

H
DRAWING NUMBER
a9812-CB24
SIZE
A
SCALE:
NONE
DATE:
11-22-96
APPROVED BY:
PACE
CHECKED BY:
MSM
DRAWN BY:
EMB
FIGURE NUMBER
9812-880-CB24

SMITH® JAY R. SMITH MFG. CO.®
 MEMBER OF MORRIS GROUP INTERNATIONAL
 POST OFFICE BOX 3237
 MONTGOMERY, ALABAMA 36109-0237 (USA)
 TEL: 334-277-8520 FAX: 334-272-7396 www.jrsmith.com

ASPE
 MEMBER OF:

NDI
 INSTITUTE

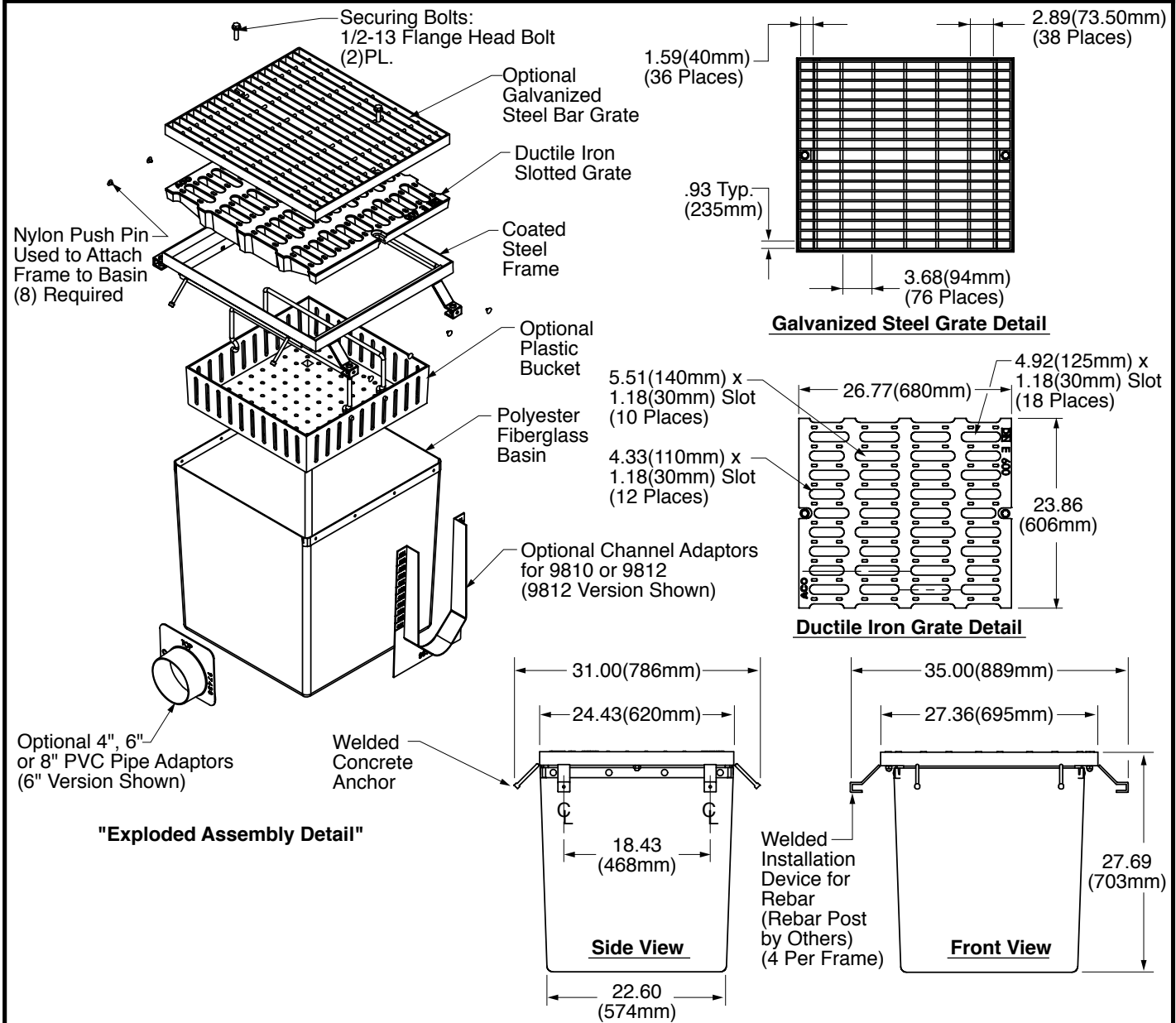
ASPE
 MEMBER OF:

LOCATION

FIBERGLASS CATCH BASIN

WE CAN ASSUME NO RESPONSIBILITY FOR USE OF SUPERSEDED OR VOID DATA

DIMENSIONS ARE SUBJECT TO MANUFACTURERS TOLERANCE AND CHANGE WITHOUT NOTICE



REGULARLY FURNISHED:
 Polyester Resin Fiberglass Catch Basin
 Duco Coated Steel Frame with
 Integral Installation Brackets and Secured
 Ductile Iron Slotted Grate (Load Class E)

- VARIATIONS:**
- Galvanized Steel Frame
 - Galvanized Steel Bar Grate
 - Stainless Steel Bar Grate
 - Stainless Steel Frame
 - Plastic Trash Bucket
 - 4" PVC Sch. 40 Pipe Adaptor
 - 6" PVC Sch. 40 Pipe Adaptor
 - 8" PVC Sch. 40 Pipe Adaptor
 - 9810 Channel/Catch Basin Adaptor
 - 9812 Channel/Catch Basin Adaptor



REV.	DATE	DESCRIPTION	BY	CKD. BY	WEIGHT POUNDS	VOLUME CUBIC FEET	FIGURE NUMBER
H	1-30-14	Deleted Vinylester Material	TBW	PJ			9812-880-CB24
G	8-18-04	Revised Dwg	TBW	PJ			
F	9-5-02	Added New ACO Logo	RN	PJ			
E	3-16-01	Revised Dwg	RN	PJ			