

D

SMITH® JAY R. SMITH MFG. CO.®
 MEMBER OF MORRIS GROUP INTERNATIONAL
 POST OFFICE BOX 3237
 MONTGOMERY, ALABAMA 36109-0237 (USA)
 TEL: 334-277-8520 FAX: 334-272-7396 www.jrsmith.com



LOCATION

DRAWING NUMBER
8905 Series

SIZE
A

SCALE:
NONE

DATE:
12-4-87

APPROVED BY:
SJM

CHECKED BY:
TD

DRAWN BY:
VGD

8905 Series

WE CAN ASSUME NO RESPONSIBILITY FOR USE OF SUPERSEDED OR VOID DATA

DIMENSIONS ARE SUBJECT TO MANUFACTURERS TOLERANCE AND CHANGE WITHOUT NOTICE

RICE INTERCEPTOR

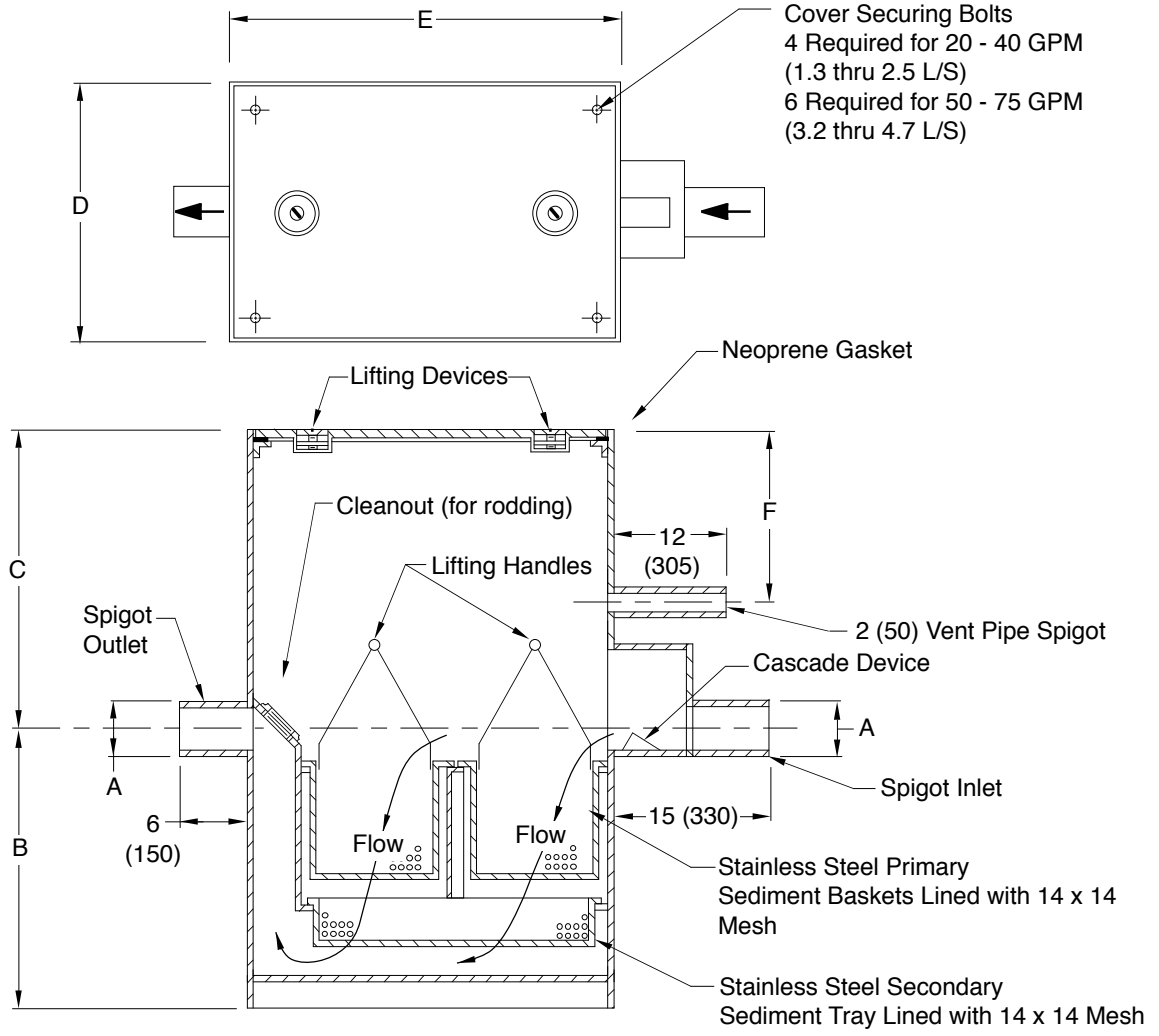


Fig. No.	Flow Rate		Inlet & Outlet (Pipe Size)	Roughing Dimensions				
	GPM	L/S		A	B	C	Width D	Length E
8905-20	20	1.3	03 (80)	24 (610)	16 (405)	20 (510)	26 (660)	7 (180)
8905-30	30	1.9	04 (100)	24 (610)	16 (405)	20 (510)	33 (840)	7 (180)
8905-40	40	2.5	04 (100)	30 (760)	22 (560)	24 (610)	36 (915)	7 (180)
8905-50	50	3.2	04 (100)	32 (815)	24 (610)	30 (760)	42 (1065)	7 (180)
8905-75	75	4.7	06 (150)	36 (915)	28 (710)	36 (915)	48 (1220)	7 (180)

REGULARLY FURNISHED:
 Fabricated Steel with Gray Duco Coating,
 Complete with Stainless Steel Primary Sediment Baskets, Stainless Steel Secondary Sediment Tray, Spigot Inlet and Outlet and Secured Gasketed Cover with Lifting Devices.

VARIATIONS:
 All Stainless Steel Unit -SS
 T Threaded Inlet and Outlet Connections

NOTE: Dimensions shown in parentheses are in millimeters.

REV.	DATE	DESCRIPTION	BY	CKD. BY
D	10-23-97	Added 14 x 14 Mesh	EMB	BS
C	9-23-96	Rev Dwg	EMB	BS
B	5-23-95	Submittal Update	EMB	BS
A	5-2-94	Changed Dim	TBW	BW

WEIGHT
POUNDS

VOLUME
CUBIC FEET

FIGURE NUMBER
8905 Series