

METAL LATH ACCESS DOORS

DRAWING NUMBER
S4771

SIZE
A

SCALE:
NONE

DATE:
3-10-15

APPROVED BY:
SJM

CHECKED BY:
JM

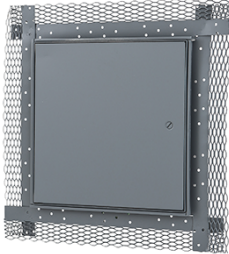
DRAWN BY:
TBW

4771

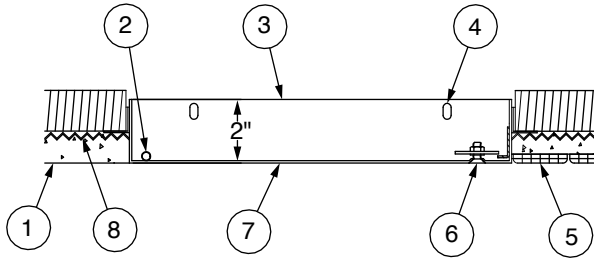
FIGURE NUMBER

WE CAN ASSUME NO RESPONSIBILITY FOR USE OF SUPERSEDED OR VOID DATA

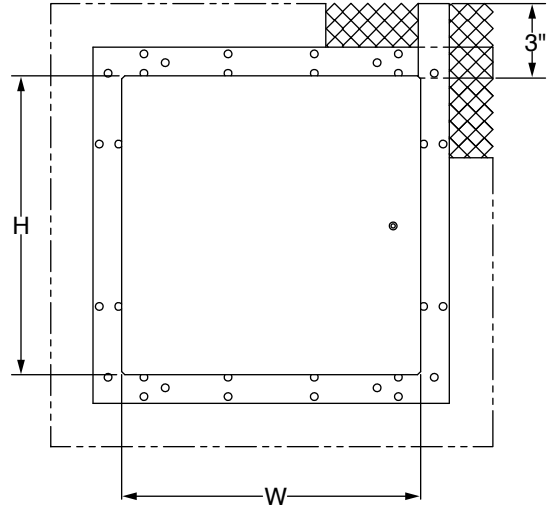
DIMENSIONS ARE SUBJECT TO MANUFACTURERS TOLERANCE AND CHANGE WITHOUT NOTICE



- ① Finish line, plaster over masonry
- ② Concealed pivoting rod hinge
- ③ Frame
- ④ Mounting holes
- ⑤ Ceramic tile over plaster
- ⑥ Screwdriver operated latch
- ⑦ Metal lath



SIDE VIEW



FRONT VIEW

REGULARLY FURNISHED:

Doors are designed specifically to meet the needs of plaster construction. Door has a 3" wide metal lath on all four sides for keying into plaster. Door and frame are fabricated from 16 gage, galvanized steel. Concealed pivoting rod hinge prevents distortion and closes door squarely. Doors 24" or larger are provided with a continuous piano hinge. Latch is screwdriver operated. Finish is a prime coat suitable for painting.

GUIDE SPECIFICATION:

Provide 4771 Series, Metal Lath Access Doors (specify options). Access door and frame shall be fabricated from 16 gage, galvanized steel with a prime coat finish. Door shall have a concealed pivoting rod hinge. Latch shall be screwdriver operated. Finish shall be a prime coat suitable for painting.

STANDARD AVAILABLE SIZES

Special sizes available upon request

	NOMINAL DOOR SIZE (W X H)	CEILING OPENING (minimum required)	LATCHES	WEIGHT
	4771 8" x 8"	8-1/4" x 8-1/4"	1	4 lbs.
	4771 8" x 12"	8-1/4" x 12-1/4"	1	5.5 lbs.
	4771 10" x 10"	10-1/4" x 10-1/4"	1	5.5 lbs.
	4771 12" x 12"	12-1/4" x 12-1/4"	1	6.5 lbs.
	4771 12" x 16"	12-1/4" x 16-1/4"	1	9 lbs.
	4771 12" x 18"	12-1/4" x 18-1/4"	1	10 lbs.
	4771 12" x 24"	12-1/4" x 24-1/4"	2	11.5 lbs.
	4771 14" x 14"	14-1/4" x 14-1/4"	2	8 lbs.
	4771 16" x 16"	16-1/4" x 16 1/4"	2	11 lbs.
	4771 16" x 20"	16-1/4" x 20-1/4"	2	12.5 lbs.
	4771 18" x 18"	18-1/4" x 18-1/4"	2	13 lbs.
	4771 18" x 24"	18-1/4" x 24-1/4"	2	20 lbs.
	4771 20" x 24"	20-1/4" x 24-1/4"	2	22 lbs.
	4771 20" x 30"	20-1/4" x 30-1/4"	3	23.5 lbs.
	4771 24" x 24"	24-1/4" x 24-1/4"	3	21 lbs.
	4771 24" x 30"	24-1/4" x 30-1/4"	3	24.5 lbs.
	4771 24" x 36"	24-1/4" x 36-1/4"	3	29.5 lbs.
	4771 30" x 30"	30-1/4" x 30-1/4"	3	25.5 lbs.
	4771 36" x 36"	36-1/4" x 36-1/4"	3	28 lbs.

VARIATIONS:

- Allen Key Latch -AKL
- Cylinder Lock (one per door) -CL
- Stainless Steel Construction -SS
Type 304 No. 4 Satin Finish

REV.	DATE	DESCRIPTION	BY	CKD. BY

WEIGHT POUNDS	VOLUME CUBIC FEET

FIGURE NUMBER 4771
