

A



JAY R. SMITH MFG. CO.
 MEMBER OF MORRIS GROUP INTERNATIONAL
 POST OFFICE BOX 3237
 MONTGOMERY, ALABAMA 36109-0237 (USA)
 TEL: 334-277-8520 FAX: 334-272-7396 www.jrsmith.com



MEMBER OF:

LOCATION

PLASTERED WALL ACCESS DOOR

DRAWING NUMBER
S4765SIZE
ASCALE:
NONEDATE:
3-9-15APPROVED BY:
SJMCHECKED BY:
JMDRAWN BY:
TBW

4765

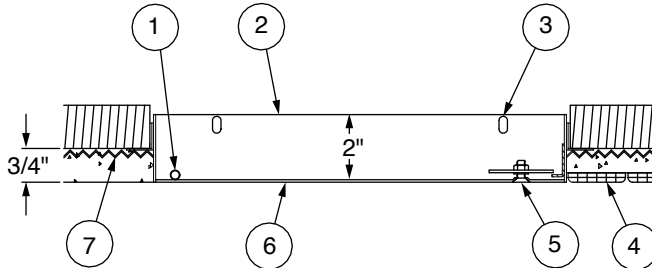
FIGURE NUMBER

WE CAN ASSUME NO RESPONSIBILITY FOR USE OF SUPERSEDED OR VOID DATA

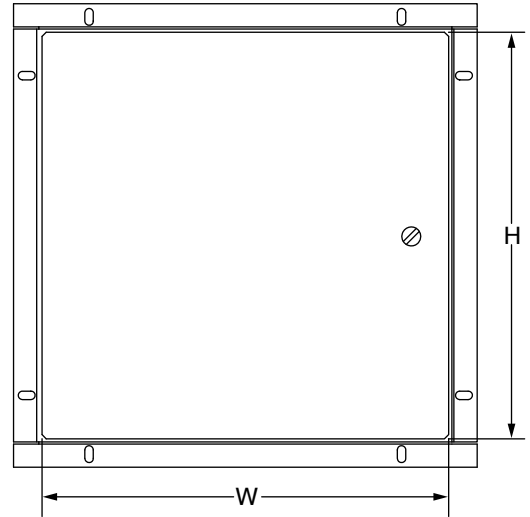
DIMENSIONS ARE SUBJECT TO MANUFACTURERS TOLERANCE AND CHANGE WITHOUT NOTICE



- ① Concealed pivoting rod hinge
- ② Frame
- ③ Mounting holes
- ④ Ceramic tile over plaster
- ⑤ Screwdriver operated latch
- ⑥ Door
- ⑦ Finish line, plaster over masonry



SIDE VIEW



FRONT VIEW

REGULARLY FURNISHED:

Doors are designed specifically to meet the needs of plaster construction. Door has 3/4" plaster ground for plaster finish. Door and frame are fabricated from 16 gage, galvanized steel with a prime coat finish. Frame has 1/4" mounting holes to facilitate installation. Concealed pivoting rod hinge prevents distortion and closes door squarely. Latch is screwdriver operated. Finish is prime coat suitable for painting.

GUIDE SPECIFICATION:

Provide 4765 Series, Plastered Wall Access Doors (specify options). Access door and frame shall be fabricated from 16 gage, galvanized steel with a prime coat finish. The door shall have a concealed pivoting rod hinge and a screwdriver operated latch. Finish shall be a prime coat suitable for painting.

STANDARD AVAILABLE SIZES

Special sizes available upon request

NOMINAL DOOR SIZE (W X H)	CEILING OPENING (minimum required)	LATCHES	WEIGHT
4765 8" x 8"	8-1/4" x 8-1/4"	1	3.5 lbs.
4765 8" x 12"	8-1/4" x 12-1/4"	1	5 lbs.
4765 10" x 10"	10-1/4" x 10-1/4"	1	5.5 lbs.
4765 12" x 12"	12-1/4" x 12-1/4"	1	6 lbs.
4765 12" x 16"	12-1/4" x 16-1/4"	1	7.5 lbs.
4765 12" x 18"	12-1/4" x 18-1/4"	1	8.5 lbs.
4765 12" x 24"	12-1/4" x 24-1/4"	3	12 lbs.
4765 14" x 14"	14-1/4" x 14-1/4"	2	7.5 lbs.
4765 16" x 16"	16-1/4" x 16 1/4"	2	9.5 lbs.
4765 16" x 20"	16-1/4" x 20-1/4"	2	12 lbs.
4765 18" x 18"	18-1/4" x 18-1/4"	2	11 lbs.
4765 18" x 24"	18-1/4" x 24-1/4"	3	17.5 lbs.
4765 20" x 24"	20-1/4" x 24-1/4"	3	21 lbs.
4765 20" x 30"	20-1/4" x 30-1/4"	3	22 lbs.
4765 24" x 24"	24-1/4" x 24-1/4"	3	20 lbs.
4765 24" x 30"	24-1/4" x 30-1/4"	3	23.5 lbs.
4765 24" x 36"	24-1/4" x 36-1/4"	3	27 lbs.
4765 30" x 30"	30-1/4" x 30-1/4"	3	30 lbs.
4765 36" x 36"	36-1/4" x 36-1/4"	3	38 lbs.

VARIATIONS:

- Allen Key Latch -AKL
- Cylinder Lock (one per door) -CL
- Stainless Steel Construction (See Fig. 4767)

REV.	DATE	DESCRIPTION	BY	CKD. BY
A	7-29-15	Revised Variations	TBW	JM

WEIGHT POUNDS	VOLUME CUBIC FEET
---------------	-------------------

FIGURE NUMBER

4765



WARNING: Cancer and Reproductive Harm - www.P65Warnings.ca.gov