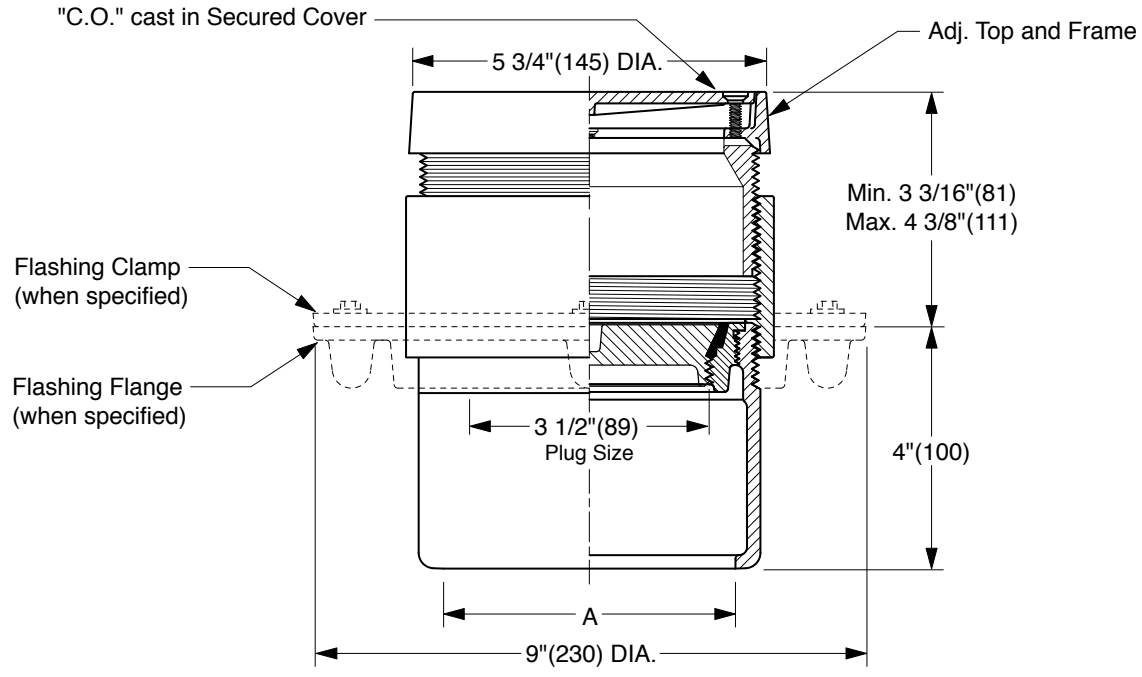


FINISHED FLOOR CLEANOUTS WITH "TWIS-TO-FLOOR®" ADJUSTABLE TOPS

ROUND NICKEL BRONZE TOP

FUNCTION: For use in finished floors bearing foot and medium load wheeled traffic. Allows for easy floor level adjustment.



NOTE: For applications using core drilling, the largest diameter of the cleanout assembly is 6 5/16" (160).

"A" (Pipe Size) = 02(50), 03(75) or 04(100)

- Fig. 4025C.....Gasket Seal - ABS Plug
- Fig. 4026C.....Gasket Seal - Bronze Plug
- Fig. 4028C.....Taper Thread - Bronze Plug
- Fig. 4029C.....Taper Thread - ABS Plug

(Twis-to-Floor® design shown with gasketed plug.)

NOTE: Dimensions shown in parentheses are in millimeters.

REGULARLY FURNISHED:

Duco Cast Iron Cleanout with Round Adjustable Scoriated Secured Nickel Bronze Top. Closure Plug Type as Indicated By Figure Number Selected.

VARIATIONS:

- Flashing Flange -F
- Flange with Flashing Clamp -F-C
- Carpet Clamping Type -X
- Carpet Marker Type -Y
- Vandal Proof Top -U
- Wide Flange (DX)

OPTIONAL MATERIALS:

- Galvanized Cast Iron -G
- Polished Bronze Top -PB

DRAWING NUMBER: S4025
 SIZE: A
 SCALE: NONE
 DATE: 2-16-70
 APPROVED BY: JM
 CHECKED BY: BH
 DRAWN BY: RK
4025 SERIES
 DIMENSIONS ARE SUBJECT TO MANUFACTURERS TOLERANCE AND CHANGE WITHOUT NOTICE

M	10-18-17	Revised Variations	TBW	CL	WEIGHT	VOLUME	FIGURE NUMBER
L	12-18-08	Revised Variations	RN	BW	POUNDS	CUBIC FEET	4025 SERIES
K	12/17/04	Added Core-Drilling Note	JJ	CL			
J	07/26/02	Corrected Clamp & Flange view	JJ	CL			
REV.	DATE	DESCRIPTION	BY	CKD. BY			