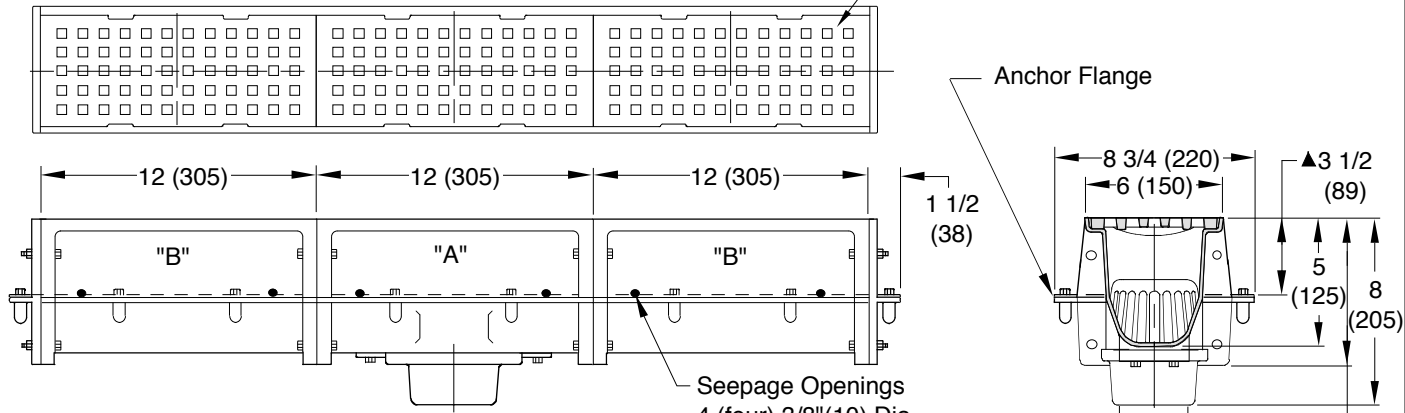


NARROW HEAVY DUTY TRENCH DRAINS

HEAVY DUTY MODULAR TRENCH DRAINS

FUNCTION: Used in ramps, loading areas and as a continuous perimeter drain.

FREE AREA
16 SQ IN
(103) SQ CM
In Each Section



Illustrated Above: (B-A-B) (Fig. 2812C)
"A" Section Only (Fig. 2810C)

Seepage Openings
4 (four) 3/8"(10) Dia.
Holes (2) on Each
Side of Body (when
specified)

▲ Add 3/4" (19) when bronze or nickel bronze top is specified.

A(Pipe Size) = 02(50), 03(75) or 04"(100)

- FIG. 2810C..... CAULK OUTLET
- FIG. 2810Y..... NO-HUB OUTLET

- FIG. 2810 "A" Section
- FIG. 2811 "A" Section with (1) "B" Section
- FIG. 2812 "A" Section with (2) "B" Section
- FIG. 2813 "A" Section with (3) "B" Section
- FIG. 2814 "A" Section with (4) "B" Section
- FIG. 2815 "A" Section with (5) "B" Section
- FIG. 2816 "A" Section with (6) "B" Section
- FIG. 2817 "A" Section with (7) "B" Section
- FIG. 2818 "A" Section with (8) "B" Section
- FIG. 2819 "A" Section with (9) "B" Section
- FIG. 2820 "A" Section with (10) "B" Section

NOTE: Last digit of figure number designates number of "B" sections.

NOTE: Any figure number other than the 2810 and 2811 must be furnished with sectional layout when placing order, to insure proper assembly at job site.

REGULARLY FURNISHED:
Ducto Cast Iron Flanged Body and End Plates with Cast Iron Anti-Shift Loose Set Square Hole Grate, Dome Bottom Strainer.

- VARIATIONS:**
- Flashing Clamp -C
 - Slotted Cast Iron Grate -SG
Free Area = 21.5 SQ IN
(139) SQ CM
 - Vandal Proof -U
 - Quad Close Trap Seal
(Specify Fig. 2692)

- OPTIONAL MATERIALS:**
- Ductile Iron Grates -M
 - Galvanized Cast Iron -G
 - Nickel Bronze Top -NB
 - Polished Bronze Top -PB

NOTE: Dimensions shown in parentheses are in millimeters.

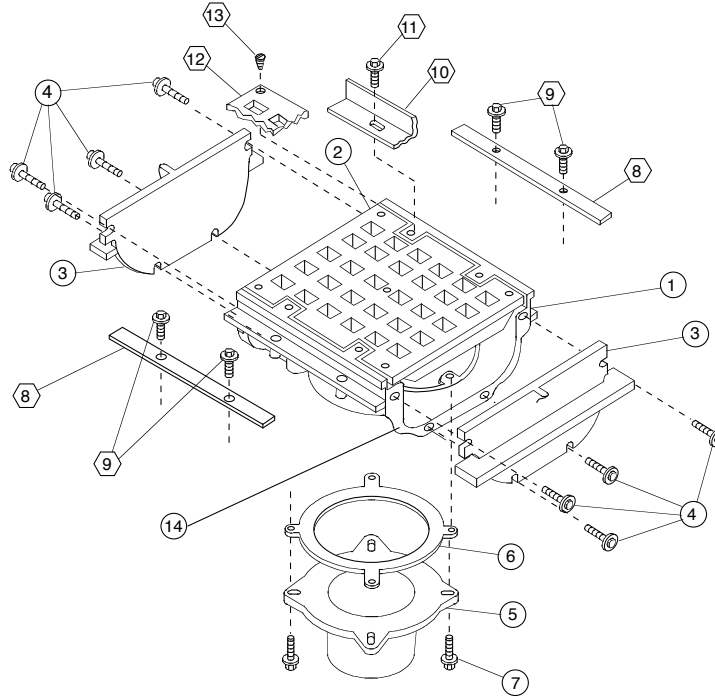
DRAWING NUMBER S2810 Series
SIZE A
SCALE: NONE
DATE: 12-19-96
APPROVED BY: BS
CHECKED BY: WMS
DRAWN BY: EMB
2810 Series
FIGURE NUMBER

WE CAN ASSUME NO RESPONSIBILITY FOR USE OF SUPERSEDED OR VOID DATA

DIMENSIONS ARE SUBJECT TO MANUFACTURERS TOLERANCE AND CHANGE WITHOUT NOTICE

REV.	DATE	DESCRIPTION	BY	CKD. BY	WEIGHT POUNDS	VOLUME CUBIC FEET	FIGURE NUMBER 2810 Series
D	9-24-15	Removed Note	TBW	CL			
C	7-16-15	Revised Variations	TBW	CL			
B	4-1-14	Revised Text, Variations	TBW	CL			
A	08/15/02	Removed -F Variation	JJ	CL			

ASSEMBLY DRAWING



- NOTES:**
- Numbers designated thus are regularly furnished parts.
 - ⬡ Numbers designated thus are variations/options and must be specified.

* Quantities are per section.

NO.	DESCRIPTION	QU.*	NO.	DESCRIPTION	QU.*
①	Flanged Body (Specify)	1	⑧	Flashing Flange	4
②	Grate	1	⑨	5/16(8)-18 x 3/4(19) Bolt with Washer	8
③	Flanged End Plates	2	⑩	Body Veneer	1
④	5/16(8)-18 x 1 3/4(44) Bolts/Nuts & Washer	8	⑪	5/16(8)-18 x 3/4(19) Bolt with Washer	4
⑤	Hub (Specify Size)	1	⑫	Grate Veneer	1
⑥	Gasket	1	⑬	10-24 x 7/16(11) Flat Head Screws	5
⑦	5/16(8)-18 x 1 1/4(32) Bolt & Washer	4	⑭	Apply Permatex #2 Seal to each end of each body section	2

DRAWING NUMBER
S2810BS

SIZE
A

SCALE:
NONE

DATE:
4-8-08

APPROVED BY:
AM

CHECKED BY:
AM

DRAWN BY:
TBW

FIGURE NUMBER
2810

Assembly Drawing

WE CAN ASSUME NO RESPONSIBILITY FOR USE OF SUPERSEDED OR VOID DATA

DIMENSIONS ARE SUBJECT TO MANUFACTURERS TOLERANCE AND CHANGE WITHOUT NOTICE

REV.	DATE	DESCRIPTION	BY	CKD. BY	WEIGHT POUNDS	VOLUME CUBIC FEET	FIGURE NUMBER 2810 Assembly Drawing
------	------	-------------	----	---------	---------------	-------------------	--