

N

SMITH® JAY R. SMITH MFG. CO.®
 MEMBER OF MORRIS GROUP INTERNATIONAL
 POST OFFICE BOX 3237
 MONTGOMERY, ALABAMA 36109-0237 (USA)
 TEL: 334-277-8520 FAX: 334-272-7396 www.jrsmith.com



LOCATION

DRAWING NUMBER
S2710

SCALE:
NONE

DATE:
11-6-89

APPROVED BY:
McD

CHECKED BY:
SB

DRAWN BY:
EMB

FIGURE NUMBER
2710 Series

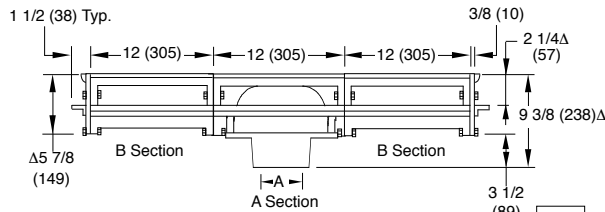
WE CAN ASSUME NO RESPONSIBILITY FOR USE OF SUPERSEDED OR VOID DATA

WIDE HEAVY DUTY TRENCH DRAINS

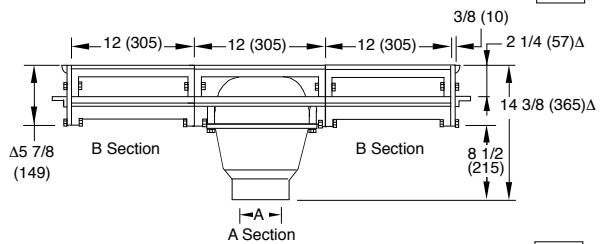
HEAVY DUTY MODULAR TRENCH DRAINS

FUNCTION: Used as a ramp drain in loading or parking areas where a wide continuous trench drain is required to handle moderate traffic loads and serve as a reservoir for large water runoff. Can also be used individually as an area drain (A Section Only).

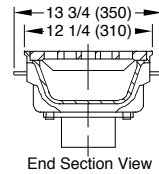
Free Area
39.3 SQ IN
(254)SQ CM
(Each Section)



A (Pipe Size) = 03(75), 04(100), 05(125), 06(150) or 08(200)

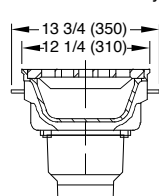


A (Pipe Size) = 03(75), 04(100), 05(125), 06(150) or 08(200)



End Section View

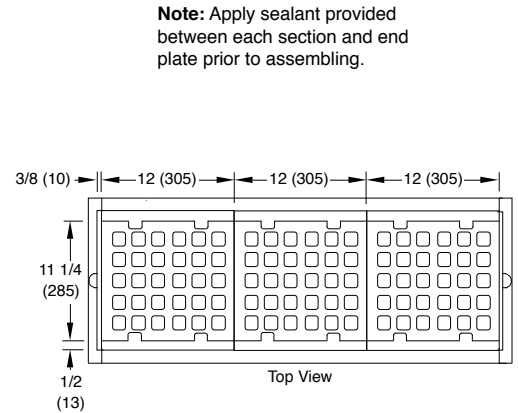
- FIG. 2710C CAULK OUTLET
- FIG. 2710Y NO-HUB OUTLET



End Section View

- FIG. 2710C (-DH) CAULK OUTLET
- FIG. 2710Y (-DH) NO-HUB OUTLET

Deep Hub Body



Top View

Note: Apply sealant provided between each section and end plate prior to assembling.

Assembly ordering Information:

A and B sections are both 12"(305) long. A section is the outlet section and available in the standard hub or deep outlet hub (-DH). B section is the extension section. It is recommended that no more than 5, 12"(305) extension sections on each side of the A outlet section be used. Each section is 12" (305) long and end plates are 1 1/2"(38) thick including flange. In determining overall length, multiply 12" (305) x no. of sections and add 3"(76) (thickness of the two end plates).

REGULARLY FURNISHED:

Duco Cast Iron Flanged Body
Outlet Section A and Flanged End Plate with Cast Iron Anti-Shift Loose Set Square Hole Grate.

Δ Add 1 1/4" (32) when Bronze Top is specified.

Note: B sections are shown above with the A section for illustrative purposes only. Only the A section is regularly furnished and additional B sections must be specified as determined by figure number.

VARIATIONS:

- Backwater Valve -V 02(50) -04"(100) (Deep Hub Body Only)
- Deep Hub -DH, Not Available in 08"(200)
- Dome Bottom Strainer -DBS
- Flashing Clamp -C
- Sediment Bucket -B (Deep Hub Body only)
- Vandal Proof Grate -U
- Quad Close Trap Seal (Specify Fig. 2692)

OPTIONAL MATERIALS:

- Ductile Iron Grate -M
- Galvanized Cast Iron -G
- Nickel Bronze Top -NB
- Polished Bronze Top -PB

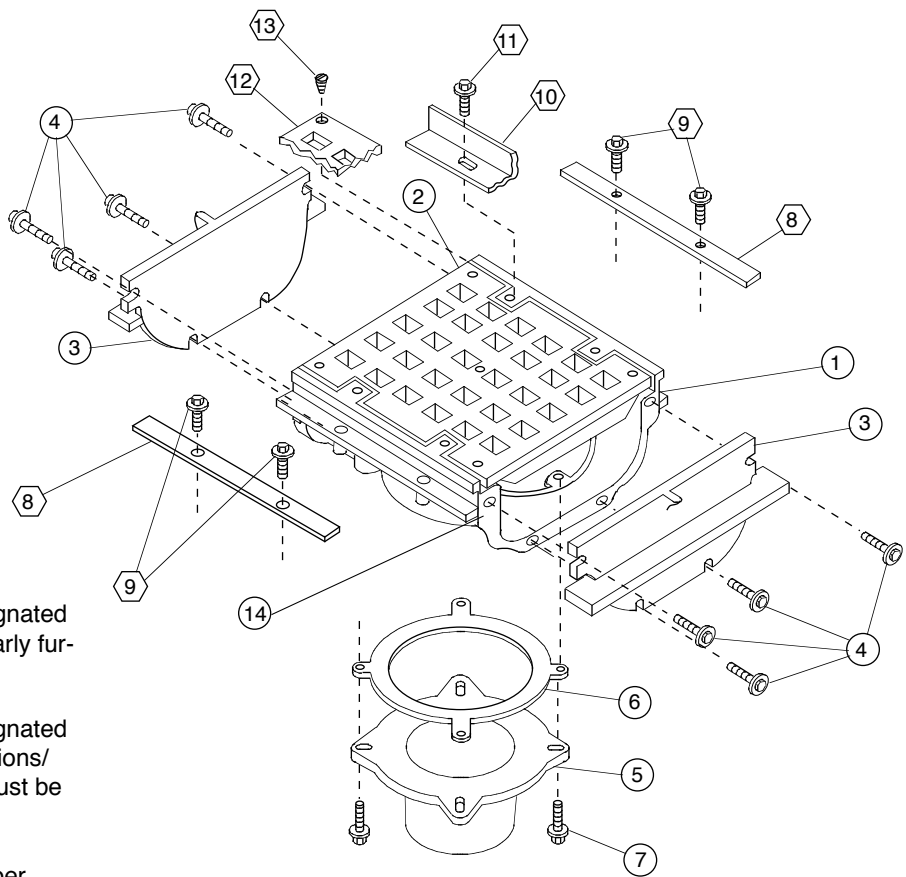
NOTE: Dimensions shown in parentheses are in millimeters.

NOTE: Last digit of figure number designates number of "B" sections.

NOTE: Any figure number other than the 2710 and 2711 must be furnished with sectional layout when placing order, to insure proper assembly at job site.

REV.	DATE	DESCRIPTION	BY	CKD. BY	WEIGHT POUNDS	VOLUME CUBIC FEET	FIGURE NUMBER
N	7-14-15	Revised Variations	TBW	CL			2710 Series
M	4-1-14	Revised Text	TBW	CL			
L	6-22-04	Rev Free Area	TBW	CL			
K	11-3-97	Rev Var.	EMB	BS			

ASSEMBLY DRAWING



- NOTES:**
- Numbers designated thus are regularly furnished parts.
 - ⬡ Numbers designated thus are variations/options and must be specified.

* Quantities are per section.

NO.	DESCRIPTION	QU.*	NO.	DESCRIPTION	QU.*
①	Flanged Body (Specify)	1	⑧	Flashing Flange	4
②	Grate	1	⑨	5/16(8)-18 x 3/4(19) Bolt with Washer	8
③	Flanged End Plates	2	⑩	Body Veneer	1
④	5/16(8)-18 x 1 3/4(44) Bolts/Nuts & Washer	8	⑪	5/16(8)-18 x 3/4(19) Bolt with Washer	4
⑤	Hub (Specify Size)	1	⑫	Grate Veneer	1
⑥	Gasket	1	⑬	10-24 x 7/16(11) Flat Head Screws	5
⑦	5/16(8)-18 x 1 1/4(32) Bolt & Washer	4	⑭	Apply Permatex #2 Seal to each end of each body section	2

DRAWING NUMBER: S2710BS
 SIZE: A
 SCALE: NONE
 DATE: 3-26-90
 APPROVED BY: TD
 CHECKED BY: BS
 DRAWN BY: EMB
 2710 Assembly Drawing
 DIMENSIONS ARE SUBJECT TO MANUFACTURERS TOLERANCE AND CHANGE WITHOUT NOTICE

D	4-9-08	Revised Callouts	TBW	AM	WEIGHT	VOLUME	FIGURE NUMBER
C	11-5-97	Revised Dwg & Callouts	EMB	BS	POUNDS	CUBIC FEET	2710
B	6-19-95	Added Millimeters	EMB	BS			Assembly Drawing
A	3-91	Added Flange & Boss	EMB	JCS			
REV.	DATE	DESCRIPTION	BY	CKD. BY			