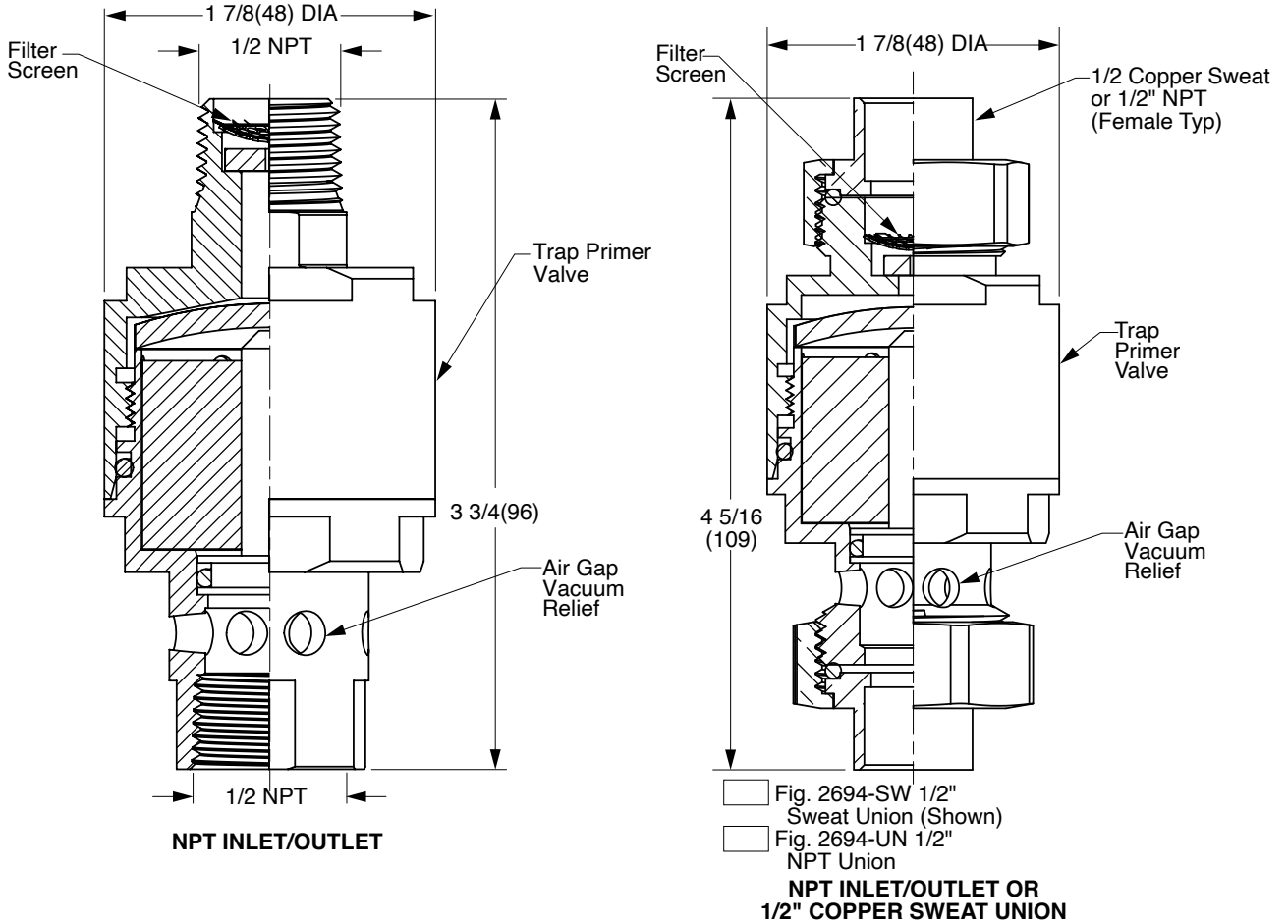


PRESSURE DROP ACTIVATED TRAP SEAL PRIMER

TRAP-DEFENDER™



REGULARLY FURNISHED:
 Lead Free Brass with 1/2"
 NPT Connections as illustrated.

DISTRIBUTION UNITS
 (See Submittals)
 Fig. 2694DA
 Fig. 2683

OPTIONAL MATERIALS:
 Nickel Plated -NP

NOTES:

- Minimum Pressure Drop 3 PSI - Reacts to positive or negative changes in water pressure
- Operating Pressure Range 20-80 PSIG (138-552 kPa)
- The Trap Seal Primer must be installed on a cold water line of 1/2"(13)-1 1/2"(38) pipe size.
- Solder Sweat Connections while Disassembled to Prevent Elastomer Damage
- Dimensions shown in parentheses are in millimeters.
- Assembled & Tested in the USA



ASSE 1018 LISTED
 SEAL NO. 143



File 3437
 ASSE 1018
 CSA B125.3

COMPLIES with LEAD
 PLUMBING LAW
 "CERTIFIED by IAPMO R & T"
 FILE NO. 8477
 (NSF/ANSI 372)

CAUTION: MUST BE LOCATED IN AN ACCESSIBLE LOCATION.
 The 2694 should not be subjected to continuous, large pressure fluctuations from pumps or other equipment that can cause such fluctuations.

PATENT NO. 9,708,808
 10,190,306

DRAWING NUMBER: s2694
 SIZE: A
 SCALE: NONE
 DATE: 3-1-17
 APPROVED BY: AS
 CHECKED BY: AS
 DRAWN BY: TBW
 FIGURE NUMBER: 2694
 DIMENSIONS ARE SUBJECT TO MANUFACTURERS TOLERANCE AND CHANGE WITHOUT NOTICE
 WE CAN ASSUME NO RESPONSIBILITY FOR USE OF SUPERSEDED OR VOID DATA

REV.	DATE	DESCRIPTION	BY	CKD. BY	WEIGHT POUNDS	VOLUME CUBIC FEET	FIGURE NUMBER
L	11-11-21	Added Reference Notes	KK	JM			2694
K	7-31-2020	Revised Notes	MW	CL			
J	5-29-2020	Revised Optional Materials	MW	CL			
H	2-24-2020	Revised Notes	MW	CL			



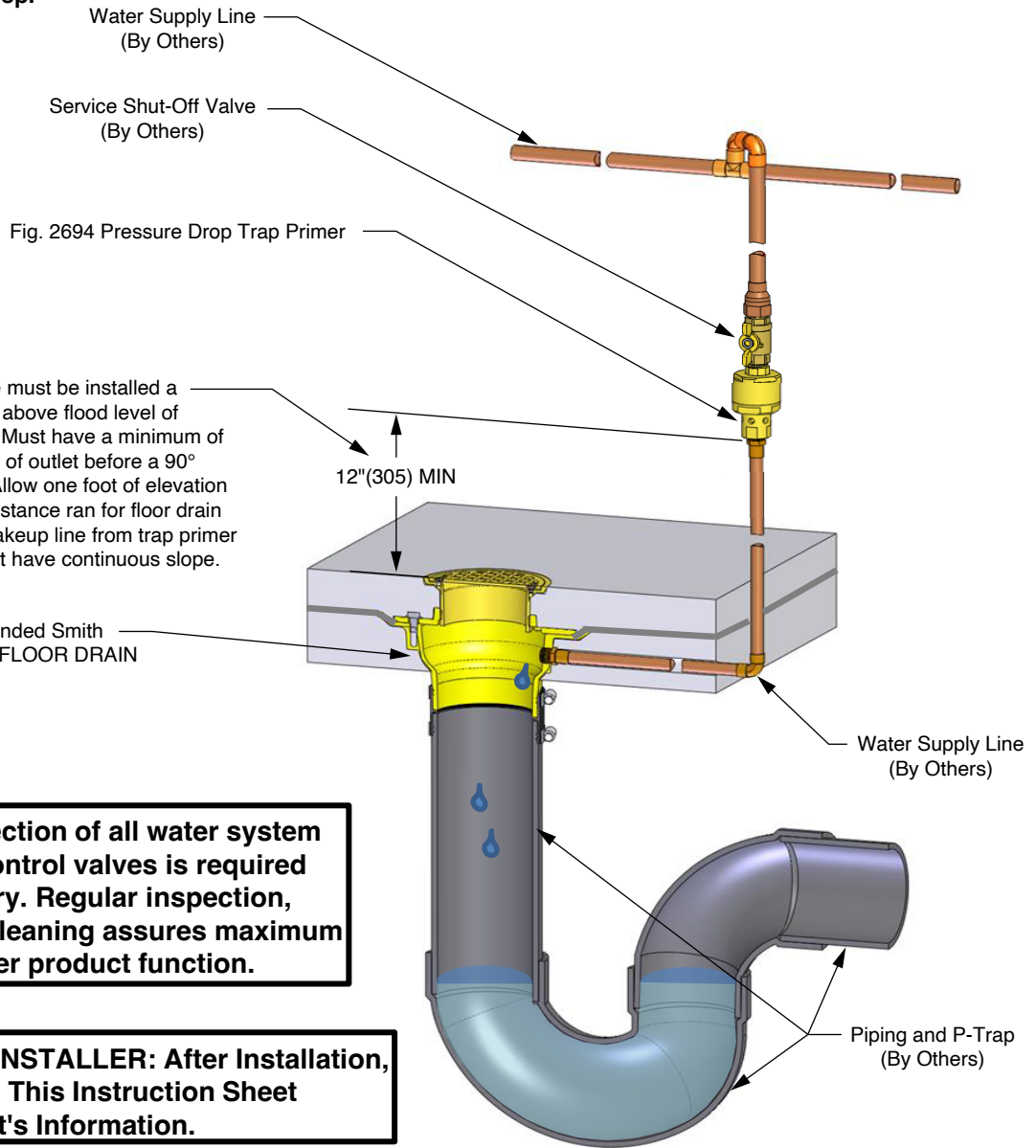
SMITH
FLUID
CONTROLS®

JAY R. SMITH MFG. CO.®
MEMBER OF MORRIS GROUP INTERNATIONAL
POST OFFICE BOX 3237
MONTGOMERY, ALABAMA 36109-0237 (USA)
TEL: 334-277-8520 FAX: 888-377-7818 www.jrsmith.com

LOCATION

INSTALLATION INSTRUCTIONS

The Fig. 2694 Trap Primer should be connected to a 1/2(13) - 1 1/2"(38) pipe size cold water line only. Do not install on a cold water line serving a drinking fountain only. These devices should be installed in the vertical position, as shown, connected to a tee on the supply line leading to a frequently used fixture or at the end of a supply line and should be accessible for servicing. Before installing Fig. 2694, it is mandatory to flush out the line to remove dirt and scale that may foul trap primer internals. The trap primer valve must be installed a minimum of 12"(305) above flood level of device being served. Must have a minimum of 12"(305) from bottom of outlet before a 90° elbow can be used. Allow one foot of elevation for every 20 feet of distance ran for floor drain make up line. The makeup line from trap primer to the floor drain must have continuous slope. Note flow arrow direction on the trap primer label. Maximum supply pressure 80 psi. Note: A 3 psi (34 kPa) pressure drop across the valve is required to activate delivery of a metered amount of water to the floor drain trap. For supply, pressures below 20 psi or above 80 psi consult factory. The Minimum discharge rate is 0.10 mL Per Pressure Drop.



The trap primer valve must be installed a minimum of 12"(305) above flood level of device being served. Must have a minimum of 12"(305) from bottom of outlet before a 90° elbow can be used. Allow one foot of elevation for every 20 feet of distance ran for floor drain make up line. The makeup line from trap primer to the floor drain must have continuous slope.

Annual inspection of all water system safety and control valves is required and necessary. Regular inspection, testing and cleaning assures maximum life and proper product function.

ATTENTION INSTALLER: After Installation, Please Leave This Instruction Sheet For Occupant's Information.

DRAWING NUMBER
S2694INST

SIZE
A

SCALE:
NONE

DATE:
5-15-18

APPROVED BY:
AS

CHECKED BY:
AS

DRAWN BY:
TBW

FIGURE NUMBER
2694INST

WE CAN ASSUME NO RESPONSIBILITY FOR USE OF SUPERSEDED OR VOID DATA

DIMENSIONS ARE SUBJECT TO MANUFACTURERS TOLERANCE AND CHANGE WITHOUT NOTICE

D	7-18-23	Changed BS to INST	HS	CL	WEIGHT POUNDS	VOLUME CUBIC FEET	FIGURE NUMBER 2694INST
C	7-31-20	Revised Instructions	MW	CL			
B	3-9-20	Revised Instructions, Dimen.	MW	CL			
A	2-24-20	Removed ASSE Code	MW	CL			
REV.	DATE	DESCRIPTION	BY	CKD. BY			