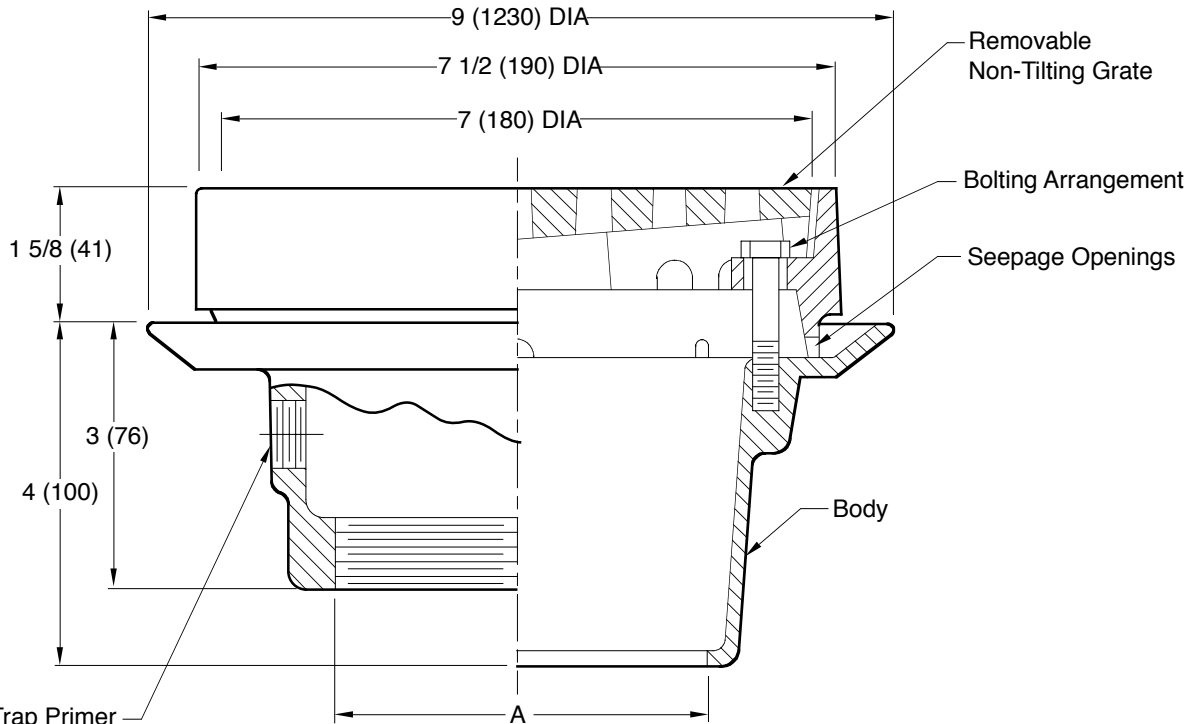


# FLOOR DRAIN

**FUNCTION:** This drain can be used for numerous general purpose applications in all types of buildings.



1/2" (13) Trap Primer Connection when Specified

A(Pipe Size) = 02(50), 03(75), or 04(100)

- Fig. 2108C . . . CAULK OUTLET
- Fig. 2108Y . . . NO-HUB OUTLET

**REGULARLY FURNISHED:**  
 Duco Cast Iron Body, Collar and Non-Tilting Slotted Grate.

- VARIATIONS:**
- Flat Bottom Strainer -FBS
  - Trap Primer Connection -P050 1/2(13), -P075 3/4(19)
  - T Threaded Outlet
  - Quad Close Trap Seal (Specify Fig. 2692)

- OPTIONAL MATERIALS:**
- All Galvanized -G

**NOTE:** Dimensions shown in parentheses are in millimeters.

DRAWING NUMBER **S2108**  
 SIZE **A**  
 SCALE: **NONE**  
 DATE: **12-16-88**  
 APPROVED BY: **TDavis**  
 CHECKED BY: **CR**  
 DRAWN BY: **WAS**  
**2108**  
 DIMENSIONS ARE SUBJECT TO MANUFACTURERS TOLERANCE AND CHANGE WITHOUT NOTICE

D	7-3-18	Revised Variations, Pipe Size mm	TBW	CL	WEIGHT POUNDS	VOLUME CUBIC FEET	FIGURE NUMBER
C	3-1-16	Revised Optional Materials	TBW	CL			<b>2108</b>
B	6-10-15	Revised Variations	TBW	CL			
A	10-23-97	Submittal Update	EMB	BS			
REV.	DATE	DESCRIPTION	BY	CKD. BY			