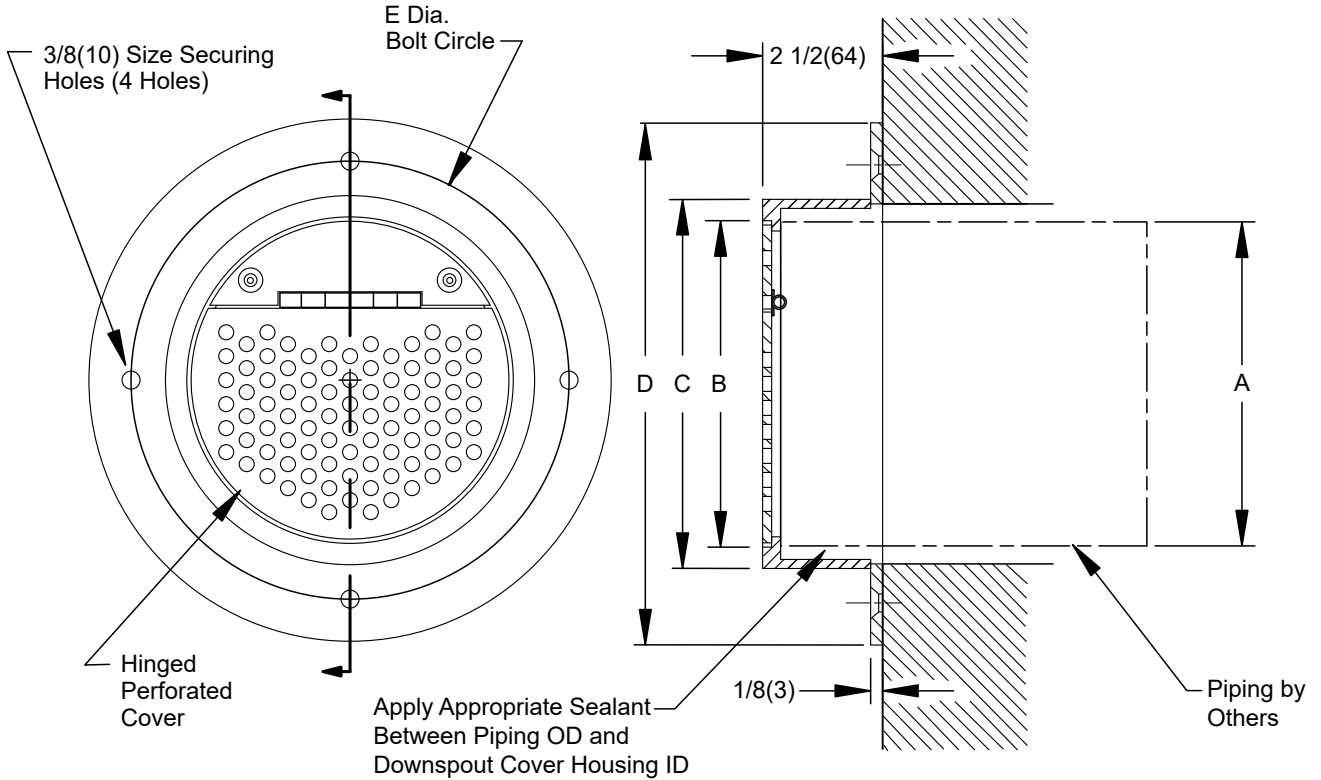


SPECIAL PURPOSE DOWNSPOUT COVER

DRAWING NUMBER **s1775**
 SIZE **A**
 SCALE: **NONE**
 DATE: **03-07-05**
 APPROVED BY: **JM**
 CHECKED BY: **JM**
 DRAWN BY: **JJ**
1775
 DIMENSIONS ARE SUBJECT TO MANUFACTURERS TOLERANCE AND CHANGE WITHOUT NOTICE
 WE CAN ASSUME NO RESPONSIBILITY FOR USE OF SUPERSEDED OR VOID DATA



FRONT VIEW

RIGHT SIDE SECTION VIEW

A (Pipe Size)	B DIA.	C DIA.	D DIA.	E DIA.
0150(38)	4(102)	4 1/2(115)	7 11/16(194)	5 15/16(151)
02(50)	4(102)	4 1/2(115)	7 11/16(194)	5 15/16(151)
03(75)	4(102)	4 1/2(115)	7 11/16(194)	5 15/16(151)
04(100)	5(127)	5 9/16(142)	8 3/4(220)	7(178)
05(125)	6 1/4(159)	6 5/8(168)	9 13/16(251)	8 1/8(206)
06(150)	7 3/16(183)	7 9/16(192)	10 7/8(278)	9 1/8(232)
08(200)	9 3/16(233)	9 9/16(242)	12 7/8(328)	11 1/8(283)
10(250)	11 5/16(287)	11 11/16(297)	15(380)	13 1/4(337)
12(305)	13 5/16(338)	13 11/16(388)	17(430)	15 1/4(387)
15(380)	16 7/16(418)	16 13/16(427)	20 1/8(513)	18 3/8(467)
16(405)	16 7/16(418)	16 13/16(427)	20 1/8(513)	18 3/8(467)
18(457)	18 9/16(471)	18 15/16(481)	22 1/4(565)	20 3/8(517)

Fig. 1775 DOWNSPOUT COVER

REGULARLY FURNISHED:
 Fabricated Type 304 Stainless Steel
 Downspout Cover with Hinged Perforated
 Cover.

VARIATIONS:
 Vandal Proof -U

OPTIONAL MATERIALS:
 Fabricated Polished Brass -PB
 Fabricated Chrome Plated Brass -CP

NOTE: Dimensions shown in parentheses are in millimeters.

K	8-30-23	Revised Table	HS	CL	WEIGHT	VOLUME	FIGURE NUMBER
J	10-11-22	Edited Drawing	KK	CL	POUNDS	CUBIC FEET	1775
H	2-11-21	Removed Function	KB	AM			
G	1-5-18	Revised Drawing, Dimension	TBW	CL			
REV.	DATE	DESCRIPTION	BY	CKD. BY			