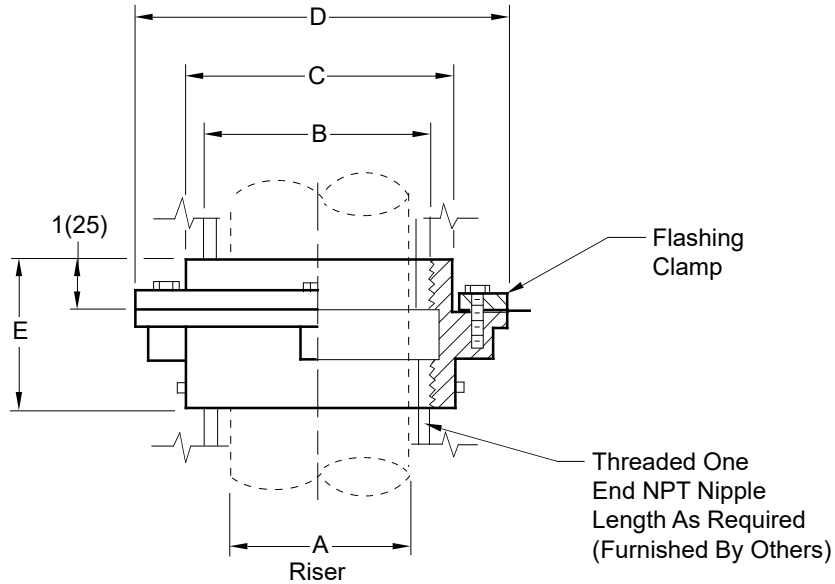


# ROOF ACCESSORY

## RISER SLEEVE ADAPTOR



□ Fig. 1760T

|                |            |            |            |            |            |             |             |
|----------------|------------|------------|------------|------------|------------|-------------|-------------|
| <b>A=RISER</b> | 0150(40)   | 02(50)     | 0250(65)   | 03(75)     | 04(100)    | 05(125)     | 06(150)     |
| <b>B=SIZE</b>  | 2 1/2(64)  | 3(76)      | 4(100)     | 4(100)     | 5(125)     | 6(150)      | 8(205)      |
| <b>C=DIA</b>   | 4(100)     | 4(100)     | 5(125)     | 5(125)     | 6 1/2(165) | 7 1/2(190)  | 10(255)     |
| <b>D=DIA</b>   | 6 1/2(165) | 6 1/2(165) | 7 1/4(185) | 7 1/4(185) | 9 1/4(235) | 10 1/4(260) | 13 1/2(345) |
| <b>E</b>       | 3(76)      | 3(76)      | 3(76)      | 3(76)      | 3 1/2(89)  | 3 3/4(95)   | 4(100)      |

ALWAYS SPECIFY (A - RISER) SIZE

**REGULARLY FURNISHED:**  
 Duco Cast Iron Body with Flashing Clamp.

□ **OPTIONAL MATERIALS:**  
 Galvanized Cast Iron -G

**NOTE:** Dimensions shown in parentheses are in millimeters.

DRAWING NUMBER **S1760**  
 SIZE **A**  
 SCALE: **NONE**  
 DATE: **5-24-85**  
 APPROVED BY: **TD**  
 CHECKED BY: **TD**  
 DRAWN BY: **CR**  
 DIMENSIONS ARE SUBJECT TO MANUFACTURERS TOLERANCE AND CHANGE WITHOUT NOTICE  
 WE CAN ASSUME NO RESPONSIBILITY FOR USE OF SUPERSEDED OR VOID DATA  
 FIGURE NUMBER **1760**

|      |      |   |            |          |               |                   |                                     |
|------|------|---|------------|----------|---------------|-------------------|-------------------------------------|
| REV. | DATE | DESCRIPTION   | BY         | CKD. BY  | WEIGHT POUNDS | VOLUME CUBIC FEET | <b>FIGURE NUMBER</b><br><b>1760</b> |
|      |      | Removed Function Added Millimeters Submittal Update | HS CMD EMB | CL BS BS |               |                   |                                     |