

R
DRAWING NUMBER S1450
SIZE A
SCALE: NONE
DATE: 5-24-85
APPROVED BY: TD
CHECKED BY: TD
DRAWN BY: PJ
FIGURE NUMBER 1450, 1460

SMITH® JAY R. SMITH MFG. CO.®
 MEMBER OF MORRIS GROUP INTERNATIONAL
 POST OFFICE BOX 3237
 MONTGOMERY, ALABAMA 36109-0237 (USA)
 TEL: 334-277-8520 FAX: 888-377-7818 www.jrsmith.com

ASPE
 MEMBER OF:

PDI
 INSTITUTE

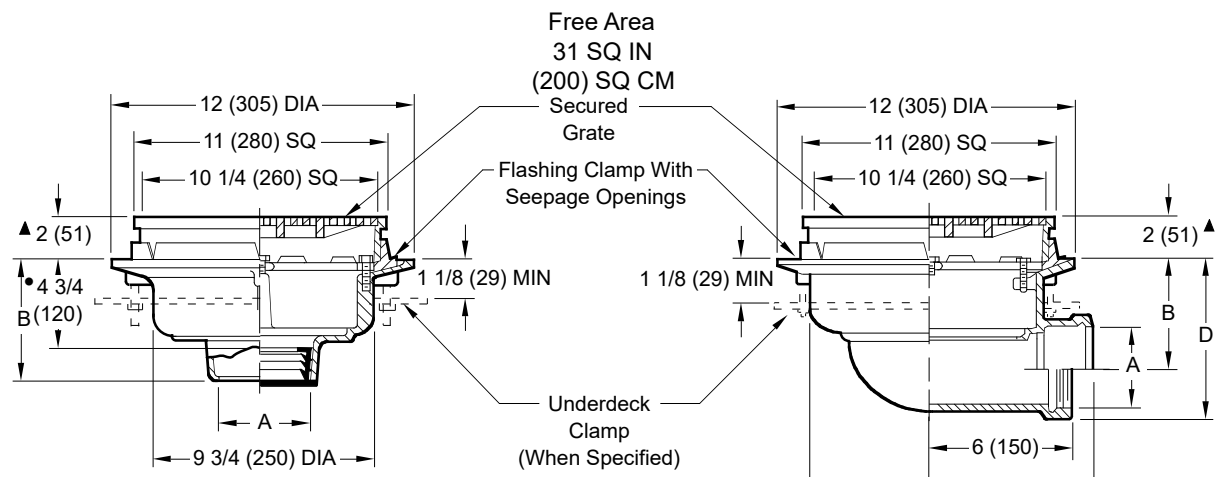
ASSE
 ASSOCIATION OF STAIR AND ESCAPE MANUFACTURERS

LOCATION

PROMENADE DECK DRAINS

MEDIUM - 11" (280) SQUARE

Load Rating: Light Duty having a Safe Live (Static) Load less than 2,000 lbs. (900 kg) per ASME A112.6.3 Floor Drain Standard. For the specific Safe Live Load rating of any grate, contact the Smith representative or factory direct.



- Fig. 1450C CAULK OUTLET
- Fig. 1450T THREADED OUTLET
- Fig. 1450Y NO-HUB OUTLET

- Fig. 1460C CAULK OUTLET
- Fig. 1460T THREADED OUTLET

A SIZE	02 (50)	03 (75)	04 (100)	05 (125)	06 (150)
B	6 (150) for Caulk, NO-HUB and Speedi-Set® 4 3/4 (120) for Threaded				

recommended deck opening

with suffix -R	13 (330) DIA
less Suffix -R	11 (279) DIA

A SIZE	02 (50)	03 (75)	04 (100)
B	4 1/2 (115)	4 (100)	3 1/2 (89)
C	10 (254)	9 3/4 (248)	9 5/8 (244)
D	6 1/2 (165)	6 5/8 (168)	6 5/8 (168)

- This Dimension to Internal Stop of Speedi-Set® Gasket.
- ▲ Add 3/16" (5) when bronze top is specified.

REGULARLY FURNISHED:
 Duco Cast Iron Body and
 Flashing Clamp with Seepage
 Openings and Secured Square
 Hole ADA Light Duty Grate.

- VARIATIONS:**
- Expansion Joint (Specify Fig. 1710) (Fig. 1450 only)
 - Extension (Specify Height) -E
 - L Speedi-Set® Service Weight 02(50), 03(75) & 04"(100) sizes only (Fig. 1450 only)
 - LXH Speedi-Set® Extra Heavy 02(50), 03(75) & 04"(100) sizes only (Fig. 1450 only)
 - Underdeck Clamp -C
 - NO-HUB Adaptor (Specify Fig. 2646Y) (Fig. 1460 only)
 - Secondary Flashing Clamp -C2
 - Sump Receiver -R
 - Vandal Proof Grate -U
 - Roof Deck Plate -RDP
 - Heel Proof Grate -HP

- OPTIONAL MATERIALS:**
- Ductile Iron Grate -M
 - Galvanized Cast Iron -G
 - Nickel Bronze Top -NB
 - Polished Bronze Top -PB

NOTE: Floor drains or area drains used to drain areas subject to rainfall should have an open area equal to twice the cross sectional area of the connecting pipe.

NOTE: Dimensions shown in parentheses are in millimeters.

REV.	DATE	DESCRIPTION	BY	CKD. BY	WEIGHT POUNDS	VOLUME CUBIC FEET	FIGURE NUMBER
							1450, 1460