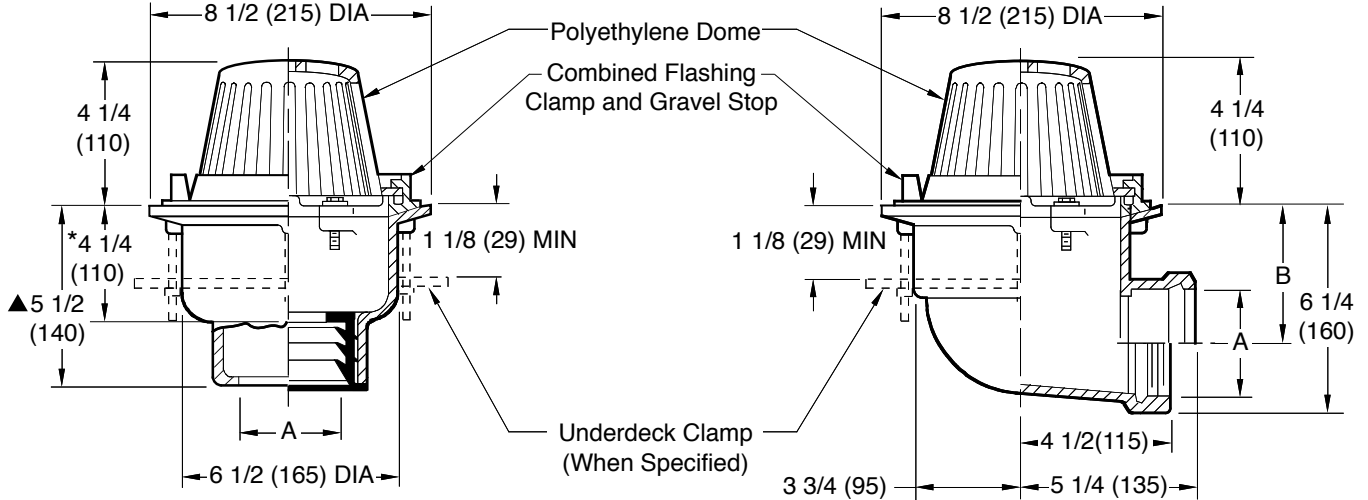


# GENERAL PURPOSE ROOF DRAINS

## 8 1/2" (215) DIAMETER - LOW PROFILE DOME

**FUNCTION:** Used in flat roofs, gutters or valleys of any construction. Small diameter pan is particularly adaptable to gutters and valleys where limited space is available. Flashing clamp holds flashing and roofing materials without puncturing. Low profile dome provides sufficient free area for quick drainage of rain water and protects the drain sump and connected piping from the intrusion of debris.

Free Area  
 41.5 SQ IN  
 (268) SQ CM



- Fig. 1330C . . . . . CAULK OUTLET
- Fig. 1330Y . . . . . NO-HUB OUTLET

\*This Dimension to Internal Stop of Speedi-Set® Gasket.  
 ▲ Same for Caulk, NO-HUB and Speedi-Set®, 4 1/4(110) for Threaded.

- Fig. 1340C . . . . . CAULK OUTLET
- Fig. 1340T . . . . . THREADED OUTLET

A (Pipe Size) = 02(50), 03(75) or 04(100)

recommended deck opening

with suffix -R	9(230) DIA
less suffix -R	7 3/4(195) DIA

A SIZE	02 (50)	03 (75)	04 (100)
B	4 1/2 (115)	4 (100)	3 1/2 (89)

**REGULARLY FURNISHED:**

Duco Cast Iron Body with Combined Flashing Clamp and Gravel Stop with Polyethylene Dome.

**VARIATIONS:**

- Expansion Joint (Specify Fig. 1710) (Fig. 1330 only)
- Extension -E (Specify Height)
- 2"(51) High Water Dam -WD
- "L" Shaped Underdeck Clamp -CL
- L Speedi-Set® Service Weight (Fig. 1330 only)
- LXH Speedi-Set® Extra Heavy (Fig. 1330 only)
- NO-HUB Adaptor (Specify Fig. 2646Y) (Fig. 1340 only)
- Secondary Flashing Clamp -C2
- Sump Receiver -R
- Underdeck Clamp -C
- Vandal Proof Dome -U
- T Threaded Outlet
- Stainless Steel Mesh Over Dome -SSM

**OPTIONAL MATERIALS:**

- Aluminum Dome -AD
- Cast Iron Dome -CID
- Galvanized Cast Iron Body & Collar -G
- Galvanized Cast Iron Dome -CIDG
- Rough Bronze Dome -RBD

**NOTE:** Dimensions shown in parentheses are in millimeters.

DRAWING NUMBER S1330  
 SIZE A  
 SCALE: NONE  
 DATE: 5-24-85  
 APPROVED BY: TD  
 CHECKED BY: TD  
 DRAWN BY: TD  
 1330, 1340  
 DIMENSIONS ARE SUBJECT TO MANUFACTURERS TOLERANCE AND CHANGE WITHOUT NOTICE

L	3-8-23	Added @ to "Speedi-Set"	KK	CL	WEIGHT POUNDS	VOLUME CUBIC FEET	FIGURE NUMBER <b>1330, 1340</b>
K	6-3-22	Updated Variations	KK	CL			
J	7-30-19	Removed NOTE	MW	CL			
H	11-13-15	Added Flow Rate Note	TBW	BW			
REV.	DATE	DESCRIPTION	BY	CKD. BY			