

SMITH® JAY R. SMITH MFG. CO.®
 MEMBER OF MORRIS GROUP INTERNATIONAL
 POST OFFICE BOX 3237
 MONTGOMERY, ALABAMA 36109-0237 (USA)
 TEL: 334-277-8520 FAX: 334-272-7396 www.jrsmith.com

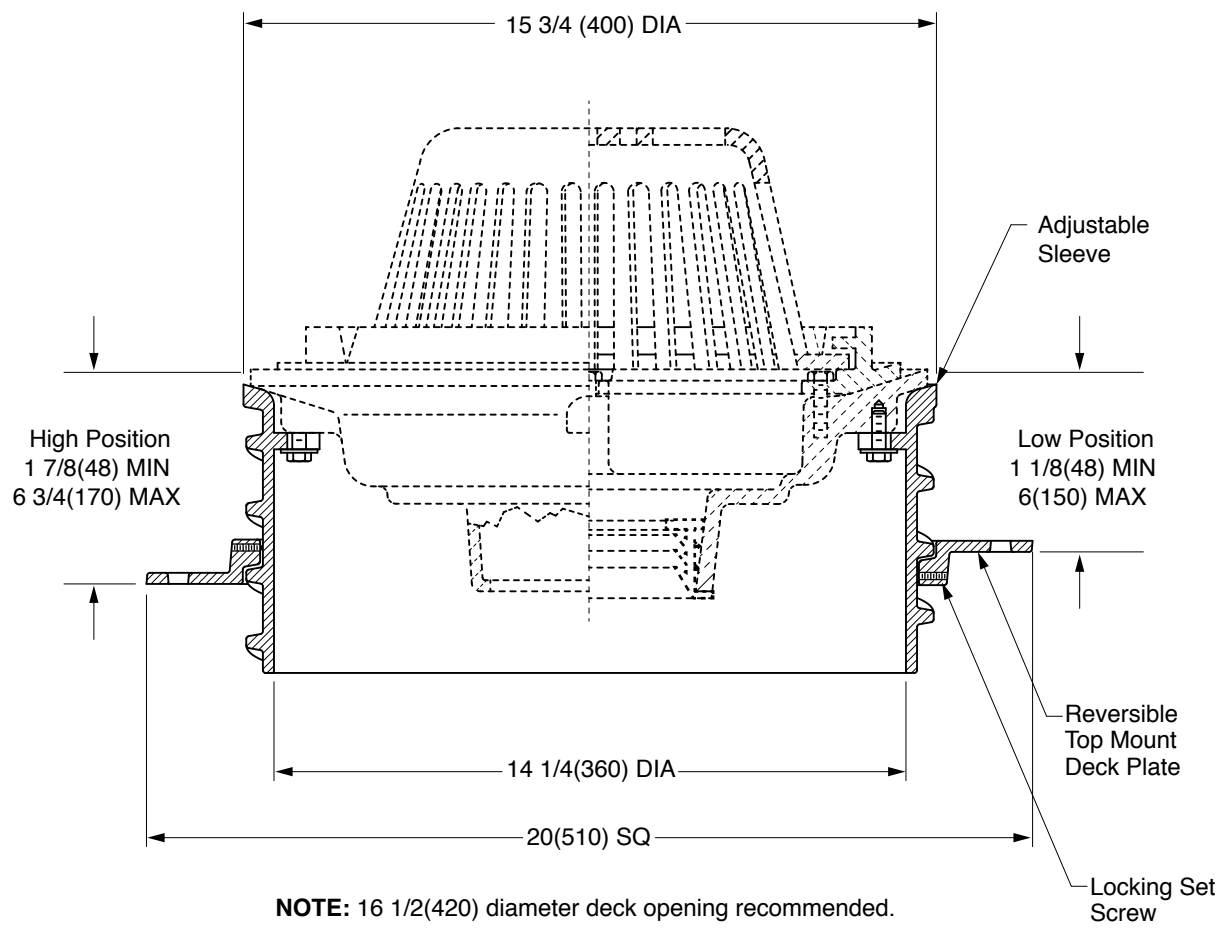


LOCATION

A
 DRAWING NUMBER s1010DEK
 SIZE A
 SCALE: NONE
 DATE: 6-22-06
 APPROVED BY: CEL
 CHECKED BY: CL
 DRAWN BY: RN
1010DEK
 DIMENSIONS ARE SUBJECT TO MANUFACTURERS TOLERANCE AND CHANGE WITHOUT NOTICE
 WE CAN ASSUME NO RESPONSIBILITY FOR USE OF SUPERSEDED OR VOID DATA

TOP MOUNT DRAIN ELEVATOR

FUNCTION: Used to elevate the figure 1010 type roof drains on top side of roof deck to compensate for insulation thickness.



REGULARLY FURNISHED:
 Duco Coated Cast Iron Adjustable Sleeve and Top Mount Reversible Deck Plate.

OPTIONAL MATERIALS:
 Galvanized Cast Iron -G

NOTE: Dimensions shown in parentheses are in millimeters.

FIGURE NUMBER	A	3-8-17	Revised Drawing	TBW	AM	WEIGHT POUNDS	VOLUME CUBIC FEET	FIGURE NUMBER
REV.	DATE	DESCRIPTION	BY	CKD.				1010DEK