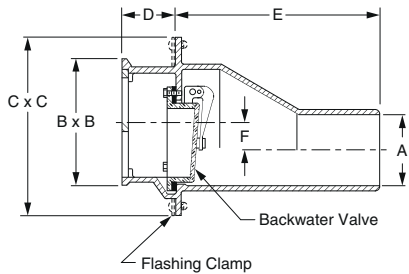
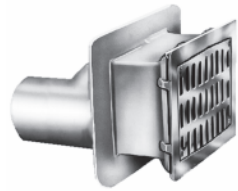


# BACKWATER VALVES

## FIG. 7000 PIT STYLE BACKWATER VALVE



**FUNCTION:** Used at the base of side walls in pits, where low elevation requires a vertical inlet grate and side outlet roughing. Backwater valve provides protection against backflow which could damage equipment in pit.



**OPTIONS:**

	03, 04"	05, 06"	08"
-C Flashing Clamp	264.00	264.00	471.00
-G Galvanized CI	658.00	658.00	1,066.00
-U Vandal Proof Screws	146.00	146.00	146.00

Stainless Steel .....Specify Fig. 9790

A OUTLET SIZE	B X B FACE SIZE	C X C	D	E	F	FREE AREA SQ. IN.	†DUCO CI	DUCO CI PB FACE	DUCO CI NB FACE	APPROX. WEIGHT LBS	ADD FOR CP FACE
03, 04"	6 3/4" x 9 1/2"	10 1/4" x 12"	3"	11 1/4"	2 3/4"	15	1,832.00	2,411.00	2,696.00	43	1,132.00
05, 06"	7 3/4" x 11"	9 3/4" x 13"	4"	13 1/4"	1 1/4"	24 1/2	2,752.00	3,331.00	3,616.00	70	1,481.00
08"	12 1/2" x 14 1/2"	17 1/4" x 19"	4"	22"	4 3/4"	56	5,356.00	7,041.00	7,218.00	150	2,584.00

**REGULARLY FURNISHED:** Duco Cast Iron Body with Backwater Valve and Cast Iron Secured Grate.

## FIG. 7012 SER. SEWER VALVE W/BOLTED COVER (7012) OR THREADED COVER (7022)

**FUNCTION:** Used in main or branch sewer lines to protect basements and low areas against backflow from the street sewers. Valve design permits access to backwater valve assembly, for servicing or cleaning, through a "full opening" bolted cover or threaded cover.

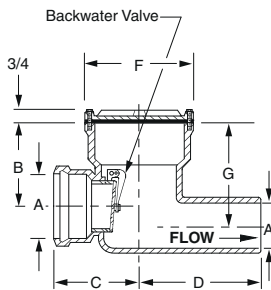


Fig. 7012  
Bolted Cover

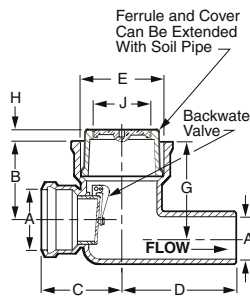


Fig. 7022  
Threaded Cover

**OUTLET VARIATIONS** (Specify type of outlet and pipe size in inches.)

Outlet Type	Outlet Designation Outlet Type/Pipe Size	ADD
Y	No-Hub Inlet and Outlet Y02, Y03, Y04, Y05, Y06, Y08	N/C

**OPTIONS:**

-G Galvanized Cast Iron		ADD
02, 03, 04"		525.00
05, 06"		880.00
08		1,572.00

Stainless Steel (Fig. 7012 Only) .....Specify Fig. 9795

A* OUTLET SIZE	B	C	D	E SIZE	F DIA	G	H	J SIZE	7012 DUCO CI BRZ VALVE	7022 DUCO CI BRZ VALVE	APPROX. WEIGHT LBS
02"	4 1/2"	5"	7"	4"	6 1/2"	6"	1 1/4"	3 1/2"	1,298.00	1,298.00	22
03"	6 1/4"	5 3/4"	9"	5"	7 1/2"	7 1/2"	1 1/2"	4"	2,035.00	2,035.00	29
04"	6 1/2"	6 1/2"	9 1/2"	6"	8 1/2"	8"	1"	5"	2,505.00	2,505.00	41
05"	7"	7 3/4"	10 1/2"	8"	10 3/4"	8 3/4"	1"	6"	3,011.00	3,011.00	54
06"	8"	7 3/4"	11 1/2"	8"	10 3/4"	9 3/4"	1"	6"	3,596.00	3,596.00	75
08"	9 1/2"	9 1/2"	12 1/2"	10"	13"	11 3/4"	1"	6"	5,055.00	5,055.00	100

\*Sized for Service Weight and/or No-Hub.

**REGULARLY FURNISHED:** Duco Cast Iron Body with Bronze Backwater Valve. Cover as Indicated by Figure Number Selected.