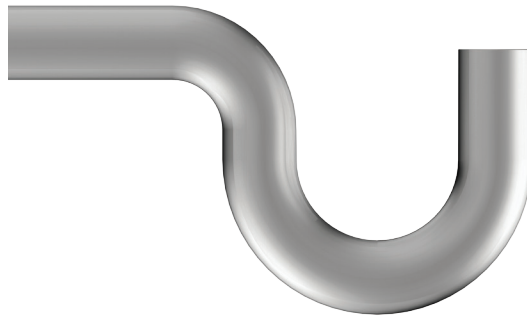




SMITH STAINLESS STEEL - BEST IN CLASS

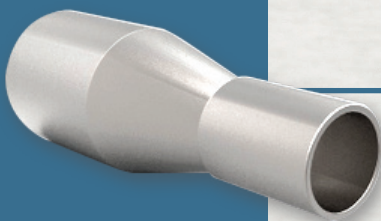
P-Trap & Hub Drain / 9650 & 9654 Series



9650

9650 General Purpose P-Trap

- Ideal where a P-trap is required in a corrosive installation
- Schedule 10 nominal wall thickness
- Available in 3", 4" and 6" pipe sizes
- Type 304 stainless steel (regularly furnished), Type 316 stainless steel (optional)



9654

9654 General Purpose Hub Drain

- Ideal for indirect waste connections
- Schedule 10 nominal wall thickness
- Available sizes: 3" outlet (4" dia. top size), 4" outlet (6" dia. top size) and 6" outlet (8" dia. top size).
- Type 304 stainless steel (regularly furnished), Type 316 stainless steel (optional).



SMITH STAINLESS STEEL - BEST IN CLASS

The most extensive stainless steel drain line in North America.

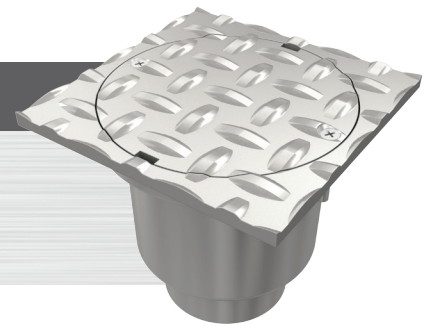


9600 SERIES - FLOOR DRAINS

9600 series floor drains are constructed from Type 304 stainless steel (Type 316 stainless steel -optional). Various configurations are available to meet the project application. Light, medium and heavy duty rated grates are available. Sediment buckets and dome bottom strainers can also be specified. Outlets are available in butt-weld (regularly furnished), threaded or no-hub varieties.

9646 SERIES - CLEANOUTS

9646 series cleanouts are constructed from Type 304 stainless steel (Type 316 stainless steel -optional). The 9646 series is a general purpose cleanout available in a round or square top with a diamond plate or smooth cover (No. 4 finish) and ABS closure plug. Outlets are available in butt-weld (regularly furnished), threaded or no-hub varieties.

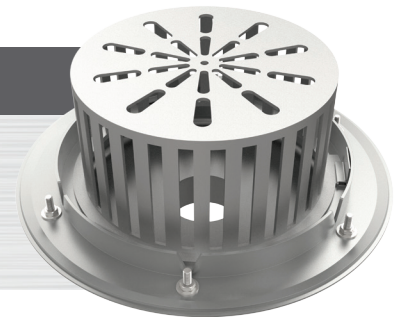


9660 SERIES - TRENCH DRAINS

Stainless steel trench drains are fabricated from Type 304 stainless steel (Type 316 stainless steel -optional). Various widths and configurations are available to accommodate your application. The Fine-Line® Designer Shower drain adds a touch of flair to your shower compartment. Our 9660 series pre-sloped modular trench drain for kitchen and related applications has a 4" no-hub bottom outlet at the low end and is supplied with secured Type 304 stainless steel 9870-450-SS slotted grates. A selection of grates is available for each drain to suit your requirements.

9680 SERIES - ROOF DRAINS

9680 series roof drains are constructed from Type 304 stainless steel (Type 316 stainless steel -optional). These general purpose roof drains are used primarily on flat roofs. The 16" diameter flange model meets the requirements of larger roof applications, while the 10-1/2" diameter flange model is ideal for smaller roof applications. Outlets are available in butt-weld (regularly furnished), threaded or no-hub varieties.



9642 / 9643 SERIES - FLOOR SINKS & INDIRECT WASTE DRAINS

The 9642 and 9643 are constructed from Type 304 stainless steel (Type 316 -optional). These floor sinks are recommended for use where light duty traffic is anticipated. A 8" square top is regularly furnished with a 4" or 6" deep sump and a loose set stainless steel slotted grate with a No. 4 finish. Outlets are available in butt-weld (regularly furnished), threaded or no-hub varieties.