



JAY R. SMITH MFG. CO.
MEMBER OF MORRIS GROUP INTERNATIONAL

STINK STOPPER

QUAD CLOSE TRAP SEAL DEVICE

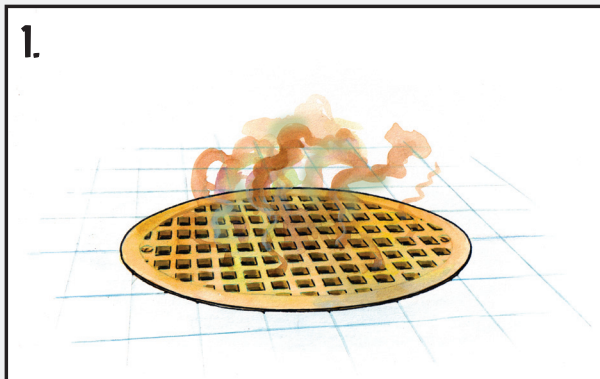


A Tested and Reliable Solution –

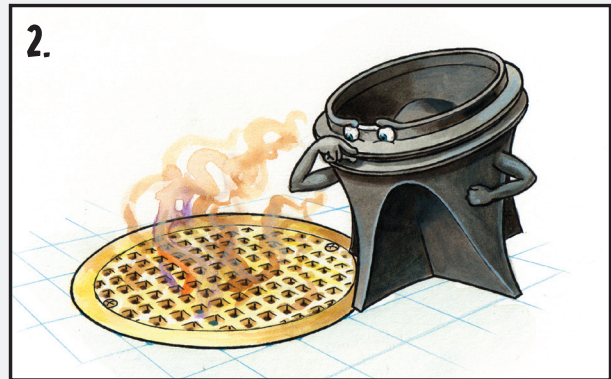
- IAPMO Listed: File No. 7479*
- ASSE Listed: Standard 1072—Record No. 1435*

The Answer to Infrequently Used Floor Drains and Sewer Gas Odors

The Quad Close Barrier Type Trap Seal Device creates a watertight seal inside the drain hub, outlet piping, or throat of the strainer.



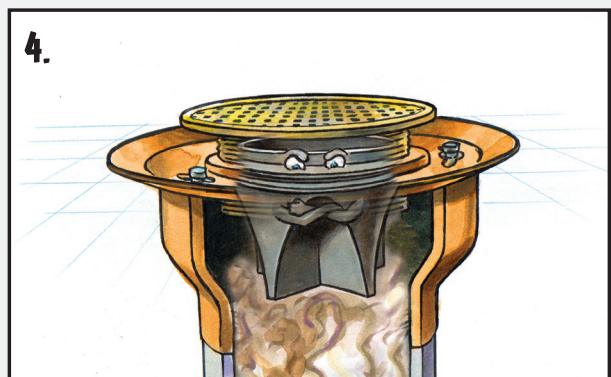
SEWER GAS EMISSIONS ARE A REAL PROBLEM.



THIS IS A JOB FOR THE STINK STOPPER!



THE STINK STOPPER IS INSERTED INTO THE STRAINER THROAT...



AND SEWER GAS EMISSIONS ARE SEALED OFF



JAY R. SMITH MFG. CO.
MEMBER OF MORRIS GROUP INTERNATIONAL

STINK STOPPER
QUAD CLOSE TRAP SEAL DEVICE



Quad Close Trap Seal Device Installation Instructions

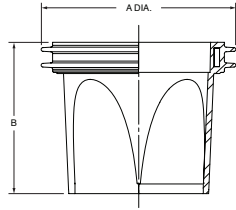
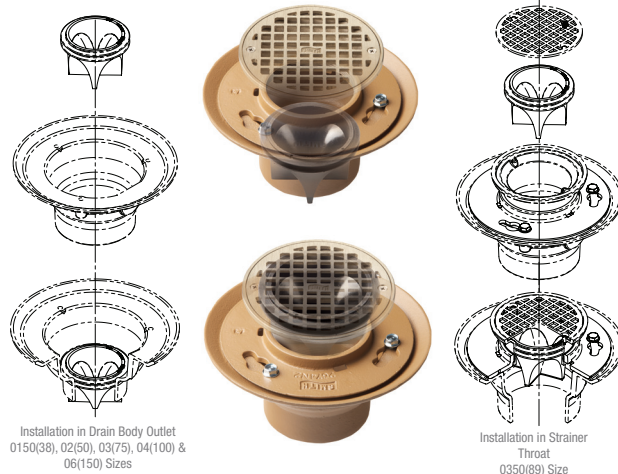


FIG. NO.	A (Pipe Size)	B	IAPMO LISTED	ASSE LISTED	GPM FLOW RATE
2692-0150	01.5(38)	2.09(53)	—	—	6.0 (22.7 L/M)
2692-02	02(50)	2.66(68)	FILE # 7479	REC.#1435 AF-GW	12.0 (45.4 L/M)
2692-03	03(75)	2.66(68)	FILE # 7479	REC.#1435 AF-GW	34.0 (128.7 L/M)
2692-0350	0350(89)	2.66(68)	FILE # 7479	REC.#1435 AF-GW	51.0 (193.06 L/M)
2692-04	04(100)	2.66(68)	FILE # 7479	REC.#1435 AF-GW	73.0 (276.4 L/M)
2692-06	06(150)	3.66(93)	—	—	215.0 (814.0 L/M)

NOTE: Dimensions shown in parentheses are in millimeters.



INSTALLATION: The 0150(38), 02(50), 03(75), 04(100) & 06(150) Quad Close Trap Seal sizes install in the drain outlet. The 0350(89) Quad Close Trap Seal size installs in the throat of adjustable strainers. To install simply insert the Quad Close Trap Seal in the drain outlet or throat of strainer until the top of it is flush with top of drain outlet or strainer throat.

Patent No. 8,844,572

Categories	Quad Close Trap Seal Device Overview—Fig. #2692
Function:	The purpose of the trap seal is to minimize the evaporation of the trap seal for the floor drain. It will open to allow the flow of drainage and close when there is no flow. The trap seal is for use in the floor drain outlet or the throat of adjustable strainers.
Performance:	The Quad Close Trap Seal has been tested for thousands of hours with extraordinarily minimal loss of water due to evaporation.
Material:	The Quad Close Trap Seal is made from a chemically resistant elastomer.
Features and Sizes:	Designed to handle a wide range of pipe and internal drain body diameters. It can be retrofitted into existing drains. Available in 1-1/2", 2", 3", 3-1/2", 4", & 6" sizes. For drain installations, simply insert the trap seal in the drain outlet until the trap seal is either flush with the bottom of the drain or top of outlet piping. For strainer installations, insert the trap seal as low as possible into the throat of the strainer.
Benefits:	If sewer gases are escaping into the room due to the lack of water to maintain a water seal in the floor drain trap, this device can easily be inserted into the drain to prevent evaporation of trap seal water and to prevent sewer gases from escaping into the room. It will help mitigate backflow.



JAY R. SMITH MFG. CO.
MEMBER OF MORRIS GROUP INTERNATIONAL

Plumbing and Drainage Products
P.O. Box 3237 • Montgomery, AL 36109-0237
Tel 800-467-6484 • 334-277-8520
Fax 334-272-7396

www.jrsmith.com

SPM0579-1410

Visit www.jrsmith.com to see our product offering and other resources.



MORRIS GROUP
INTERNATIONAL
www.morrisgroup.co