

ZIP TRENCH™

12" WIDE 9960 SERIES TRENCH DRAIN SYSTEM

0-60 FEET IN 6 SECTIONS



JAY R. SMITH MFG. CO.®
MEMBER OF MORRIS GROUP INTERNATIONAL



12" WIDE 9960 SERIES TRENCH DRAIN SYSTEM

Zip Trench Features:

- Fast, long, pre-assembled runs: 9'-10" (3 meter) long channels
- 16 channels—12 sloping and 4 neutral from a depth of 7-9/16" - 22-9/16"
- 4 grate types: Class C - Stainless steel perforated and mesh
 - Galvanized steel perforated and meshClass E - Ductile Iron ADA
 - Ductile Iron Slotted



Polypropylene Material:

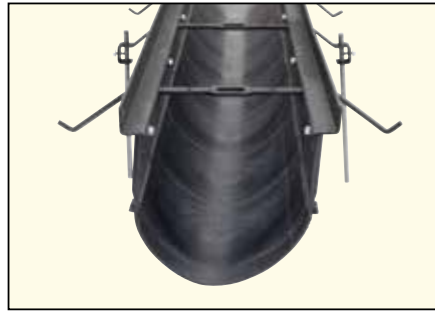
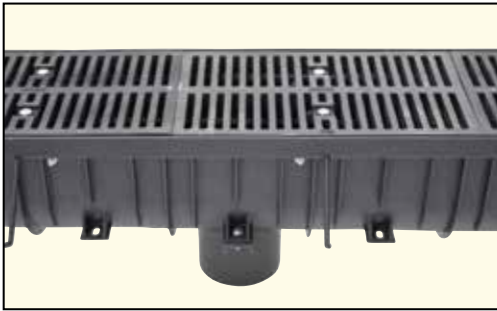
- Max temp of 180°F vs. 140°F for polyethylene
- Lighter weight and faster to install than cast-in-place.
- Better chemical resistance than polyethylene.
- Includes UV inhibitors.

Vertical Outlets

- 4", 6", and 8" no-hub vertical outlets
- Mounting lugs on every 9-13/16" (1/4 meter) center.
- End outlets and end caps available. (see back cover)



Other Views:



Heavy polypropylene ribbing throughout to reinforce during concrete pour

Male/Female lap joints for speed

Frames:

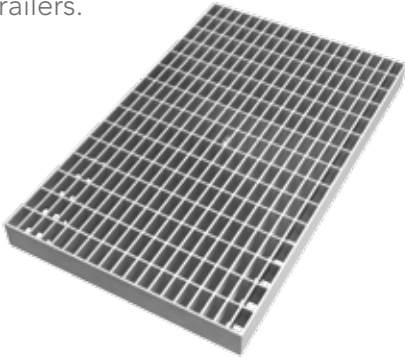
- One piece - 9'-10" (3 meters) long.
- 7 gauge
- Extra heavy-duty painted steel frame is standard; also available in galvanized or stainless steel.
- Transfers traffic load to surrounding concrete

Weight:

- Average weight—channel and frame without grates is 91 lbs.
- Grate weight is listed on the back page.

GRATES

Heavy Duty, DIN 19580 Load Class C: 56,000 lbs - 1,162 psi. For commercial pneumatic tire traffic patterns, forklifts and tractor trailers.



Galv. steel mesh grate
(309.56 sq. in.) 1/2 meter
Wt per 1/2 meter 20.45 lbs

Galv. steel mesh grate
(157.62 sq. in.) 1 meter
Wt per 1 meter 40.57 lbs

Stainless steel mesh grate
(309.56 sq. in.) 1/2 meter
Wt per 1/2 meter 20.45 lbs

Stainless steel mesh grate
(157.62 sq. in.) 1 meter
Wt per 1 meter 40.57 lbs



Perforated galv. steel grate
(39.00 sq. in.) 1/2 meter
Wt per 1/2 meter 25.71 lbs

Perforated galv. steel grate
(78.00 sq. in.) 1 meter
Wt per 1 meter 51.43 lbs

Perforated stainless steel grate
(39.00 sq. in.) 1/2 meter
Wt per 1/2 meter 25.71 lbs

Perforated stainless steel grate
(78.00 sq. in.) 1 meter
Wt per 1 meter 51.43 lbs

Extra Heavy Duty, DIN 19580 Class E: 135,000 lbs - 2,788 psi. For commercial solid tire traffic patterns, forklifts and impacts from steel struts or metal wheels.



Ductile iron ADA grate
(58.00 sq. in.) 1/2 meter
Wt per 1/2 meter 66.75 lbs



Ductile iron slotted grate
(87.87 sq. in.) 1/2 meter
Wt per 1/2 meter 52.66 lbs

ACCESSORIES



4", 6" and 8" Universal Horizontal Cap



End Cap



4", 6", and 8" No-Hub Vertical Outlet Fitting



JAY R. SMITH MFG. CO.
MEMBER OF MORRIS GROUP INTERNATIONAL
P.O. Box 3237 • Montgomery, AL 36109
TEL: 334.277.8520

www.jrsmith.com

