

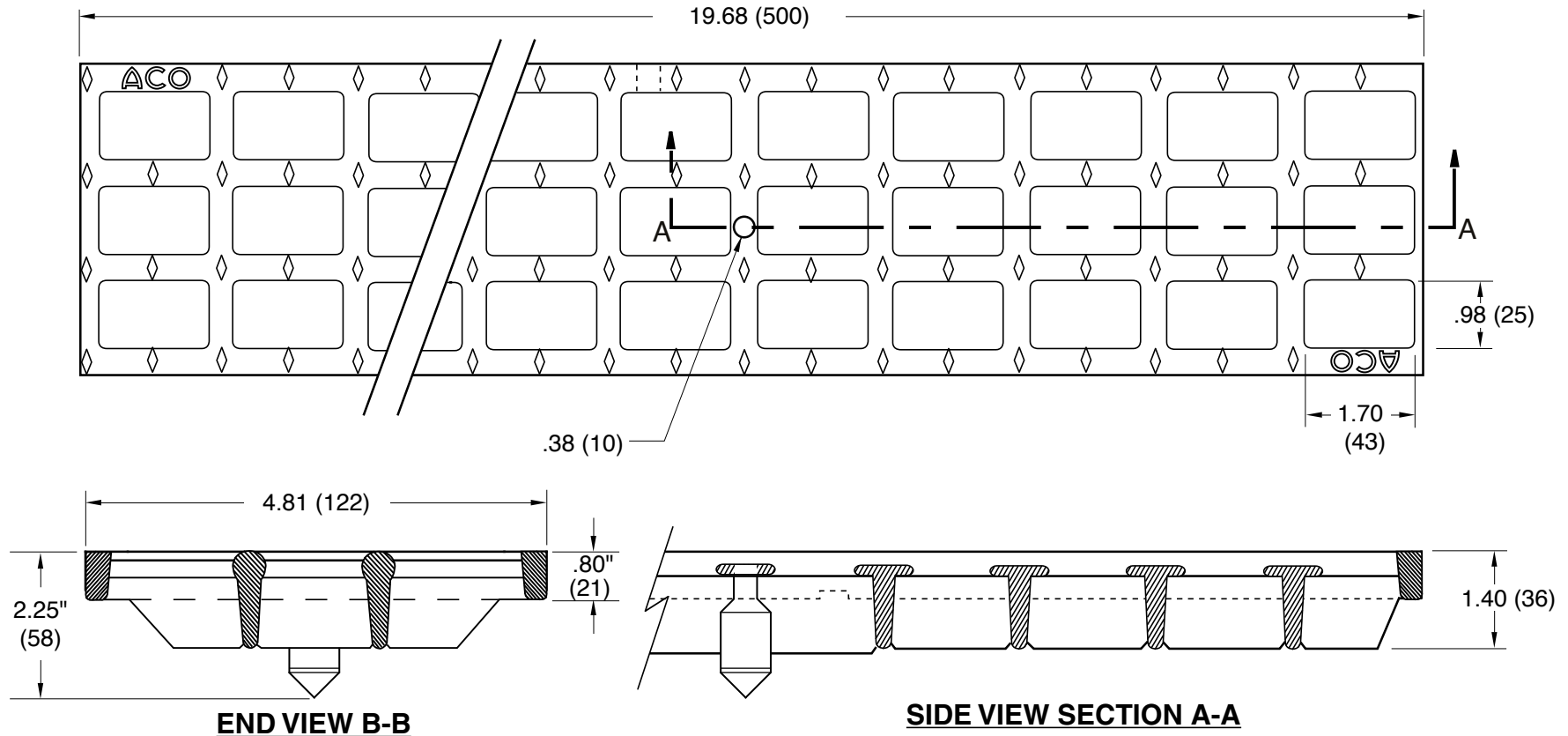
FIGURE NUMBER	9870-477D-ML	DRAWN BY: RN	CHECKED BY: MD	APPROVED BY: MD	DATE: 2-9-01	SCALE: NONE	SIZE A	DRAWING NUMBER a9870-477D-ML	A
---------------	---------------------	-----------------	-------------------	--------------------	-----------------	----------------	------------------	---------------------------------	----------

DIMENSIONS ARE SUBJECT TO MANUFACTURERS TOLERANCE AND CHANGE WITHOUT NOTICE

WE CAN ASSUME NO RESPONSIBILITY FOR USE OF SUPERSEDED OR VOID DATA

9870-477D-ML LONGITUDINAL SLOTTED DUCTILE IRON GRATE

Extra Heavy Duty, DIN 19580 Class E - 135,000 lbs - 2,788 psi
For Commercial Solid Tire Traffic Patterns, Forklifts and Impacts from Steel Struts or Metal Wheels.



REGULARLY FURNISHED:
 Black Duco Coated 1/2 Meter Ductile
 Iron Longitudinally Slotted Grate with
 Quicklock Securing Feature.
 95 SQ IN Open Area.

NOTE: Dimensions in
 parentheses are Metric.



SMITH® JAY R. SMITH MFG. CO.®
 MEMBER OF MORRIS GROUP INTERNATIONAL
 POST OFFICE BOX 3237
 MONTGOMERY, ALABAMA 36109-0237 (USA)
 TEL: 334-277-8520 FAX: 334-272-7396 www.jrsmith.com



A	09/15/04	Revised Drawing Format	JJ	PJ
REV.	DATE	DESCRIPTION	BY	CKD. BY