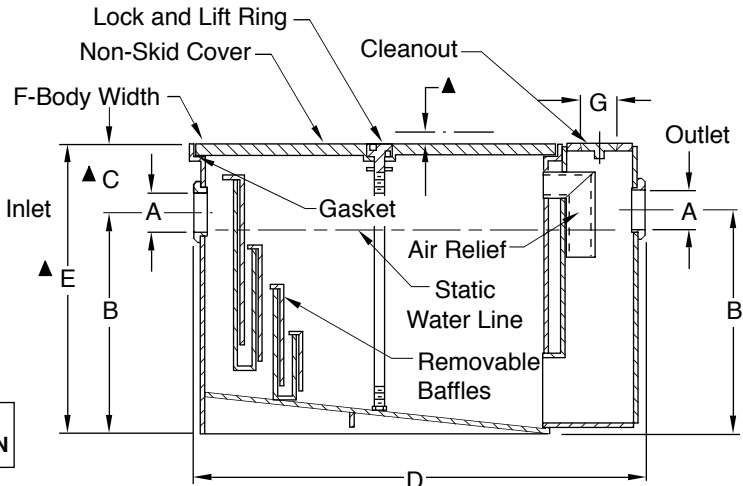


GREASE INTERCEPTORS

FUNCTION: Used in kitchens, restaurants, institutions, and all types of food processing areas where waste water contains grease, fats and oil. Rate of flow into interceptor is controlled by a flow control fitting, thus enabling the interceptor to collect over 90% of the grease which flows into it. "Uni-lock" cover design permits fast cover removal for periodic cleaning. Interceptor may be set on floor, semi-recessed in floor or fully recessed with cover flush with finished floor. Fig. 8100 Series are extra low designs adaptable for use with dishwashers or low roughing sinks.



**SIDE VIEW
FIG. 8010 SHOWN**



Figs. 8007 thru 8050, 8120 and 8135 carry the Plumbing and Drainage Institute Certification Seal Certifying conformance to Grease Interceptor Standard PDI-G101.

NOTE: It is the responsibility of the installer to check all parts (internal and external) to verify they are in their proper operating order and location.

NOTE: Whenever an interceptor is to be installed suspended in a floor slab with a cradle or independently, proper support is essential for safety and functional integrity of the installation.

NOTE: When tile or Terrazzo top is specified add 1 1/4"(32)

FIG NO.	GPM FLOW RATE	MIN. GREASE CAP. LBS.	INLET AND OUTLET SIZE A*	DIMENSIONS						C.O. PLUG SIZE
				ROUGHING DIMENSIONS			BODY			
				B	C	D	HEIGHT E	WIDTH F	G	
8004	4	8	02(50)	7 3/4(195)	3 1/4(83)	16 3/4(425)	11(280)	9(230)	2(51)	
8007	7	14	02(50)	8 1/2(215)	3 1/2(89)	19(485)	12(305)	10(255)	2(51)	
8010	10	20	02(50)	9 1/2(240)	3 3/4(95)	21 1/4(540)	13 1/4(335)	11 1/2(290)	2(51)	
8015	15	30	02(50)	12(305)	3 1/2(89)	25(635)	15 1/2(395)	13 1/2(345)	2(51)	
8020	20	40	03(75)	13(330)	4(100)	28 1/2(725)	17(430)	15 3/4(400)	2(51)	
8025	25	50	03(75)	15 1/4(390)	4 1/2(115)	30(760)	19 3/4(500)	16 3/4(425)	2(51)	
8035	35	70	03(75)	16(405)	5(125)	32 1/2(825)	21(535)	18 1/4(465)	2(51)	
8050	50	100	03(75)	17 1/2(445)	6 3/4(170)	35 1/2(900)	24 1/4(615)	20 3/4(525)	2(51)	
LOW TYPE										
8120	20	40	03(75)	7(180)	3 1/2(89)	38 1/2(980)	10 1/2(265)	21 3/4(550)	2(51)	
8135	35	70	03(75)	7(180)	4 3/4(120)	49 1/2(1257)	11 3/4(300)	27 3/4(705)	2(51)	
8150	50	100	03(75)	10(255)	6(150)	49 1/2(1257)	16(405)	27 3/4(705)	2(51)	

*Available with larger inlet and outlet when specified.

REGULARLY FURNISHED:
 Steel Interceptor with Gray Duco Coating Inside and Outside and Flow Control Fitting.

- VARIATIONS:**
- ▲ Cover Recessed for Terrazzo, Ceramic or Quarry Tile -QC
 - ▲ Cover Recessed for Vinyl or Asphalt Tile -TC
 - Lift Out Sediment Bucket -B
 - NO-HUB Adaptor (2) Req'd (Specify Fig. 2646Y)

- OPTIONAL MATERIALS:**
- Acid Resistant Coating Inside - ARI
 - Acid Resistant Coating Outside - ARO
 - Acid Resistant Coating Inside and Outside - ARIO
 - Aluminum Cover -AC
 - Coal Tar Epoxy Outside -CTO

NOTE: Dimensions shown in parentheses are in millimeters.

DRAWING NUMBER: S8000 SERIES
 SIZE: A
 SCALE: NONE
 DATE: 4-24-85
 APPROVED BY: SJM
 CHECKED BY: JD
 DRAWN BY: PJ
8000 SERIES
 DIMENSIONS ARE SUBJECT TO MANUFACTURERS TOLERANCE AND CHANGE WITHOUT NOTICE

REV.	DATE	DESCRIPTION	BY	CKD. BY	WEIGHT POUNDS	VOLUME CUBIC FEET	FIGURE NUMBER
							8000 SERIES