

R

SMITH® JAY R. SMITH MFG. CO.®
 MEMBER OF MORRIS GROUP INTERNATIONAL
 POST OFFICE BOX 3237
 MONTGOMERY, ALABAMA 36109-0237 (USA)
 TEL: 334-277-8520 FAX: 888-377-7818 www.jrsmith.com

ASPE
PDPI
 MEMBER OF:

LOCATION

DRAWING NUMBER
S2710

SIZE
A

SCALE:
NONE

DATE:
11-6-89

APPROVED BY:
McD

CHECKED BY:
SB

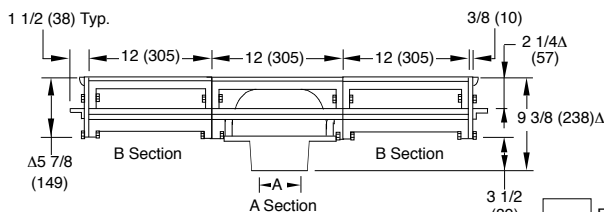
DRAWN BY:
EMB

FIGURE NUMBER
2710 Series

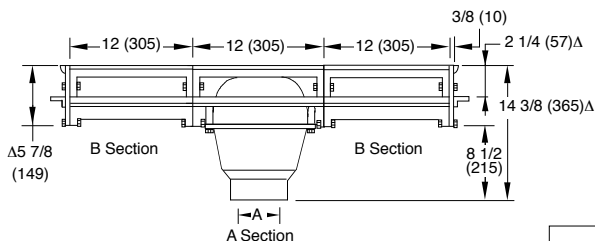
WE CAN ASSUME NO RESPONSIBILITY FOR USE OF SUPERSEDED OR VOID DATA

12 1/8" (308) WIDE REVEAL TRENCH DRAINS

Free Area
39.3 SQ IN
(254)SQ CM
(Each Section)



A (Pipe Size) = 03(75), 04(100), 05(125), 06(150) or 08(200)



A (Pipe Size) = 03(75), 04(100), 05(125), 06(150) or 08(200)

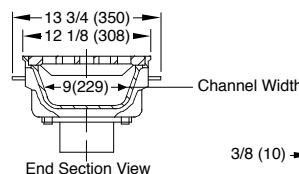


Fig. 2710C..... CAULK OUTLET
Fig. 2710Y..... NO-HUB OUTLET
Shallow Hub Body

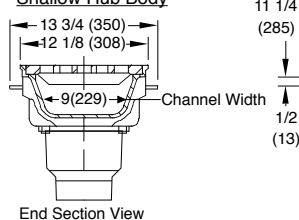
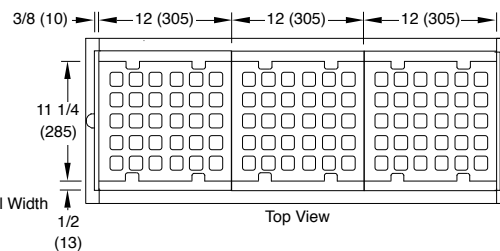


FIG. 2710C (-DH)..... CAULK OUTLET
FIG. 2710Y (-DH)..... NO-HUB OUTLET
Deep Hub Body

Note: Apply sealant provided between each section and end plate prior to assembling.



Assembly ordering Information:

A and B sections are both 12"(305) long. A section is the outlet section and available in the standard hub or deep outlet hub (-DH). B section is the extension section. It is recommended that no more than 5, 12"(305) extension sections on each side of the A outlet section be used. Each section is 12" (305) long and end plates are 1 1/2"(38) thick including flange. In determining overall length, multiply 12" (305) x no. of sections and add 3"(76) (thickness of the two end plates).

REGULARLY FURNISHED:

Duco Cast Iron Flanged Body
Outlet Section A and Flanged End Plate with Cast Iron Anti-Shift Loose Set Medium Duty Square Hole Grate.

**For Heavy Duty Specify: Ductile Iron Grate-M.

Δ Add 1 1/4" (32) when Bronze Top is specified.

Note: B sections are shown above with the A section for illustrative purposes only. Only the A section is regularly furnished and additional B sections must be specified as determined by figure number.

- FIG. 2710 "A" Section
- FIG. 2711 "A" Section with (1) "B" Section
- FIG. 2712 "A" Section with (2) "B" Section
- FIG. 2713 "A" Section with (3) "B" Section
- FIG. 2714 "A" Section with (4) "B" Section
- FIG. 2715 "A" Section with (5) "B" Section
- FIG. 2716 "A" Section with (6) "B" Section
- FIG. 2717 "A" Section with (7) "B" Section
- FIG. 2718 "A" Section with (8) "B" Section
- FIG. 2719 "A" Section with (9) "B" Section
- FIG. 2720 "A" Section with (10) "B" Section

NOTE: Last digit of figure number designates number of "B" sections.

NOTE: Any figure number other than the 2710 and 2711 must be furnished with sectional layout when placing order, to insure proper assembly at job site.

VARIATIONS:

- Backwater Valve -V 02(50) -04"(100) (Deep Hub Body Only)
- Deep Hub -DH, Not Available in 08"(200)
- Dome Bottom Strainer -DBS
- Flashing Clamp -C
- Sediment Bucket -B (Deep Hub Body only)
- Vandal Proof Grate -U
- Quad Close Trap Seal (Specify Fig. 2692)

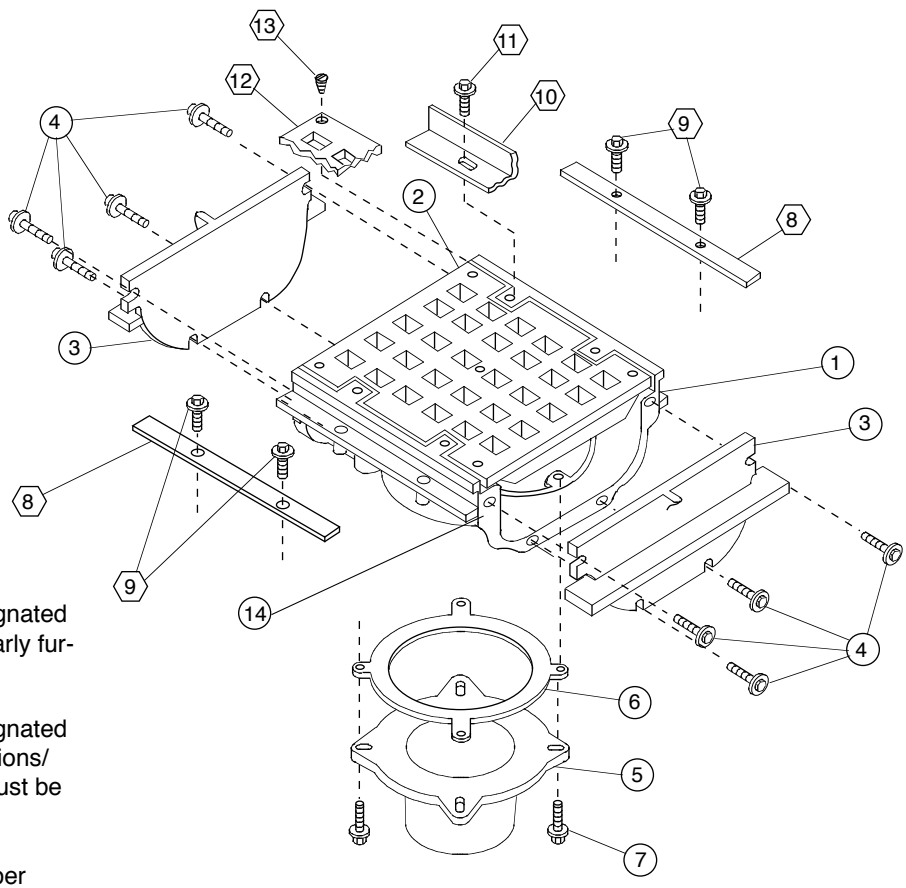
OPTIONAL MATERIALS:

- Ductile Iron Grate -M
- Galvanized Cast Iron -G
- Nickel Bronze Top -NB
- Polished Bronze Top -PB
- Nickel Bronze
- Heel Proof Top -NBHP
- Polished Bronze
- Heel Proof Top -PBHP

NOTE: Dimensions shown in parentheses are in millimeters.

R	12-21-22	Changed 12" to 12 1/8"	KK	CL	WEIGHT POUNDS	VOLUME CUBIC FEET	FIGURE NUMBER 2710 Series
Q	4-7-22	Added -NBHP and -PBHP to opt.	KK	CL			
P	5-27-21	Rem. Func. & Added to Reg. Furn.	KK	JT			
N	7-14-15	Revised Variations	KBW	CL			
REV.	DATE	DESCRIPTION	BY	CKD. BY			

ASSEMBLY DRAWING



- NOTES:**
- Numbers designated thus are regularly furnished parts.
 - ⬡ Numbers designated thus are variations/options and must be specified.

* Quantities are per section.

NO.	DESCRIPTION	QU.*	NO.	DESCRIPTION	QU.*
①	Flanged Body (Specify)	1	⑧	Flashing Flange	4
②	Grate	1	⑨	5/16(8)-18 x 3/4(19) Bolt with Washer	8
③	Flanged End Plates	2	⑩	Body Veneer	1
④	5/16(8)-18 x 1 3/4(44) Bolts/Nuts & Washer	8	⑪	5/16(8)-18 x 3/4(19) Bolt with Washer	4
⑤	Hub (Specify Size)	1	⑫	Grate Veneer	1
⑥	Gasket	1	⑬	10-24 x 7/16(11) Flat Head Screws	5
⑦	5/16(8)-18 x 1 1/4(32) Bolt & Washer	4	⑭	Apply Permatex #2 Seal to each end of each body section	2

DRAWING NUMBER: S2710BS
 SIZE: A
 SCALE: NONE
 DATE: 3-26-90
 APPROVED BY: TD
 CHECKED BY: BS
 DRAWN BY: EMB
 2710 Assembly Drawing
 DIMENSIONS ARE SUBJECT TO MANUFACTURERS TOLERANCE AND CHANGE WITHOUT NOTICE

REV.	DATE	DESCRIPTION	BY	CKD. BY	WEIGHT POUNDS	VOLUME CUBIC FEET	FIGURE NUMBER 2710 Assembly Drawing
D	4-9-08	Revised Callouts	TBW	AM			
C	11-5-97	Revised Dwg & Callouts	EMB	BS			
B	6-19-95	Added Millimeters	EMB	BS			
A	3-91	Added Flange & Boss	EMB	JCS			