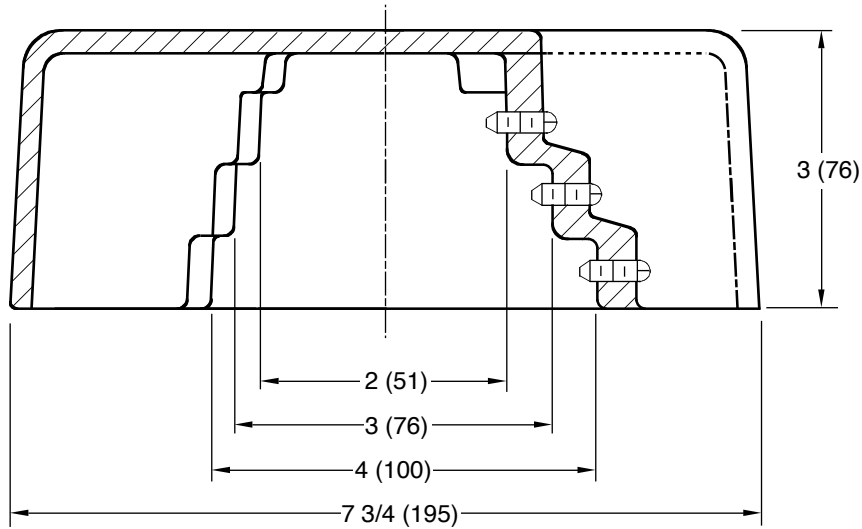


# ROOF ACCESSORY

## VENT CAP VANDAL PROOF HOODED TYPE COUNTER FLASHING

**FUNCTION:** Recommended for all plumbing vents which terminate above the roof level. Unique vandal proof design eliminates the possibility of sticks or other materials being either carelessly or maliciously placed in the vent openings, thus causing stoppage of the drainage system.



**NOTE:** Dimensions shown in parentheses are in millimeters.

(Pipe Sizes) = 02(50), 03(75) or 04(100)

Fig. 1748. . . VENT CAP

**REGULARLY FURNISHED:**

Duco Cast Iron Dome Secured with Recessed Allen Socket Set Screws.

**OPTIONAL MATERIALS:**

Galvanized Cast Iron -G

DRAWING NUMBER **S1748**  
 SIZE **A**  
 SCALE: **NONE**  
 DATE: **5-24-85**  
 APPROVED BY: **TD**  
 CHECKED BY: **TD**  
 DRAWN BY: **VGD**

WE CAN ASSUME NO RESPONSIBILITY FOR USE OF SUPERSEDED OR VOID DATA  
 DIMENSIONS ARE SUBJECT TO MANUFACTURERS TOLERANCE AND CHANGE WITHOUT NOTICE

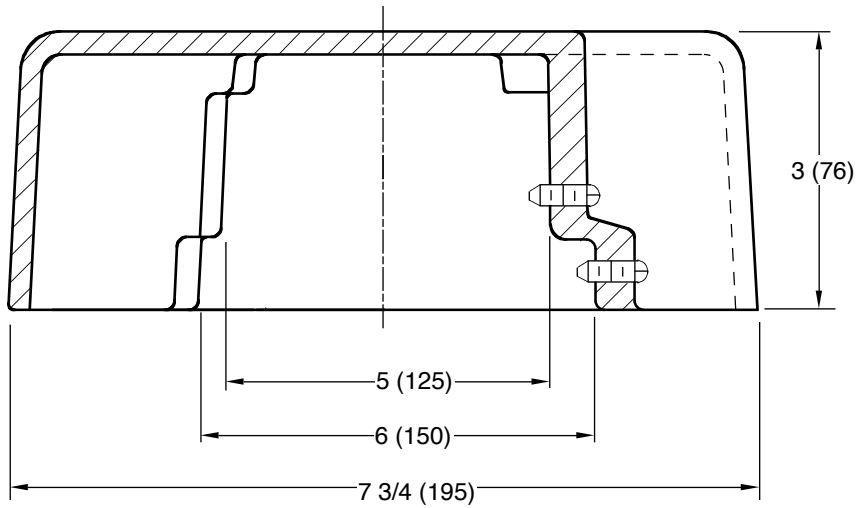
**1748**

FIGURE NUMBER	F E	03/01/02 6-16-99	Deleted 1 1/2" optional pipe size Revised Millimeters	JJ CMD	BS	WEIGHT POUNDS	VOLUME CUBIC FEET	FIGURE NUMBER <b>1748</b>
	REV.	DATE	DESCRIPTION	BY	CKD. BY			

# ROOF ACCESSORY

## VENT CAP VANDAL PROOF HOODED TYPE COUNTER FLASHING

**FUNCTION:** Recommended for all plumbing vents which terminate above the roof level. Unique vandal proof design eliminates the possibility of sticks or other materials being either carelessly or maliciously placed in the vent openings, thus causing stoppage of the drainage system.



**NOTE:** Dimensions shown in parentheses are in millimeters.

(Pipe Size) = 05 (125) or 06 (150)

Fig. 1748. . . VENT CAP

**REGULARLY FURNISHED:**  
 Duco Cast Iron Dome Secured with Recessed Allen Socket Set Screws.

**OPTIONAL MATERIALS:**  
 Galvanized Cast Iron -G

DRAWING NUMBER S1748BS  
 SIZE A  
 SCALE: NONE  
 DATE: 5-24-85  
 APPROVED BY: TD  
 CHECKED BY: TD  
 DRAWN BY: VGD

WE CAN ASSUME NO RESPONSIBILITY FOR USE OF SUPERSEDED OR VOID DATA  
 DIMENSIONS ARE SUBJECT TO MANUFACTURERS TOLERANCE AND CHANGE WITHOUT NOTICE

FIGURE NUMBER	1748BS	REV.	DATE	DESCRIPTION	BY	CKD. BY	WEIGHT POUNDS	VOLUME CUBIC FEET	FIGURE NUMBER
		C B A	6-26-96 7-1-94 10-91	Revised Submittal Update Revised drawing	EMB EMB CMB	BS SB			<b>1748BS</b>