

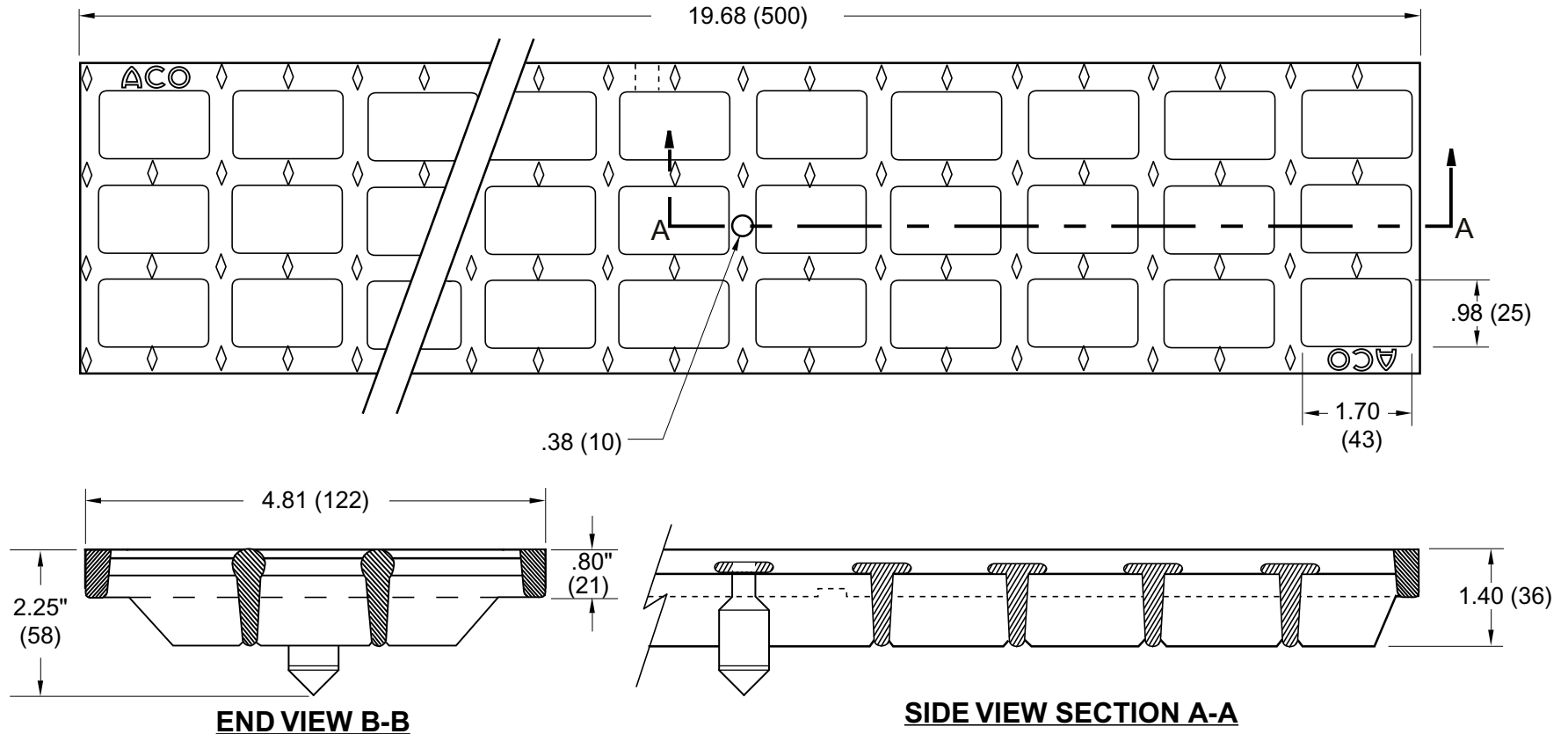
FIGURE NUMBER	<b>9870-477D-ML</b>	DRAWN BY: RN	CHECKED BY: MD	APPROVED BY: MD	DATE: 2-9-01	SCALE: NONE	SIZE <b>A</b>	DRAWING NUMBER a9870-477D-ML	<b>A</b>
---------------	---------------------	-----------------	-------------------	--------------------	-----------------	----------------	------------------	---------------------------------	----------

DIMENSIONS ARE SUBJECT TO MANUFACTURERS TOLERANCE AND CHANGE WITHOUT NOTICE

WE CAN ASSUME NO RESPONSIBILITY FOR USE OF SUPERSEDED OR VOID DATA

# 9870-477D-ML LONGITUDINAL SLOTTED DUCTILE IRON GRATE

**Extra Heavy Duty, DIN 19580 Class E - 135,000 lbs - 2,788 psi**  
**For Commercial Solid Tire Traffic Patterns, Forklifts and Impacts from Steel Struts or Metal Wheels.**



**REGULARLY FURNISHED:**  
 Black Duco Coated 1/2 Meter Ductile  
 Iron Longitudinally Slotted Grate with  
 Quicklock Securing Feature.  
 95 SQ IN Open Area.

**NOTE:** Dimensions in  
 parentheses are Metric.



**SMITH® JAY R. SMITH MFG. CO.®**  
 DIVISION OF SMITH INDUSTRIES, INC.  
 POST OFFICE BOX 3237  
 MONTGOMERY, ALABAMA 36109-0237 (USA)  
 TEL: 334-277-8520 FAX: 334-272-7396 www.jrsmith.com



MEMBER OF:



A	09/15/04	Revised Drawing Format	JJ	PJ
REV.	DATE	DESCRIPTION	BY	CKD. BY