



LOCATION

9835 INSTALLATION DETAILS

DRAWING NUMBER
9835BS

SIZE
A

SCALE:
NONE

DATE:
5-4-06

APPROVED BY:
MD

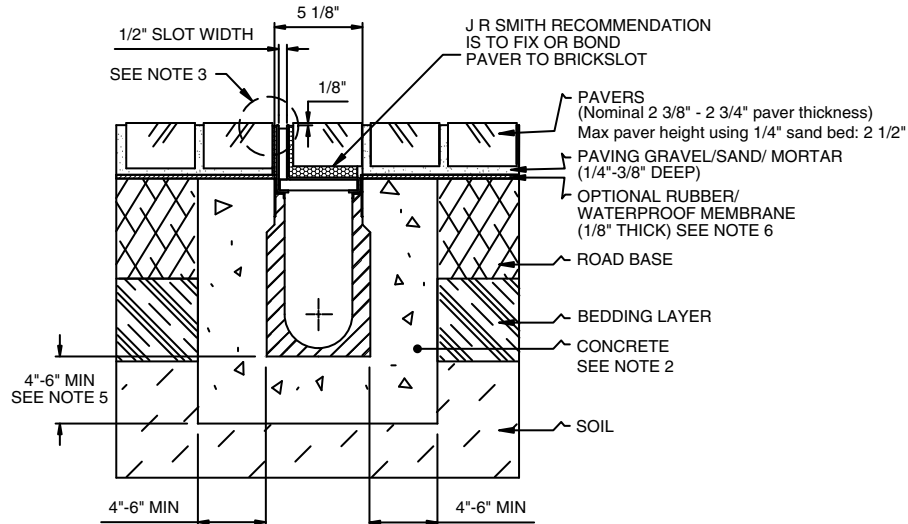
CHECKED BY:
MD

DRAWN BY:
RN

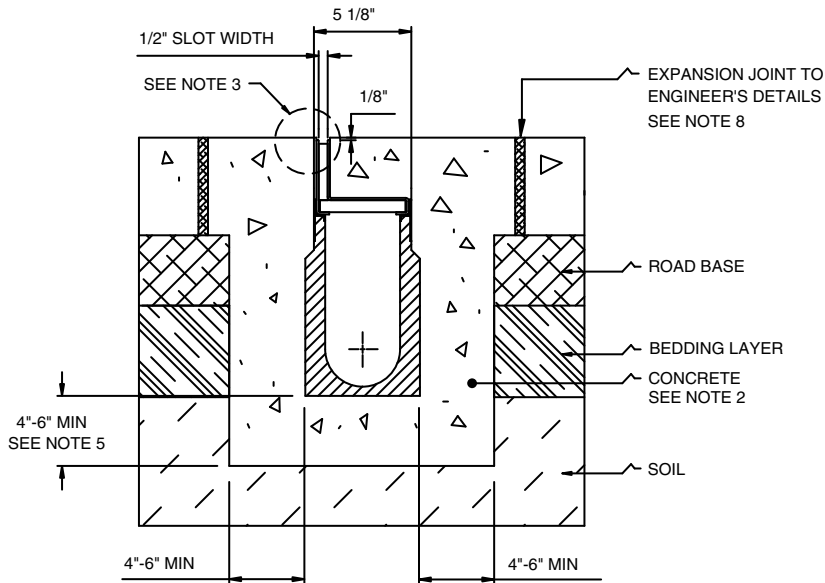
9835BS

WE CAN ASSUME NO RESPONSIBILITY FOR USE OF SUPERSEDED OR VOID DATA
 DIMENSIONS ARE SUBJECT TO MANUFACTURERS TOLERANCE AND CHANGE WITHOUT NOTICE

BRICKSLOT WITH PAVERS



BRICKSLOT ENCASED IN CONCRETE



NOTES:

1. It is necessary to ensure the minimum dimensions shown are suitable for the existing ground conditions. Engineering advice may be required.
2. A minimum concrete strength of 3000 PSI is recommended. The concrete should be vibrated to eliminate air pockets.
3. Pavers to be 1/8" above channel edge. A bead of sealant can be used between the rail & concrete.
4. Refer to J R Smith latest installation instructions for complete details.
5. Concrete base thickness should match slab thickness.
6. Contact J R Smith for recommendations on draining when using membrane material with Brickslot.
7. Where used with a Suspended Slab, engineering advice must be sought.
8. Expansion joints are recommended to protect the channel and the concrete surround.



WEIGHT POUNDS	VOLUME CUBIC FEET	FIGURE NUMBER
		9835BS

REV.	DATE	DESCRIPTION	BY	CKD.