



LOCATION

9816 CATCH BASIN

DRAWING NUMBER
a9816-CB

SIZE
A

SCALE:
NONE

DATE:
6-14-94

APPROVED BY:
PACE

CHECKED BY:
EMB

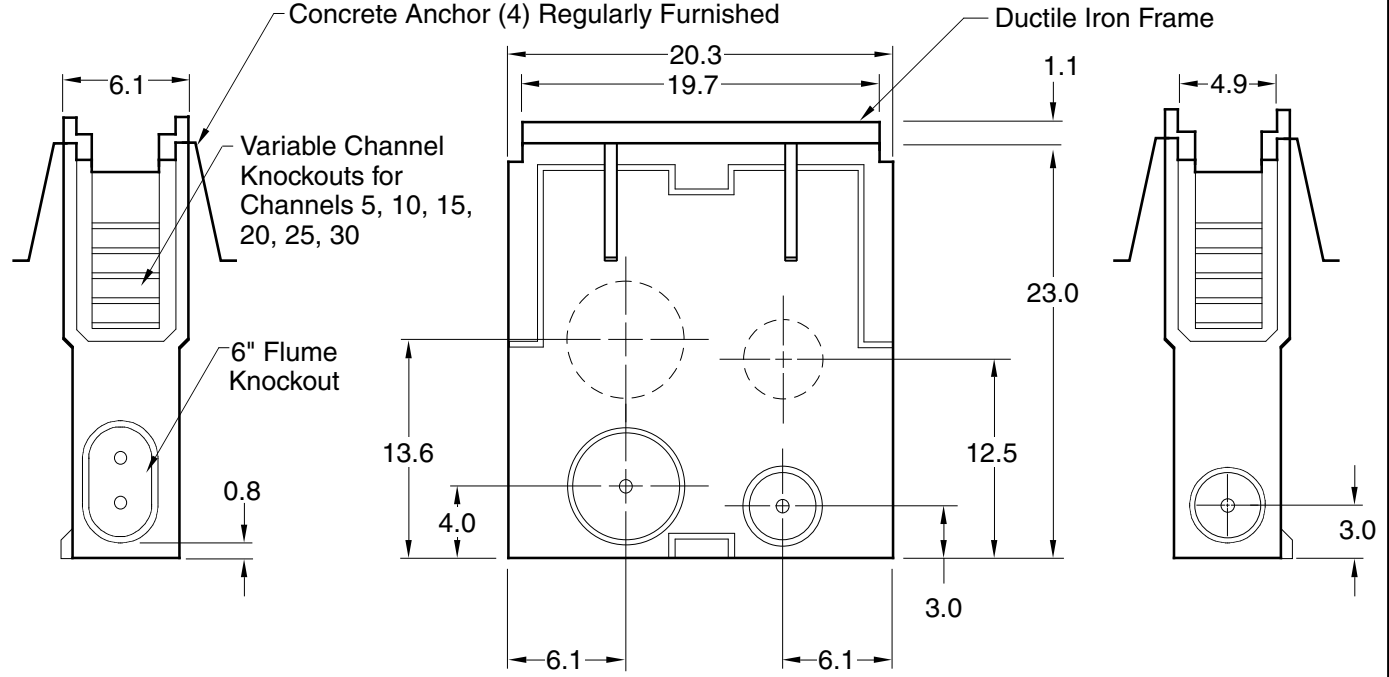
DRAWN BY:
EMB

9816-CB

FIGURE NUMBER

WE CAN ASSUME NO RESPONSIBILITY FOR USE OF SUPERSEDED OR VOID DATA

DIMENSIONS ARE SUBJECT TO MANUFACTURERS TOLERANCE AND CHANGE WITHOUT NOTICE



NOTE:
 Catch basin requires a minimum of 4" of concrete or slab thickness, whichever is greater, around and under complete unit.



BOTTOM VIEW

REGULARLY FURNISHED:
 Precast Polymer Concrete Catch Basin with Preformed 4" and 6" Knockouts, (4) Galvanized Concrete Anchors and Ductile Iron Frame. Supplied with Secured Gate.

OPTIONAL MATERIALS:
 Vinylester Resin

- VARIATIONS:**
- Foul Air Trap End
 - Foul Air Trap Side
 - Plastic Sediment Bucket
 - End Cap (Shallow Only)
 - Cast Iron Grate
 - Ductile Iron Grate
 - End Frame
 - Grate Specifications (See Back)



REV.	DATE	DESCRIPTION	BY	CKD. BY	WEIGHT POUNDS	VOLUME CUBIC FEET	FIGURE NUMBER
E	08/13/09	Deleted SS & Galv Bucket	JJ	Pace			9816-CB
D	9/16/02	Added New ACO Logo	RN	Pace			
C	05/18/01	Added Concrete Anchors	JJ	Pace			



JAY R. SMITH MFG. CO.
 DIVISION OF SMITH INDUSTRIES, INC.
 POST OFFICE BOX 3237
 MONTGOMERY, ALABAMA 36109-0237 (USA)
 TEL: 334-277-8520 FAX: 334-272-7396 www.jrsmith.com



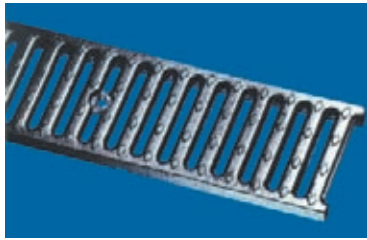
LOCATION

9816 CATCH BASIN GRATE SPECIFICATION

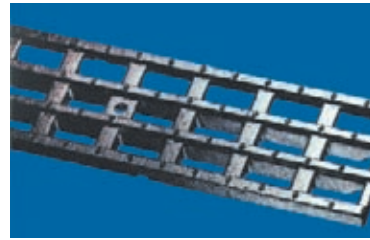
Load Class E

Extra Heavy Duty Grate

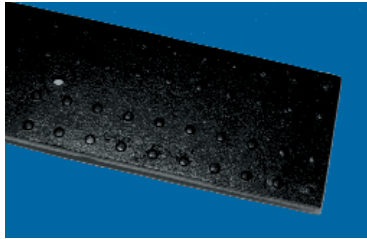
For speeds over 20 mph, traffic of 60 ton gross vehicle weight, 10 ton wheel load including solid tire forklift traffic. High resistance to impact from struts or metal wheels.



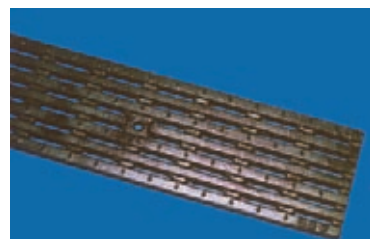
9870-461-M Slotted Ductile Iron Grate
 System for dynamic loads and hard wheel forklifts. .5 meter, 11 lbs., Open area 26.40 Sq. In. per 1/2 meter.



9870-477-ML Longitudinal Slotted Ductile Iron
 Larger, horizontal slots for increased intake capacity, For heavy loads, frequent traffic. .5 meter, 10 lbs., Open area 41.90 Sq. In. per 1/2 meter.



9870-456D-MS Solid Ductile Iron
 For pipe or conduit housing. Protects channel from debris while allowing access. .5 meter, 14 lbs.



9870-477-ADA Ductile Iron ADA
 ADA compliant design that is rated for heavy loads and frequent traffic. (.5 meter 11 lbs.) Open Area 28.50 Sq. In. per 1/2 meter.

NOTE: The grate securing bolt must remain secured in the grate and is tightened to the locking bar installed in the catch basin. If the grate securing bolt is removed from the grate for maintenance of the catch basin, it must be replaced and retightened. If the grate securing bolt is left out of the grate, the life span of the catch basin could be affected along with the safety of pedestrian traffic.

DRAWING NUMBER
 s9816-CB-BS

SIZE
 A

SCALE:
 NONE

DATE:
 03/20/00

APPROVED BY:

CHECKED BY:

DRAWN BY:
 SA

9816-CB-BS

DIMENSIONS ARE SUBJECT TO MANUFACTURERS TOLERANCE AND CHANGE WITHOUT NOTICE WE CAN ASSUME NO RESPONSIBILITY FOR USE OF SUPERSEDED VOID DATA

FIGURE NUMBER	REV.	DATE	DESCRIPTION	BY	CHD. BY:	WEIGHT POUNDS	VOLUME CUBIC FEET	FIGURE NUMBER
								9816-CB-BS