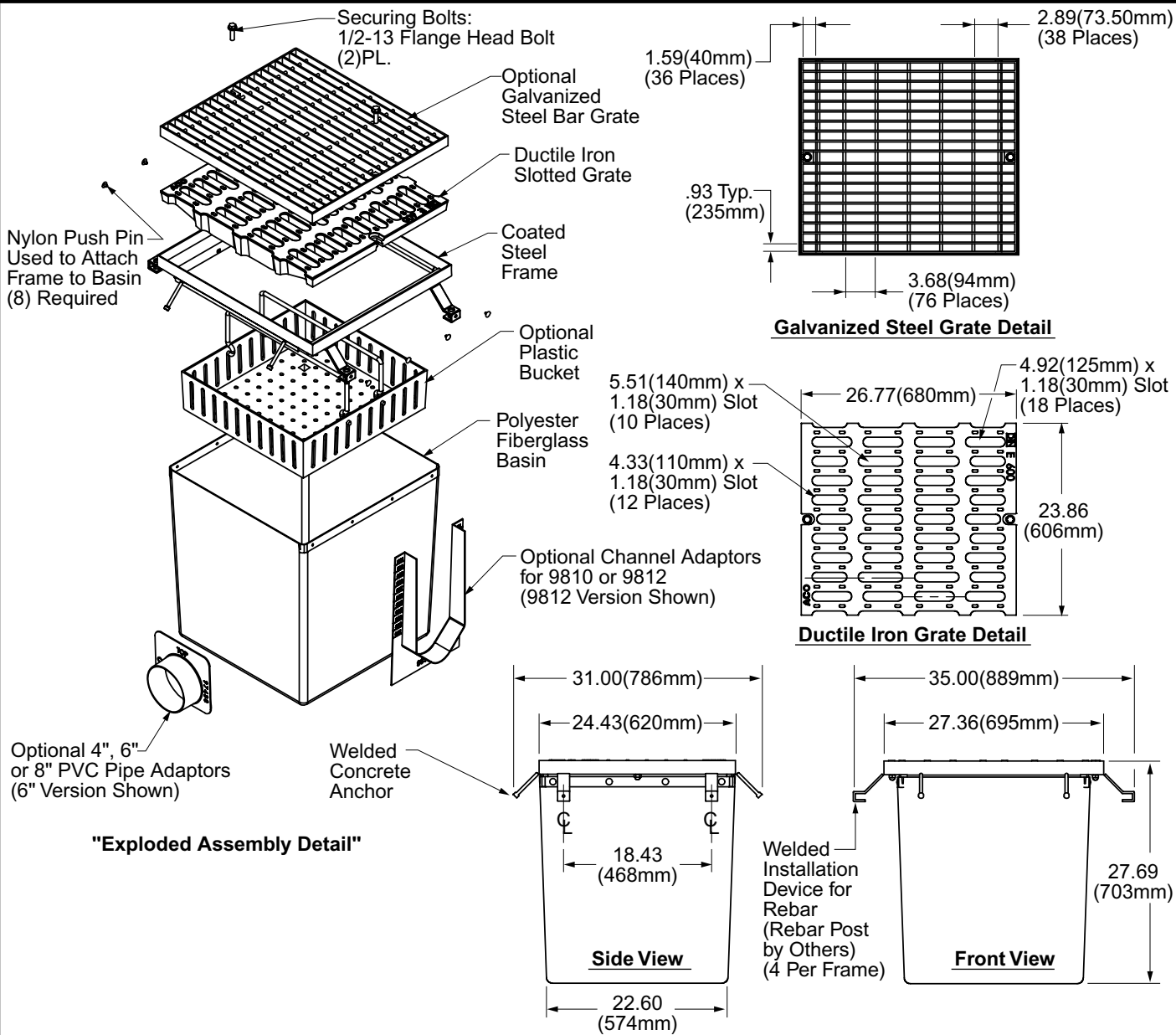


FIBERGLASS CATCH BASIN

DRAWING NUMBER: **a9812-CB24**
 SIZE: **A**
 SCALE: **NONE**
 DATE: **11-22-96**
 APPROVED BY: **PACE**
 CHECKED BY: **MSM**
 DRAWN BY: **EMB**
9812-880-CB24
 FIGURE NUMBER

WE CAN ASSUME NO RESPONSIBILITY FOR USE OF SUPERSEDED OR VOID DATA

DIMENSIONS ARE SUBJECT TO MANUFACTURERS TOLERANCE AND CHANGE WITHOUT NOTICE



- REGULARLY FURNISHED:**
 Polyester Resin Fiberglass Catch Basin
 Duco Coated Steel Frame with Integral Installation Brackets and Secured Ductile Iron Slotted Grate (Load Class E)
- OPTIONAL MATERIALS:**
 Vinylester Resin
- VARIATIONS:**
- Galvanized Steel Frame
 - Galvanized Steel Bar Grate
 - Stainless Steel Bar Grate
 - Stainless Steel Frame
 - Plastic Trash Bucket
 - 4" PVC Sch. 40 Pipe Adaptor
 - 6" PVC Sch. 40 Pipe Adaptor
 - 8" PVC Sch. 40 Pipe Adaptor
 - 9810 Channel/Catch Basin Adaptor
 - 9812 Channel/Catch Basin Adaptor



G	8-18-04	Revised Dwg	TBW	PJ	WEIGHT POUNDS	VOLUME CUBIC FEET	FIGURE NUMBER 9812-880-CB24
F	9-5-02	Added New ACO Logo	RN	PJ			
E	3-16-01	Revised Dwg	RN	PJ			
D	2-7-01	Revised Dwg	RN	PJ			
C	11-22-00	Revised Dwg	RN	MD			
REV.	DATE	DESCRIPTION	BY	CKD. BY			