

SPECIAL PURPOSE STAINLESS STEEL FLOOR SINK

DRAWING NUMBER
sSQ-9-2871-FS

SIZE
A

SCALE:
NONE

DATE:
9-10-02

APPROVED BY:
AM

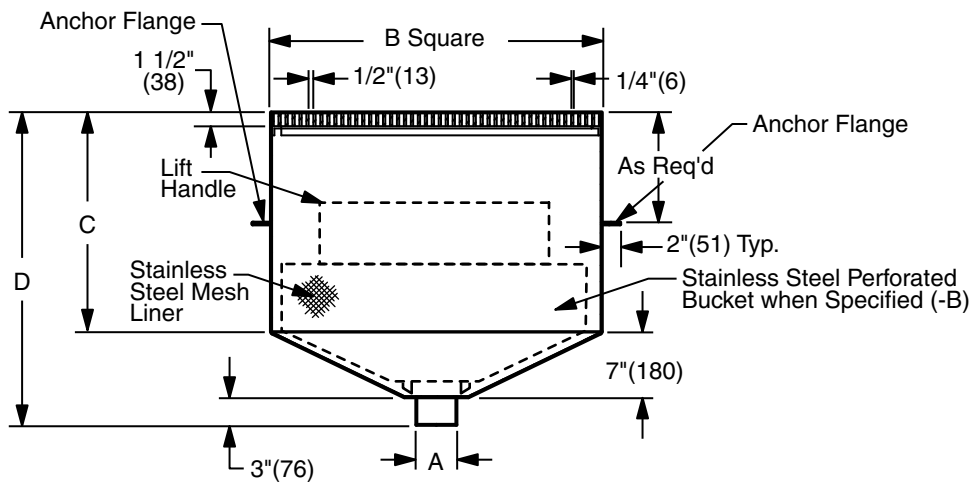
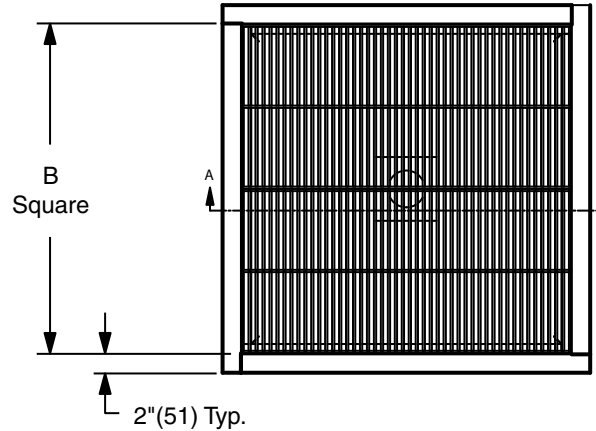
CHECKED BY:
JMC

DRAWN BY:
RN

SQ-9-2871-FS

FIGURE NUMBER

WE CAN ASSUME NO RESPONSIBILITY FOR USE OF SUPERSEDED OR VOID DATA



A(Pipe Size) = 02(50), 03(75), 04(100), 06(150) (SCH. 5 BW)

SECTION A-A

FIGURE NUMBER	B	C	D	MAX CONTAINMENT CAPACITY IN GALLONS
SQ-9-2871W-FS1	1'-0"(305)	1'-0"(305)	2'-0"(610)	5 (19/L)
SQ-9-2871W-FS2	1'-6"(455)	2'-0"(610)	2'-10"(865)	25 (94/L)
SQ-9-2871W-FS3	2'-0"(610)	2'-0"(610)	2'-10"(865)	50 (189/L)
SQ-9-2871W-FS4	2'-6"(760)	2'-0"(610)	2'-10"(865)	80 (303/L)

REGULARLY FURNISHED:
 Fabricated 304 Stainless Steel Floor Sink With Anchor Flange and Extra Heavy Duty Bar Grate.

VARIATIONS:

- Stainless Steel Perforated Bucket With Stainless Steel Mesh Liner and Lift Handle. (-B)
- Unit Constructed From Type 316 Stainless Steel.

REV.	DATE	DESCRIPTION	BY	CKD.

WEIGHT POUNDS	VOLUME CUBIC FEET	FIGURE NUMBER SQ-9-2871-FS
---------------	-------------------	--------------------------------------