



JAY R. SMITH MFG. CO.
 DIVISION OF SMITH INDUSTRIES, INC.
 POST OFFICE BOX 3237
 MONTGOMERY, ALABAMA 36109-0237 (USA)
 TEL: 334-277-8520 FAX: 334-272-7396 www.jrsmith.com



LOCATION

RICE INTERCEPTOR

DRAWING NUMBER
SQ-8-6022

SIZE
A

SCALE:
NONE

DATE:
2-3-98

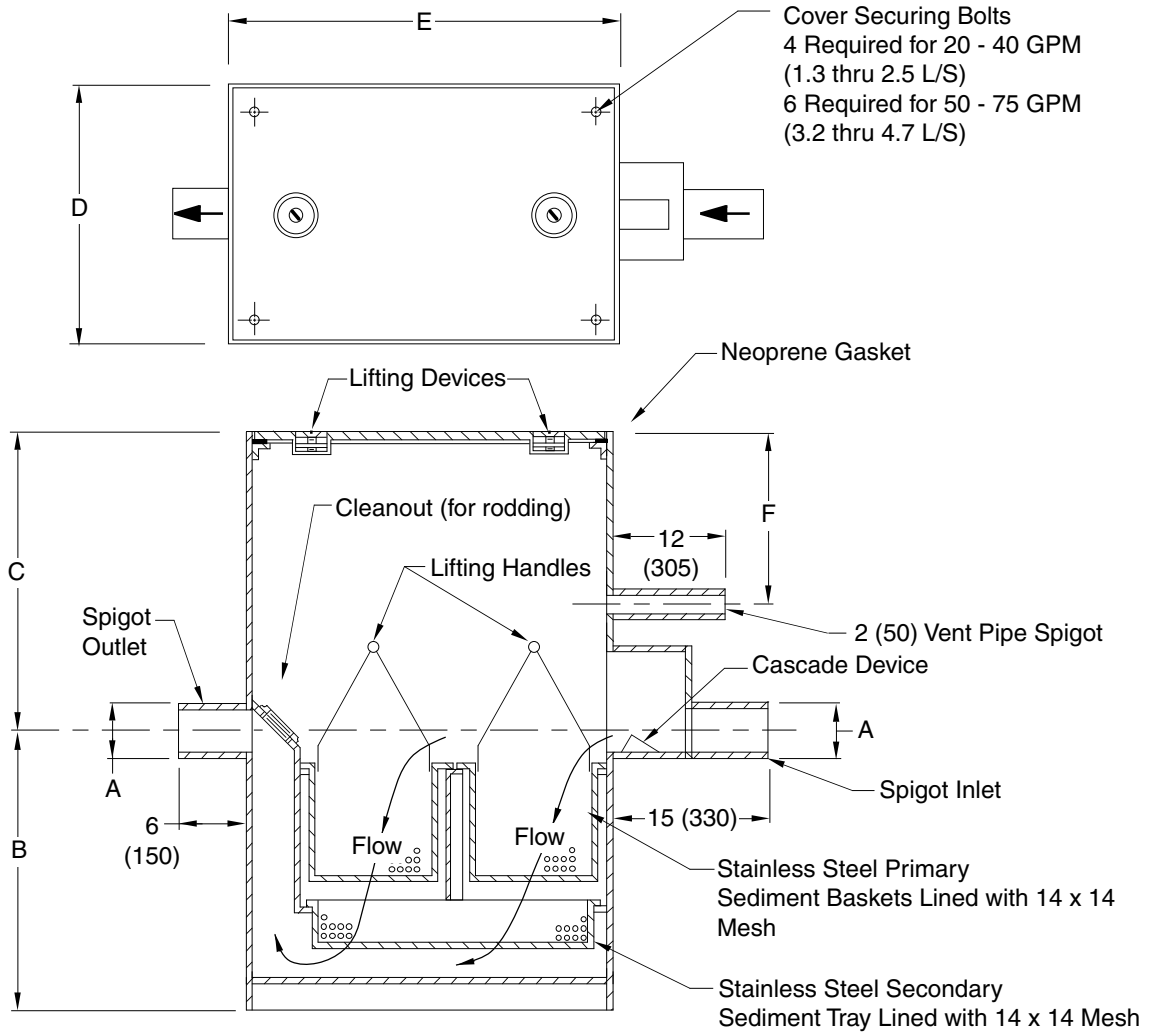
APPROVED BY:
Chuck S

CHECKED BY:
JCS

DRAWN BY:
EMB

WE CAN ASSUME NO RESPONSIBILITY FOR USE OF SUPERSEDED OR VOID DATA

DIMENSIONS ARE SUBJECT TO MANUFACTURERS TOLERANCE AND CHANGE WITHOUT NOTICE



Cover Securing Bolts
 4 Required for 20 - 40 GPM
 (1.3 thru 2.5 L/S)
 6 Required for 50 - 75 GPM
 (3.2 thru 4.7 L/S)

Fig. No.	Flow Rate		Inlet & Outlet (Pipe Size)	Roughing Dimensions				
	GPM	L/S		A	B	C	Width D	Length E
-20	20	1.3	03 (80)	24 (610)	16 (405)	20 (510)	26 (660)	7 (180)
-30	30	1.9	04 (100)	24 (610)	16 (405)	20 (510)	33 (840)	7 (180)
-40	40	2.5	04 (100)	30 (760)	22 (560)	24 (610)	36 (915)	7 (180)
-50	50	3.2	04 (100)	32 (815)	24 (610)	30 (760)	42 (1065)	7 (180)
-75	75	4.7	06 (150)	36 (915)	28 (710)	36 (915)	48 (1220)	7 (180)

REGULARLY FURNISHED:

Fabricated Steel with Gray Duco Coating,
 Complete with Stainless Steel Primary Sediment
 Baskets, Stainless Steel Secondary Sediment
 Tray, Spigot Inlet and Outlet and Secured
 Gasketed Cover with Lifting Devices.

VARIATIONS:

- All Stainless Steel Unit -SS
- T Threaded Inlet and Outlet Connections

NOTE: Dimensions shown in
 parentheses are in millimeters.

SQ-8-6022

FIGURE
NUMBER

REV.	DATE	DESCRIPTION	BY	CKD. BY

WEIGHT
POUNDS

VOLUME
CUBIC FEET

FIGURE NUMBER

SQ-8-6022