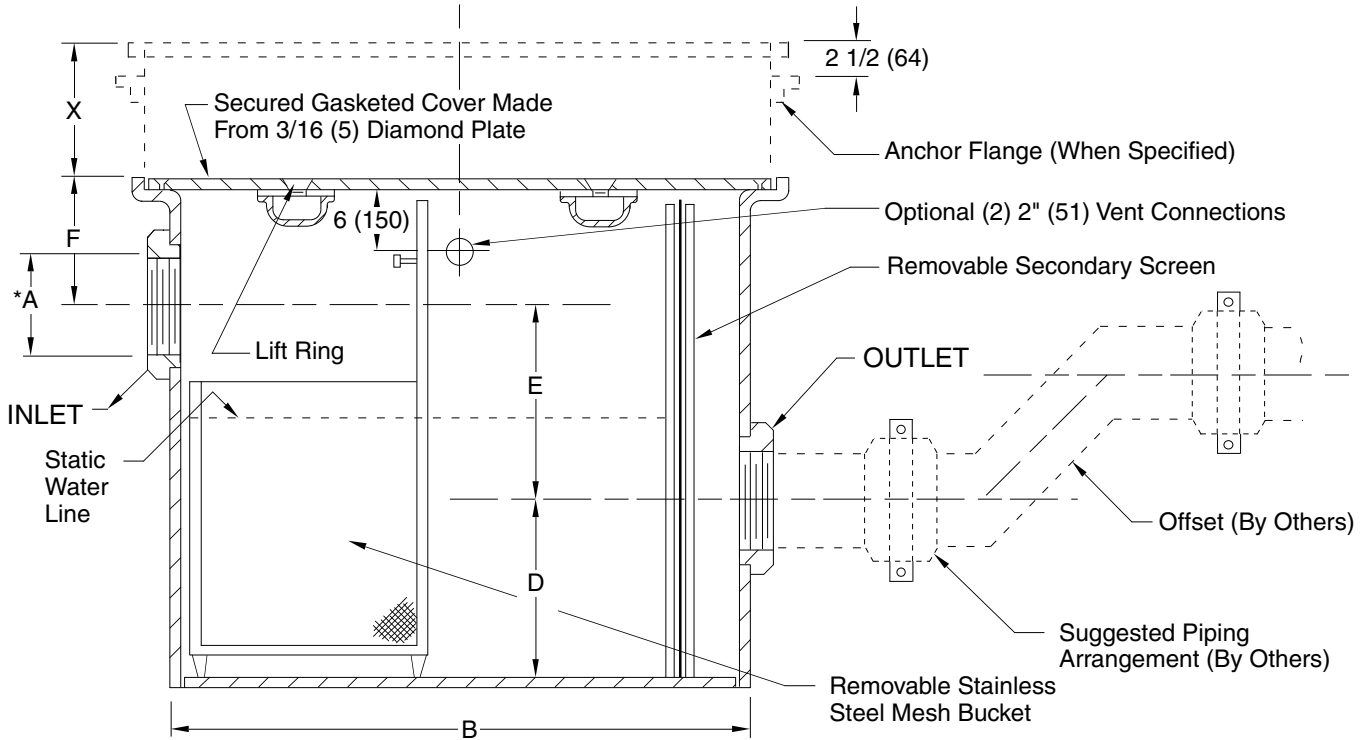


LARGE ANIMAL FUR/HAIR INTERCEPTORS

FUNCTION: Installed in waste line serving a kennel grooming area to intercept animal fur/hair to eliminated potential stoppage.



C = Body Width
 X = Specify Additional Height Required

NOTE: It is the responsibility of the installer to check all parts (internal and external) to verify they are in their proper operating order and location.

Fig. No.	GPM Flow Rate	* Inlet & Outlet Size	Dimensions					Securing Screws In Cover
			Body		Roughing Dimensions			
			Length	Width	D	E	F	
SQ-8-2180	10	03 (75)	20 (510)	24 (610)	12 (305)	12 (305)	8 (205)	8
SQ-8-2180	20	03 (75)	30 (760)	24 (610)	12 (305)	12 (305)	8 (205)	8
SQ-8-2180	25	04 (100)	36 (915)	24 (610)	12 (305)	12 (305)	8 (205)	8
SQ-8-2180	50	04 (100)	40(1015)	26 (660)	12 (305)	12 (305)	8 (205)	10

*Specify larger or smaller inlets/outlets as required.

NOTE: Dimensions shown in parentheses are in millimeters.

REGULARLY FURNISHED:

Fabricated Steel with Gray Duco Coating and Stainless Steel Mesh Bucket, Stainless Steel Secondary Screen, 3/16" (5) Diamond Plate Cover (Secured & Gasketed) and Threaded Inlet and Outlet.

VARIATIONS;

- All Stainless Steel Unit -SS
- Anchor Flange -F
- Extension -E Specify height eg: -E06 for 6"(150) Ext
- Flashing Flange with Flashing Clamp -F-C
- NO-HUB Inlet & Outlet Connection
- Option (2) 2" (51) Threaded Vent Connections - VC

DRAWING NUMBER
SSQ-8-2180

SIZE
A

SCALE:
NONE

DATE:
8-30-98

APPROVED BY:
McD

CHECKED BY:
JM

DRAWN BY:
CMD

FIGURE NUMBER
SQ-8-2180

WE CAN ASSUME NO RESPONSIBILITY FOR USE OF SUPERSEDED OR VOID DATA

DIMENSIONS ARE SUBJECT TO MANUFACTURERS TOLERANCE AND CHANGE WITHOUT NOTICE

REV.	DATE	DESCRIPTION	BY	CKD. BY

WEIGHT POUNDS	VOLUME CUBIC FEET	FIGURE NUMBER
		SQ-8-2180