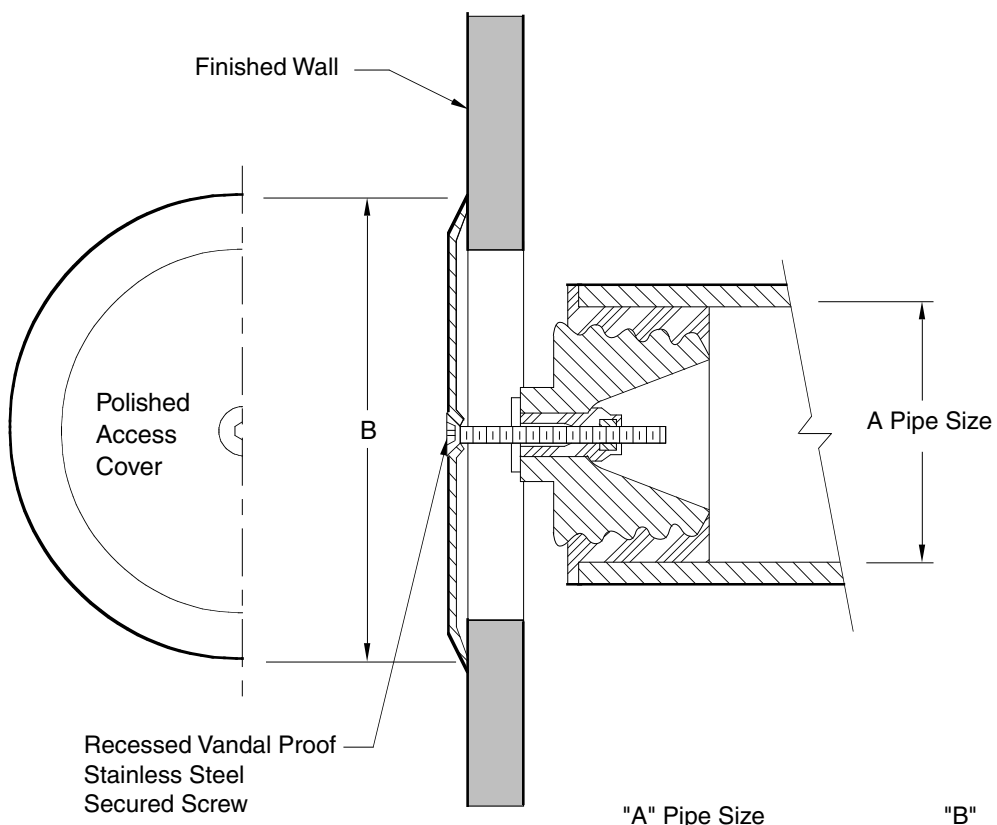


ROUND POLISHED STAINLESS STEEL WALL COVER PLATE AND GAS TIGHT CLOSURE

FUNCTION: Recommended for use as a cleanout where a wall access plate is required.



"A" Pipe Size 1 1/2(38) or 2"(50) 3"(75) or 4"(100)	"B" 4 1/4(110) DIA 7"(180) DIA
--	---

NOTE: Dimensions shown in parentheses are in millimeters.

REGULARLY FURNISHED:
 Tapered Plug, Threaded Brass Insert, Urethane Rubber Seal, Complete with Polished Stainless Steel Access Cover and Stainless Steel Vandalproof Screw.

DRAWING NUMBER **SSQ-4-1819**
 SIZE **A**
 SCALE: **NONE**
 DATE: **12-7-95**
 APPROVED BY: **CS**
 CHECKED BY: **JCS**
 DRAWN BY: **EMB**
SQ-4-1819
 FIGURE NUMBER

WE CAN ASSUME NO RESPONSIBILITY FOR USE OF SUPERSEDED OR VOID DATA
 DIMENSIONS ARE SUBJECT TO MANUFACTURERS TOLERANCE AND CHANGE WITHOUT NOTICE

B	1-18-02	Chg'd Title & (mm)	RN	JCS	WEIGHT POUNDS	VOLUME CUBIC FEET	FIGURE NUMBER
A	2-2-98	Chg'd Title	EMB	JCS			SQ-4-1819
REV.	DATE	DESCRIPTION	BY	CKD. BY			