



JAY R. SMITH MFG. CO.
 DIVISION OF SMITH INDUSTRIES, INC.
 POST OFFICE BOX 3237
 MONTGOMERY, ALABAMA 36109-0237 (USA)
 TEL: 334-277-8520 FAX: 334-272-7396 www.jrsmith.com

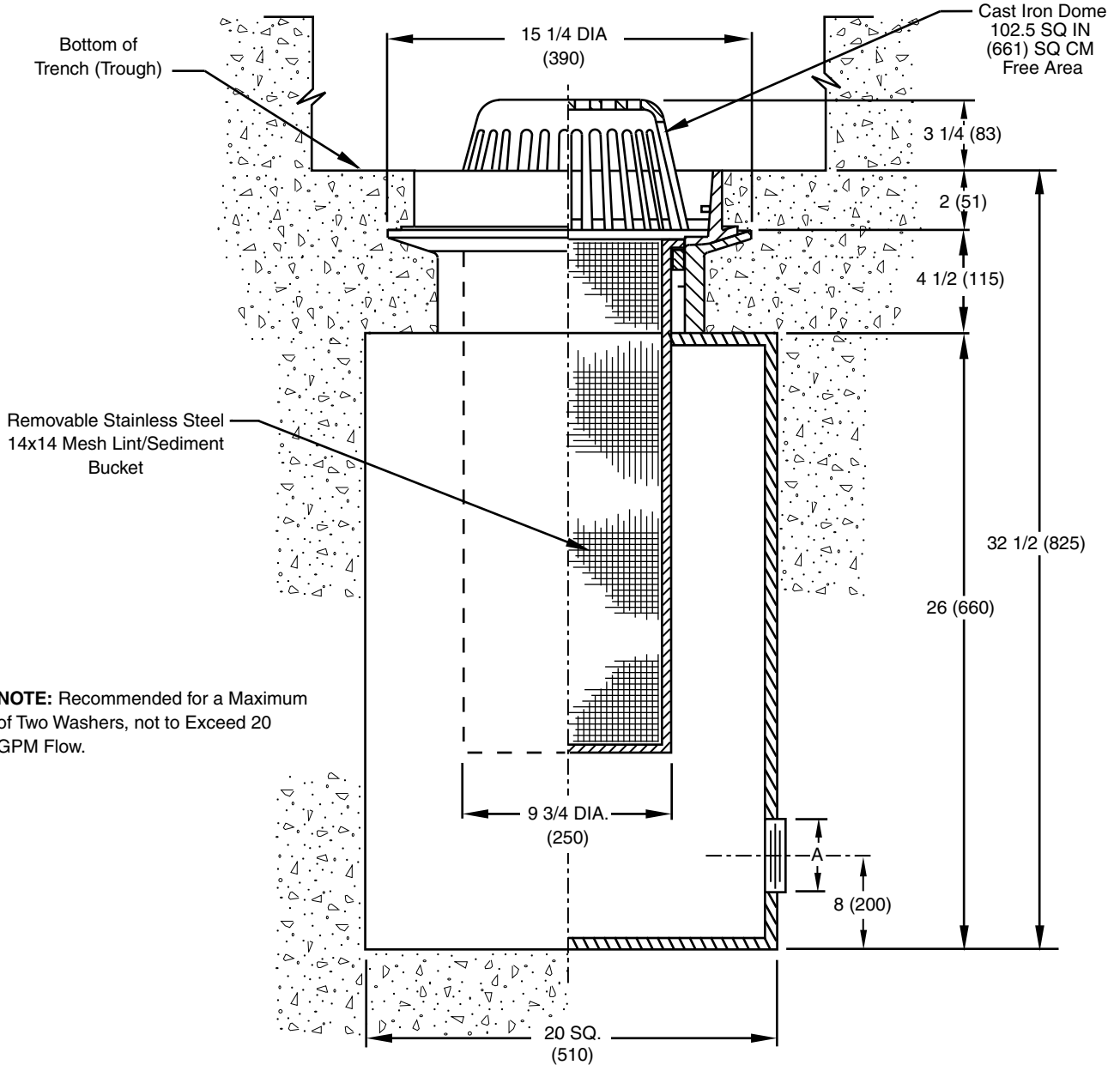


MEMBER OF:

LOCATION

LAUNDRY TRENCH (TROUGH) DRAIN & LINT INTERCEPTOR

FUNCTION: Used at low end of laundry trench (trough) for drainage & lint interception.



NOTE: Recommended for a Maximum of Two Washers, not to Exceed 20 GPM Flow.

"A" (Pipe Size) = 02 (50), 03 (75) or 04 (100)

Fig. SQ-2-3088T.....Threaded Outlet

REGULARLY FURNISHED:

Duco Coated Fabricated Steel Drain Body with Removable Cast Iron Dome, Cast Iron Clamping Collar and Removable Stainless Steel 14x14 Mesh Lint/Sediment Bucket with Lifting Handle.

VARIATIONS:

- Y NO-Hub Outlet
- C Caulk Outlet

OPTIONAL MATERIALS:

- Type 304 Stainless Steel Body
- Galvanized Coated

DRAWING NUMBER
SQ-2-3088

SIZE
A

SCALE:
NONE

DATE:
3-19-03

APPROVED BY:
JM

CHECKED BY:
CL

DRAWN BY:
RN

FIGURE NUMBER
SQ-2-3088

WE CAN ASSUME NO RESPONSIBILITY FOR USE OF SUPERSEDED OR VOID DATA

B	11-3-03	Add Pipe Size	RN	CL
A	7-9-03	Add Trough	RN	McD
REV.	DATE	DESCRIPTION	BY	CKD. BY

WEIGHT POUNDS	VOLUME CUBIC FEET

FIGURE NUMBER SQ-2-3088
