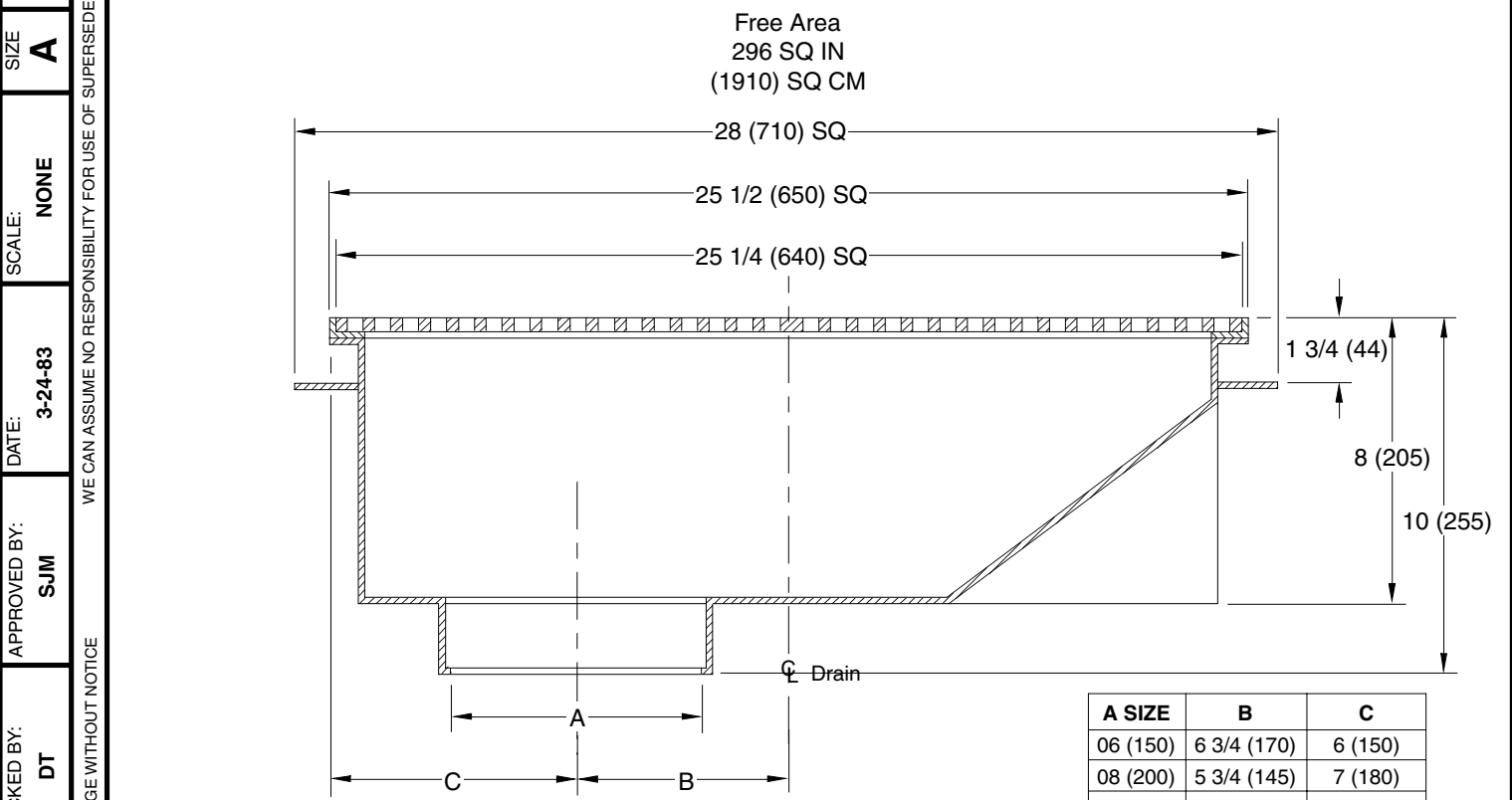


# SPECIAL PURPOSE DRAINS

**LARGE CAPACITY - BOTTOM OUTLET**

**FUNCTION:** When large grate free area is required for accelerated drainage. Shallow body with offset outlet and flange permits installation in unique construction situations.



A SIZE	B	C
06 (150)	6 3/4 (170)	6 (150)
08 (200)	5 3/4 (145)	7 (180)
10 (255)	4 1/2 (115)	8 1/4 (210)
12 (305)	3 1/2 (89)	9 1/4 (235)

- Fig. 6060C . . . CAULK OUTLET ONLY
- REGULARLY FURNISHED:**  
 Fabricated Stainless Steel Body and Frame with Chrome Plated Bronze Loose Set Grates.
- VARIATIONS:**
- Flashing Clamp -C
  - Secured Grates -SG
  - Secured Grates with Vandal Proof Screws -U
  - Y NO-HUB Outlet
- OPTIONAL MATERIALS:**
- Galvanized Cast Iron Grates -G
  - Galvanized Fabricated Steel Body -G
  - Polished Bronze Top -PB
  - Nickel Bronze Top -NB
  - Duco Cast Iron Grates -CI

**6060**

DIMENSIONS ARE SUBJECT TO MANUFACTURERS TOLERANCE AND CHANGE WITHOUT NOTICE

**NOTE:** This product does not conform to or meet the requirements of ASME Standard No. A112.19.8-2007, titled "Suction Fittings for Use in Swimming Pools, Wading Pools, Spas, and Hot Tubs." This product shall not be used in any installation in swimming pools, wading pools, spas, hot tubs as well as other aquatic facilities. Due to the potential endangerment from arduous and forceful suction, entrapment or entanglement regardless of whether it is hair, head, limbs or other body parts, this product is prohibited from installation in these applications.

**NOTE:** Dimensions shown in parentheses are in millimeters.

<b>J</b>	12/08/08	Revised Variations	<b>RN</b>	<b>CL</b>	<b>WEIGHT</b> POUNDS	<b>VOLUME</b> CUBIC FEET	<b>FIGURE NUMBER</b>  <b>6060</b>
<b>H</b>	11/20/08	Added ASME Note	<b>JJ</b>	<b>CL</b>			
<b>G</b>	5-15-98	Submittal Update	<b>ASL</b>	<b>BS</b>			
<b>F</b>	1-31-97	Chg'd Reg Furn & Opt Mat	<b>EMB</b>	<b>BS</b>			
REV.	DATE	DESCRIPTION	BY	CKD. BY			