

H



JAY R. SMITH MFG. CO.
 DIVISION OF SMITH INDUSTRIES, INC.
 POST OFFICE BOX 3237
 MONTGOMERY, ALABAMA 36109-0237 (USA)
 TEL: 334-277-8520 FAX: 334-272-7396 www.jrsmith.com



MEMBER OF:

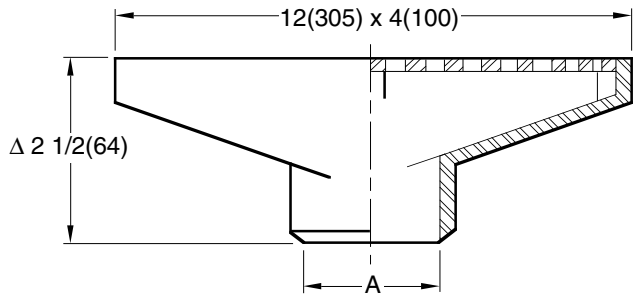
LOCATION

SPECIAL PURPOSE DRAINS STAINLESS STEEL - CARBON STEEL

GUTTER DRAIN

FUNCTION: Used in gutters or other areas where a rectangular top is desired.

Free Area
 11.50 SQ IN
 (74) SQ CM



A (Pipe Size) = 02(50), 03(75)

Fig. 9745BW . . . BUTT WELD OUTLET
 Schedule 40 Regularly Furnished

Δadd 1/8"(3) for nickel bronze frame and grate.

REGULARLY FURNISHED:
 CF8 (Equivalent to Type 304)
 Rough Finished Stainless Steel
 Body and Secured Stainless
 Steel Grate.

VARIATIONS:
 BW Butt Weld Outlet
 (Specify Schedule -S05, -S10or -S40)

OPTIONAL MATERIALS:
 A-27 Carbon Steel -A27
 CF8M (Equivalent to Type 316)
 Stainless Steel -316

NOTE: Dimensions shown in parentheses are in millimeters.

DRAWING NUMBER
9745

SIZE
A

SCALE:
NONE

DATE:
11-12-84

APPROVED BY:
TD

CHECKED BY:
VGD

DRAWN BY:
PJ

9745

WE CAN ASSUME NO RESPONSIBILITY FOR USE OF SUPERSEDED OR VOID DATA
 DIMENSIONS ARE SUBJECT TO MANUFACTURERS TOLERANCE AND CHANGE WITHOUT NOTICE

H G F E	4-28-06 04/24/00 5-22-97 2-12-97	Revised Variations Changed Metric Equivalents Rev Var & Opt Mat Revised Note	RN JJ EMB EMB	CL BS BS SB	WEIGHT POUNDS	VOLUME CUBIC FEET	FIGURE NUMBER 9745
REV.	DATE	DESCRIPTION	BY	CKD. BY			