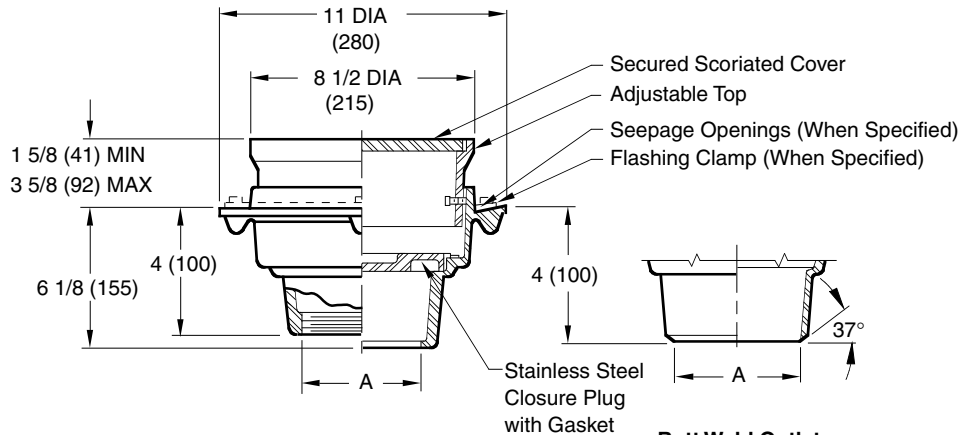


CLEANOUT STAINLESS STEEL - CARBON STEEL

8 1/2" (215) ROUND ADJUSTABLE TOP SOLID SCORIATED COVER AND CLOSURE PLUG

FUNCTION: Used in floors where a solid cover and internal gasketed closure plug are required. Internal plug prevents sewer gas from escaping into building. Adjustable top collar permits accurate position of top cover to meet finished floor.



A (Pipe Size) = 02(50), 03(75) or 04(100)

Schedule 40 Regularly Furnished

Fig. 9735C CAULK OUTLET
 Fig. 9735T THREADED OUTLET

REGULARLY FURNISHED:

CF8 (Equivalent to Type 304) Rough Finish Stainless Steel Body, Adjustable Top, Secured Scoriated Cover and Gasketed Stainless Steel Closure Plug.

VARIATIONS:

- 4" (100) Extension -E04
- Plastic Closure Plug and Gasket -XPP
- Closure Plug with 3/4" (19) Test Plug -TP (Specify Material)
- Flashing Clamp with Seepage Holes -C
- Satin Finish Top -SF
- Seepage Holes -WSH
- Vandal Proof Cover -U
- 90° Side Outlet (Specify Fig 9759)
- BW Butt Weld Outlet (Specify Schedule -S05, -S10 or -S40)

OPTIONAL MATERIALS:

- A-27 Carbon Steel -A27
- CF8M (Equivalent to Type 316) Stainless Steel -316

Design Pressures and Temperatures

1. With proper outlet connection, shall be watertight up to 10 ft. of water column (4.34 psig).
2. When exposed to effluent appropriate for drain material, the drain shall withstand effluent temperatures of 180 degrees F at ambient pressure.

NOTE: Dimensions shown in parentheses are in millimeters.

DRAWING NUMBER
S9735

SIZE
A

SCALE:
NONE

DATE:
11-12-84

APPROVED BY:
TD

CHECKED BY:
VG

DRAWN BY:
PJ

9735

WE CAN ASSUME NO RESPONSIBILITY FOR USE OF SUPERSEDED OR VOID DATA

DIMENSIONS ARE SUBJECT TO MANUFACTURERS TOLERANCE AND CHANGE WITHOUT NOTICE

H G F E	10-17-11 9-30-09 4-28-06 3-2-06	Added Note Revised Drawing Revised Variations Changed Variations	TBW RN RN RN	CL CL CL CL	WEIGHT POUNDS	VOLUME CUBIC FEET	FIGURE NUMBER 9735
REV.	DATE	DESCRIPTION	BY	CKD. BY			