

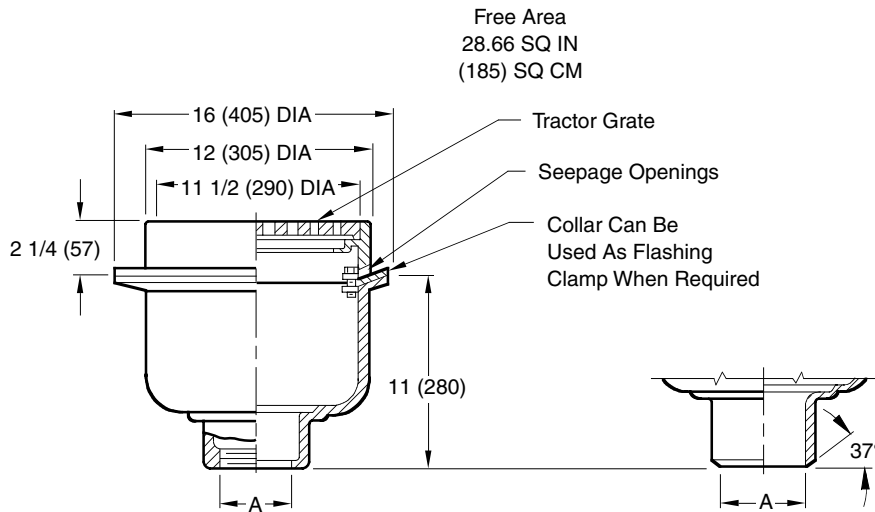


LOCATION

FLOOR DRAINS STAINLESS STEEL - CARBON STEEL

12" (305) ROUND TOP - HEAVY DUTY DRAIN WITH TRACTOR GRATE

FUNCTION: Used in heavy traffic areas. Large deep body provides reservoir where heavy flow is expected, and where a corrosion resistant drain is required.



A (Pipe Size) = 03(75), 04(100), 05(125) or 06(150)

- Fig. 9734C CAULK OUTLET
- Fig. 9734T THREADED OUTLET

Schedule 40 Regularly Furnished

REGULARLY FURNISHED:

CF8 (Equivalent to Type 304) Rough Finish Stainless Steel Body, Flashing Collar with Seepage Openings and Rough Bronze Tractor Grate.

VARIATIONS:

- 4(100) or 6"(150) Dia. Funnel (Specify Fig. 9703)
- 8 3/4(220) x 3 3/4"(95) Funnel (Specify Fig. 9704)
- Satin Finish Top -SF
- Sediment Bucket -B
- Vandal Proof Grate -U
- 90° Side Outlet (Specify Fig. 9759)
- BW Butt Weld Outlet (Specify Schedule -S05, -S10, -S40)

OPTIONAL MATERIALS:

- A-27 Carbon Steel -A27
- Cast Iron Grate -CIG
- CF8M (Equivalent to Type 316) Stainless Steel -316
- CF8 (Rough) Stainless Steel Grate -RG
- Ductile Iron Grate -M
- Nickel Bronze Top -NB
- Polished Bronze Top -PB

Design Pressures and Temperatures

1. With proper outlet connection, shall be watertight up to 10 ft. of water column (4.34 psig).
2. When exposed to effluent appropriate for drain material, the drain shall withstand effluent temperatures of 180 degrees F at ambient pressure.

NOTE: Dimensions shown in parentheses are in millimeters.

DRAWING NUMBER
S973

SIZE
A

SCALE:
NONE

DATE:
11-12-84

APPROVED BY:
TD

CHECKED BY:
VGD

DRAWN BY:
PJ

FIGURE NUMBER
9734

WE CAN ASSUME NO RESPONSIBILITY FOR USE OF SUPERSEDED OR VOID DATA

DIMENSIONS ARE SUBJECT TO MANUFACTURERS TOLERANCE AND CHANGE WITHOUT NOTICE

E	10-18-11	Added Note	TBW	CL	WEIGHT POUNDS	VOLUME CUBIC FEET	FIGURE NUMBER 9734
D	4-28-06	Revised Variations	RN	CL			
C	04/24/00	Changed Metric Equivalents	JJ	BS			
B	12-13-95	Added Millimeters	EMB	BS			
REV.	DATE	DESCRIPTION	BY	CKD. BY			