

E



JAY R. SMITH MFG. CO.
 MEMBER OF ACORN'S FAMILY OF COMPANIES
 POST OFFICE BOX 3237
 MONTGOMERY, ALABAMA 36109-0237 (USA)
 TEL: 334-277-8520 FAX: 334-272-7396 www.jrsmith.com



MEMBER OF:



LOCATION

DRAWING NUMBER
S9733

SIZE
A

SCALE:
NONE

DATE:
11-12-84

APPROVED BY:
TD

CHECKED BY:
VGD

DRAWN BY:
PJ

9733

FIGURE NUMBER

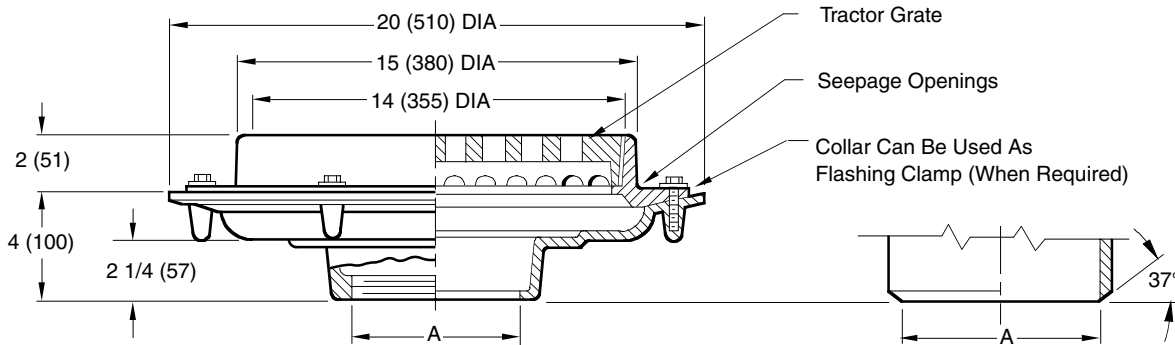
WE CAN ASSUME NO RESPONSIBILITY FOR USE OF SUPERSEDED OR VOID DATA

FLOOR DRAINS STAINLESS STEEL - CARBON STEEL

15" (380) ROUND TOP - HEAVY DUTY DRAIN WITH TRACTOR GRATE

FUNCTION: Used in areas where waste water contains no sediment or debris and construction requires a shallow body. Large top area permits use where high flow is anticipated.

Free Area
44.95 SQ IN
(290) SQ CM



A (Pipe Size) = 04(100), 05(125), 06(150) or 08(205)

- Fig. 9733C CAULK OUTLET
- Fig. 9733T THREADED OUTLET

Butt Weld Outlet

Schedule 40 Regularly Furnished

REGULARLY FURNISHED:

CF8 (Equivalent to Type 304) Rough Finish Stainless Steel Body, Flashing Collar with Seepage Openings and Tractor Grate.

VARIATIONS:

- 4(100) or 6"(150) Dia. Funnel (Specify Fig. 9703)
- 8 3/4(220) x 3 3/4"(95) Funnel (Specify Fig. 9704)
- Satin Finished Top -SF
- 90° Side Outlet (Specify Fig. 9759)
- BW Butt Weld Outlet (Specify Schedule -S05, -S10, -S40)

OPTIONAL MATERIALS:

- A-27 Carbon Steel -A27
- Cast Iron Grate -CIG
- CF8M (Equivalent to Type 316) Stainless Steel -316
- Ductile Iron Grate -M
- Nickel Bronze Top -N B
- Polished Bronze Top -P B

Design Pressures and Temperatures

1. With proper outlet connection, shall be watertight up to 10 ft. of water column (4.34 psig).
2. When exposed to effluent appropriate for drain material, the drain shall withstand effluent temperatures of 180 degrees F at ambient pressure.

NOTE: Dimensions shown in parentheses are in millimeters.

E	10-17-11	Added Note	TBW	CL	WEIGHT	VOLUME	FIGURE NUMBER
D	01/09/08	Added 2 1/4 Dimension	JJ	AM	POUNDS	CUBIC FEET	9733
C	4-28-06	Revised Variations	RN	CL			
B	04/24/00	Submittal Update	JJ	BS			
REV.	DATE	DESCRIPTION	BY	CKD. BY			