

**SMITH® JAY R. SMITH MFG. CO.®**  
 MEMBER OF ACORN'S FAMILY OF COMPANIES  
 POST OFFICE BOX 3237  
 MONTGOMERY, ALABAMA 36109-0237 (USA)  
 TEL: 334-277-8520 FAX: 334-272-7396 www.jrsmith.com



**LOCATION**

E  
 DRAWING NUMBER S9730  
 SIZE A  
 SCALE: NONE  
 DATE: 11-12-84  
 APPROVED BY: TD  
 CHECKED BY: VGD  
 DRAWN BY: PJ  
 FIGURE NUMBER 9730

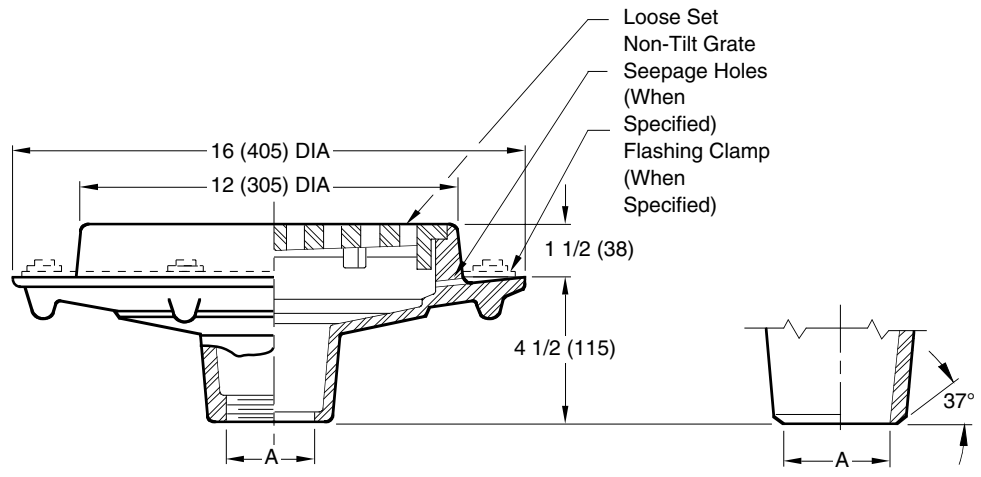
WE CAN ASSUME NO RESPONSIBILITY FOR USE OF SUPERSEDED OR VOID DATA

# FLOOR DRAINS STAINLESS STEEL - CARBON STEEL

## 12" (305) ROUND HEAVY DUTY TOP

**FUNCTION:** Used in areas where waste water contains no sediment or debris and construction requires a shallow body.

Free Area  
27.63 SQ IN  
(178) SQ CM



A (Pipe Size) = 04(100) or 06(150)

Schedule 40 Regularly Furnished

- Fig. 9730C ... CAULK OUTLET
- Fig. 9730T ... THREADED OUTLET

**REGULARLY FURNISHED:**

CF8 (Equivalent to Type 304) Rough Finish Stainless Steel Body and Loose Set Non-Tilt Grate.

**Design Pressures and Temperatures**

1. With proper outlet connection, shall be watertight up to 10 ft. of water column (4.34 psig).
2. When exposed to effluent appropriate for drain material, the drain shall withstand effluent temperatures of 180 degrees F at ambient pressure.

**VARIATIONS:**

- 4(100) or 6"(150) Dia. Funnel (Specify Fig. 9703)
- 8 3/4(220) x 3 3/4"(95) Funnel (Specify Fig. 9704)
- Closure Plug and Gasket Available in Stainless Steel -XPSS or Plastic -XPP
- Closure Plug with 3/4"(19) Test Plug (Specify Material)
- Flashing Clamp with Seepage Holes -C
- Satin Finish Top -S
- Seepage Holes -WSH
- Vandal Proof Grate -U
- 90° Side Outlet (Specify Fig. 9759)
- BW Butt Weld Outlet (Specify Schedule -S05, -S10 or -S40)

**OPTIONAL MATERIALS:**

- A-27 Carbon Steel -A27
- Cast Iron Grate -CIG
- CF8M (Equivalent to Type 316) Stainless Steel -316
- Nickel Bronze Grate -NB
- Polished Bronze Grate -PB

**NOTE:** Dimensions shown in parentheses are in millimeters.

E	10-18-11	Added Note	TBW	CL	WEIGHT	VOLUME	FIGURE NUMBER
D	5-23-06	Revised Variations	RN	CL	POUNDS	CUBIC FEET	9730
C	4-28-06	Revised Variations	RN	CL			
B	12-13-95	Added Millimeters	EMB	BS			
REV.	DATE	DESCRIPTION	BY	CKD. BY			