



JAY R. SMITH MFG. CO.
 MEMBER OF ACORN'S FAMILY OF COMPANIES
 POST OFFICE BOX 3237
 MONTGOMERY, ALABAMA 36109-0237 (USA)
 TEL: 334-277-8520 FAX: 334-272-7396 www.jrsmith.com



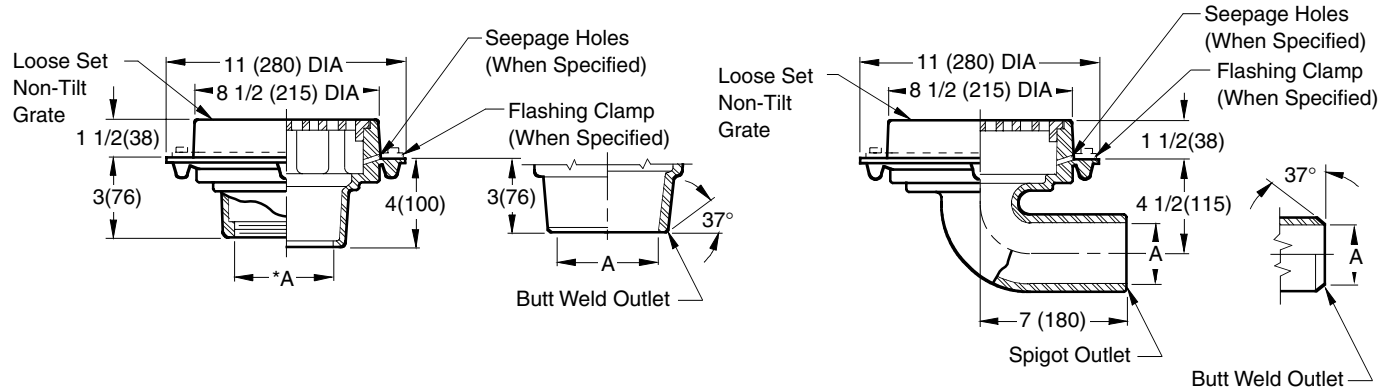
LOCATION

FLOOR DRAINS STAINLESS STEEL - CARBON STEEL

8 1/2" (215) ROUND MEDIUM DUTY TOP

FUNCTION: Used in floors where corrosive liquids must drain or be discharged. Solid top variation with closure plug allows placement of drains for future use. The advantage of stainless steel over high silicon iron is that it resists corrosive liquids, and accommodates machining for threaded outlets, secured top and/or flashing clamps. These drains are readily adaptable to most types of drain line piping materials. Type 304 stainless steel will handle a variety of corrosive wastes which are found in laboratories, chemical, atomic energy, photographic processing, dairy, breweries and bottling plants.

Free Area
 20.50 SQ IN
 (132) SQ CM



A (Pipe Size) = 02(50), 03(75), or 04(100)
 Schedule 40 Regularly Furnished

Fig. 9710C . . . CAULK OUTLET
 Fig. 9710T . . . THREADED OUTLET

Fig. 9715S . . . SPIGOT OUTLET

REGULARLY FURNISHED:

CF8 (Equivalent to Type 304) Rough Finish Stainless Steel Body, and Loose Set Non-Tilt Grate.

VARIATIONS:

- 4"(100) Extension -E04
- 4(100) or 6"(150) Dia. Funnel (Specify Fig. 9703)
- 8 3/4(220) x 3 3/4"(95) Funnel (Specify Fig. 9704)
- Closure Plug and Gasket Available in Stainless Steel -XPSS or Plastic -XPP
- Closure Plug with 3/4"(19) Test Plug -TP (Specify Material)
- Flashing Clamp with Seepage Holes -C
- Flat Bottom Strainer -FBS
- Satin Finish Top -SF
- Sediment Bucket -B
- Seepage Holes -WSH
- Solid Scoriated Cover -SC
- Vandal Proof Grate -U
- BW Butt Weld Outlet (Specify Schedule -S05, -S10, -S40)

OPTIONAL MATERIALS:

- A-27 Carbon Steel -A27
- Cast Iron Grate -CIG
- CF8M (Equivalent to Type 316) Stainless Steel -316
- Nickel Bronze Grate -NB
- Polished Bronze Grate -PB

Design Pressures and Temperatures

1. With proper outlet connection, shall be watertight up to 10 ft. of water column (4.34 psig).
2. When exposed to effluent appropriate for drain material, the drain shall withstand effluent temperatures of 180 degrees F at ambient pressure.

NOTE: Dimensions shown in parentheses are in millimeters.

DRAWING NUMBER
S9710

SIZE
A

SCALE:
NONE

DATE:
11-12-84

APPROVED BY:
T.D.

CHECKED BY:
VGD

DRAWN BY:
PJ

FIGURE NUMBER
9710, 9715

WE CAN ASSUME NO RESPONSIBILITY FOR USE OF SUPERSEDED OR VOID DATA

DIMENSIONS ARE SUBJECT TO MANUFACTURERS TOLERANCE AND CHANGE WITHOUT NOTICE

REV.	DATE	DESCRIPTION	BY	CKD. BY	WEIGHT POUNDS	VOLUME CUBIC FEET	FIGURE NUMBER
							9710, 9715