

G



**JAY R. SMITH MFG. CO.®**  
 DIVISION OF SMITH INDUSTRIES, INC.  
 POST OFFICE BOX 3237  
 MONTGOMERY, ALABAMA 36109-0237 (USA)  
 TEL: 334-277-8520 FAX: 334-272-7396 www.jrsmith.com



MEMBER OF:

LOCATION

DRAWING NUMBER  
S9502 02.03.04SIZE  
ASCALE:  
NONEDATE:  
4-1-91APPROVED BY:  
TDCHECKED BY:  
VGDDRAWN BY:  
PJ

9502

FIGURE  
NUMBERWE CAN ASSUME NO RESPONSIBILITY FOR USE OF SUPERSEDED OR VOID DATA  
DIMENSIONS ARE SUBJECT TO MANUFACTURERS TOLERANCE AND CHANGE WITHOUT NOTICE

# SMITH SPEEDI-SEAL NEOPRENE GASKET

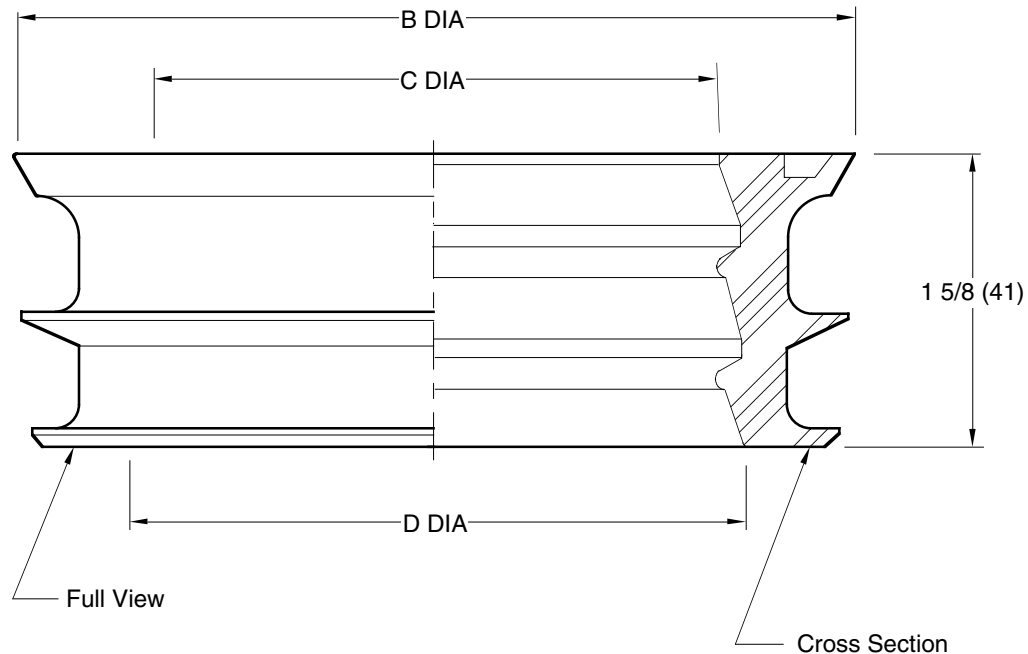


FIG. NO 9502			NOMINAL		
SIZE	PART		B	C	D
02 (50)	SW	70572-94-6	3 1/2(89)	2 3/16(56)	2 7/16(62)
02 (50)	XH	70582-94-6	3 1/2(89)	2 1/4(57)	2 1/2(64)
03(75)	SW	70573-94-6	4 5/8(117)	3 1/8(79)	3 7/16(87)
03 (75)	XH	70583-94-6	4 5/8(117)	3 5/16(84)	3 5/8(92)
04 (100)	SW	70574-94-6	5 1/2(140)	4 1/8(105)	4 7/16(113)
04 (100)	XH	70584-94-6	5 1/2(140)	4 5/16(110)	4 5/8(117)

**NOTE:** A threaded outlet with a plastic adaptor in lieu of the Speedi-Seal connection is recommended when plastic pipe is used in conjunction with roof drains.

**NOTE:** Use an adhesive lubricant with plastic pipe.

SW = SERVICE WEIGHT PIPE

XH = EXTRA HEAVY AND PLASTIC PIPE

MATERIALS: NEOPRENE PER ASTM - C564-85

**WHERE USED:** For use with Smith "Inside Caulk" Drains and Speedi-Set Cleanouts.

**NOTE:** Dimensions shown in parentheses are in millimeters.

**02(50), 03(75) and 04"(100) Sizes**

WEIGHT  
POUNDSVOLUME  
CUBIC FEET

FIGURE NUMBER

9502

G  
T  
E04/17/00  
12-5-95  
1-30-95Changed Metric Equivalents  
Added Millimeters  
Submittal UpdateJJ  
EMB  
EMBBS  
BS  
BS

REV.

DATE

DESCRIPTION

BY

CKD. BY