

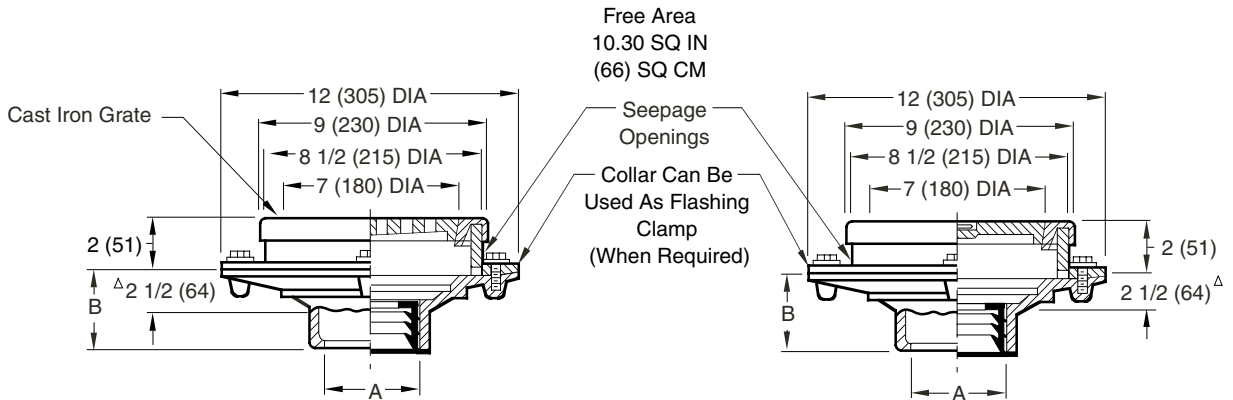


LOCATION

# FLOOR DRAINS

## DECONTAMINATION DRAINS

**FUNCTION:** Used in areas where hazardous or otherwise contaminated waste is present. Consists of two individual drains. Slotted grate drain permits drainage of contaminated waste to a separate storage tank, while the adjacent drain connected to the sewer is covered by a solid ground joint plug, thus preventing contaminated waste from entering the sewer system. Switching the solid cover and grate will allow washed down decontaminated waste to be directed to the sewer without entering the contaminated waste storage tank.

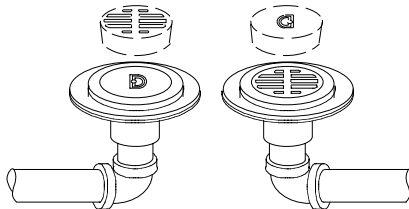


- Fig. 9205C ..... CAULK OUTLET
- Fig. 9205Y ..... NO-HUB OUTLET

A SIZE	02(50), 03(80) & 04(100)
B	3 3/4 (95) for Caulk, NO-HUB and Speedi-Set. 2 (51) for Threaded

**NOTE:** Dimensions shown in parentheses are in millimeters.

Δ This dimension to Internal Stop of Speedi-Set Gasket



**TYPICAL INSTALLATION**  
 Drains are located close to each other for ease of switching grate and plug.

**REGULARLY FURNISHED:**  
 Two (2) Duco Cast Iron Bodies with Flashing Collar and Bronze Rim. Cast Iron Grate and Ground Joint Plug.

- VARIATIONS:**
- Engraved in Rims "SANITARY" and "CONTAMINATED"
  - L Speedi-Set Service Weight
  - LXH Speedi-Set Extra Heavy
  - T Threaded Outlet

- OPTIONAL MATERIALS:**
- Acid Resistant Coated -ARC
  - Bronze Grate and Plug -RB
  - Galvanized Cast Iron -G

DRAWING NUMBER  
S9205

SIZE  
A

SCALE:  
NONE

DATE:  
8-12-93

APPROVED BY:

CHECKED BY:

DRAWN BY:  
TWK

FIGURE NUMBER  
9205

WE CAN ASSUME NO RESPONSIBILITY FOR USE OF SUPERSEDED OR VOID DATA

REV.	DATE	DESCRIPTION	BY	CKD. BY
E D C B	9-16-96 7-10-95 9-13-94 9-9-93	Removed Heavy Duty Tractor Added Millimeters Submittal Update Rev Drawing	EMB EMB CMB TWK	CL BS BS JCS

WEIGHT POUNDS	VOLUME CUBIC FEET

FIGURE NUMBER  
**9205**