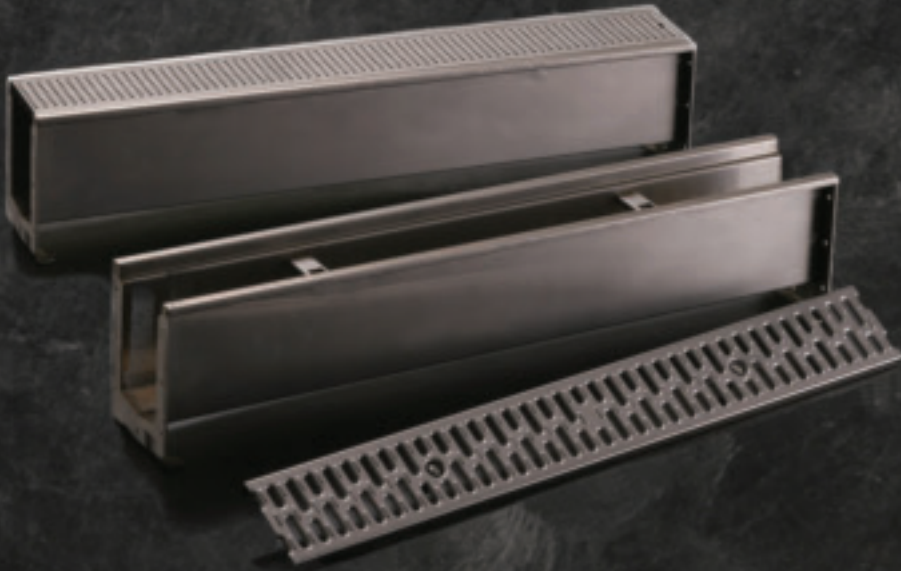


Jay R. Smith Mfg. Co.® Stainless Steel

6" Wide Modular Trench Drain System - Figure #9660



There is scarcely a material in existence that has found its way to so many applications as stainless steel. The 9660 Modular Stainless Steel Trench Drain Series is perfect for facilities where hygienics, corrosion resistance, and visibility are inherent. The system is comprised of 23 modular channel sections made of 16 gauge, type 304 stainless steel. A variety of stainless steel grates are available for light duty and heavy duty applications.



FEATURES AND BENEFITS:

- 1 Meter Channel Sections, 39.38" long and 6.38" wide
- 4" Wide Throat with Bolting End Plates
- 23 Modular Channel Sections Made of 16 Gauge, type 304 Stainless Steel
- 4 Neutral (Flat) Channels and 15 Channels with .6% Build-in Slope
- Channel Inverts Range from 3.75" to 7.50"
- Regularly Furnished with Secure Light Duty 9870-450-SS Slotted Stainless Steel Grate
- 4" No-Hub Vertical Outlet on Channel Sections 2, 5, 10, and 15
- End Outlet Plates Available in 2", 3" and 4" No-Hub
- Available with Flashing Flange and Flashing Collar
- A Variety of Stainless Steel Grates Available

APPLICATIONS:

- Bottling Plants
- Commercial Kitchens
- Food Handling (Restaurants, Cafeterias)
- Breweries
- Dairy
- Food Processing

ENGINEERING SPECIFICATION:

Jay R. Smith Mfg. Co.® stainless steel trench drain channels shall be 39.38" long, 6.38" wide, and have a 4" wide throat with bolting end plates. 23 modular channel sections shall be made of 16 gauge type 304 stainless steel. Channels shall be provided either neutral (flat) or with a .6% preslope. Channels shall be available with inverts ranging from 3.75" to 7.50". Regularly furnished with secured light duty 9870-450-SS slotted stainless steel grate and 4" no-hub vertical outlet on channel sections 2, 5, 10 and 15. End outlet plates are available in 2", 3", and 4" no-hub, see table for channel selection. Trench drain shall be Jay R. Smith Mfg. Co.® figure number 9660 series.

Smith Stainless Steel Modular Trench Drain Systems

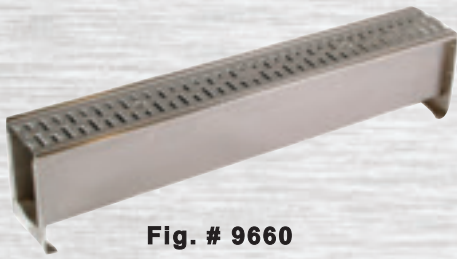


Fig. # 9660

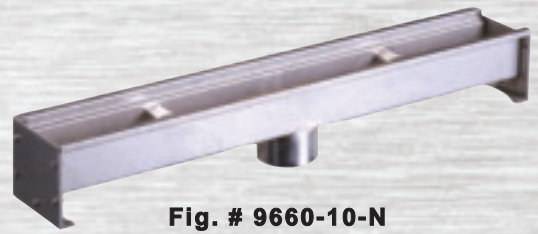
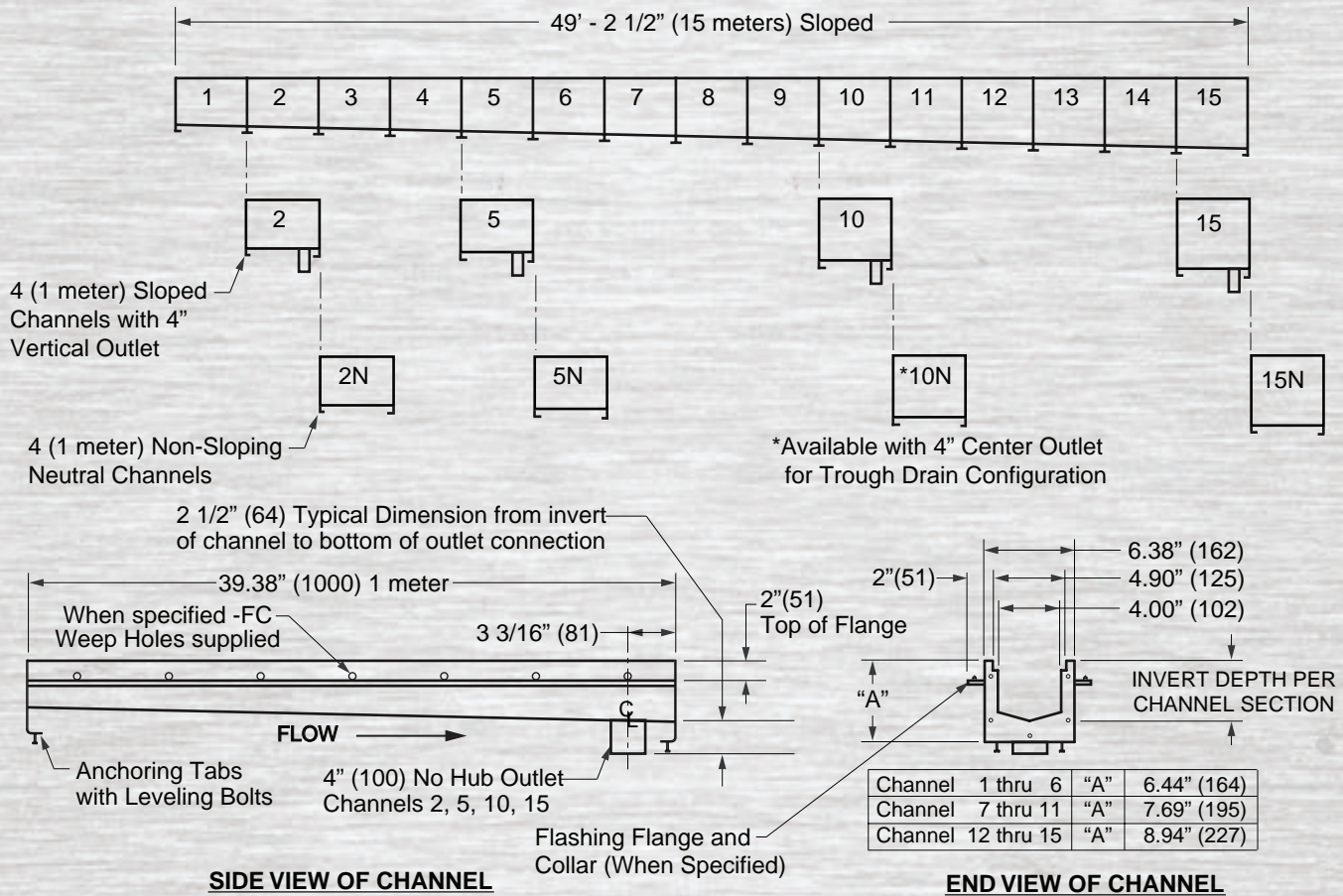


Fig. # 9660-10-N
(Used as neutral or as Trough Drain)



SIDE VIEW OF CHANNEL

END VIEW OF CHANNEL



Stainless Steel Grate Options:

- 9870-445-SSADA, ADA Stainless Steel
- 9870-450-SS, Slotted Stainless Steel
- * 9870-455-SSHD, Slotted Stainless Steel
- 9870-451-SSPA, Perforated Stainless Steel
- * 9870-430-SSM, Mesh Stainless Steel
- * 9870-465-SSP, Perforated Stainless Steel

Regularly Furnished with Secured Stainless Steel 9870-450-SS grate

*** Heavy Duty (Commercial Pneumatic Tire Traffic Patterns, Forklift, and Tractor Trailer). All other grates are light duty**

Not Shown: 9876-466-SBG, Stainless Steel Bar Grate (Available in type 316SS)

www.jrsmith.com



JAY R. SMITH MFG. CO.
DIVISION OF SMITH INDUSTRIES, INC.
POST OFFICE BOX 3237
MONTGOMERY, ALABAMA 36109-0237 (USA)
TEL: 334-277-8520 FAX: 334-272-7396 www.jrsmith.com

