



**JAY R. SMITH MFG. CO.**  
 DIVISION OF SMITH INDUSTRIES, INC.  
 POST OFFICE BOX 3237  
 MONTGOMERY, ALABAMA 36109-0237 (USA)  
 TEL: 334-277-8520 FAX: 334-272-7396  
 www.JRSmith.com



**LOCATION**

# SANI-CEPTOR® ACID RESISTANT COATED FLOOR & INDIRECT WASTE DRAINS

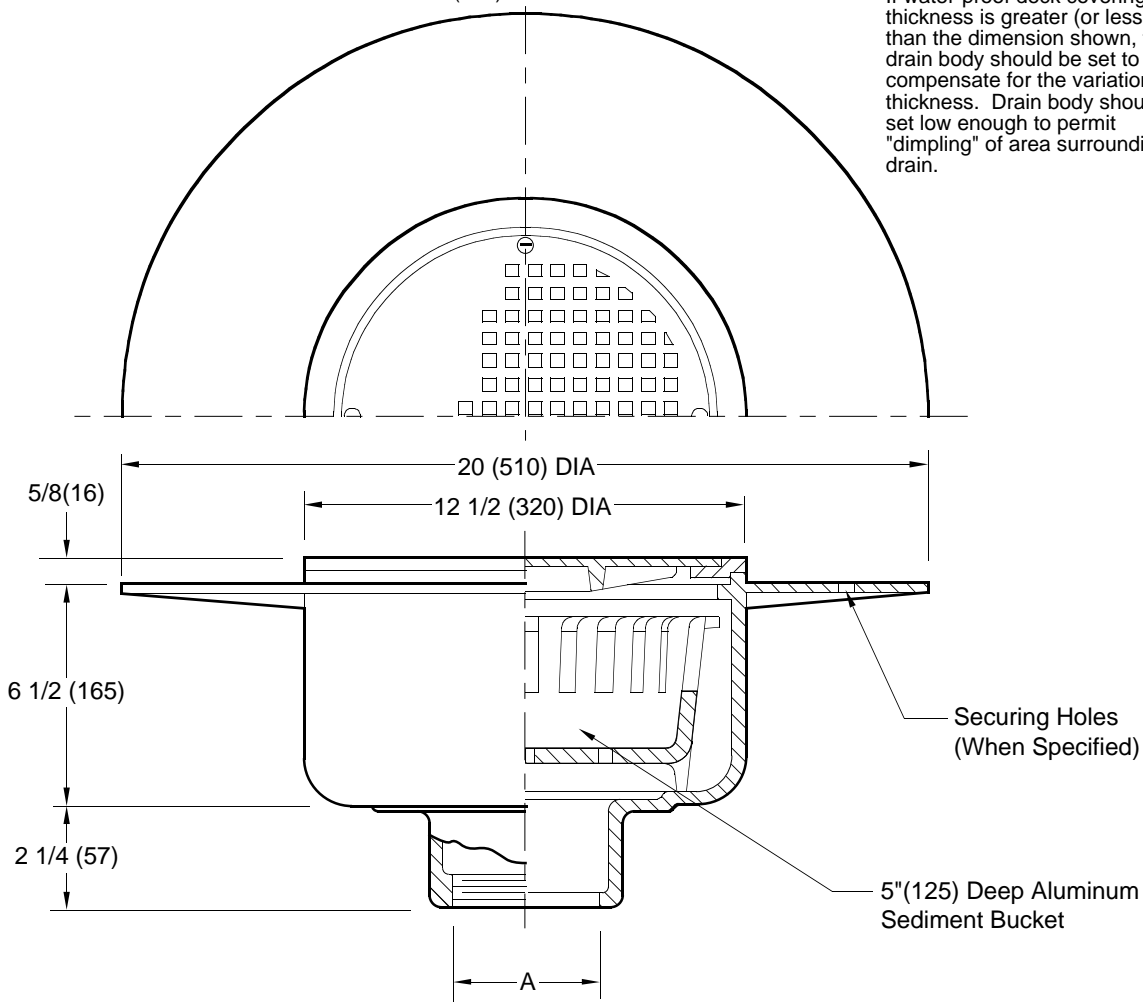
## ROUND NICKEL BRONZE TOP WIDE FLANGE SANITARY FLOOR DRAIN

**FUNCTION:** Used in kitchen areas where waterproof traffic floor coverings are applied. The acid resistant coated interior makes it ideal for kitchens, hospitals and schools.

Free Area  
 30 SQ IN  
 (194) SQ CM

**IMPORTANT INSTALLATION NOTE**

If water-proof deck covering thickness is greater (or less) than the dimension shown, the drain body should be set to compensate for the variation in thickness. Drain body should be set low enough to permit "dimpling" of area surrounding drain.



Securing Holes (When Specified)

5"(125) Deep Aluminum Sediment Bucket

A (Pipe Size) = 02(50), 03(80), 04(100), 05(125) or 06(150)

- Fig. DX3068C . . . . CAULK OUTLET
- Fig. DX3068T . . . . THREADED OUTLET

**REGULARLY FURNISHED:**  
 Cast Iron Body with Acid Resistant Coated Interior and Nickel Bronze Top with Sediment Bucket.

- VARIATIONS:**
- Less Bucket and Grate -LGB
  - Securing Holes -SH
  - Vandal Proof Grate -U
  - NO-HUB Adaptor (Specify Fig. 2646Y)

- OPTIONAL MATERIALS:**
- Polished Bronze Top -PB

**NOTE:** Dimensions shown in parentheses are in millimeters.

DRAWING NUMBER SDX3068  
 SIZE A  
 SCALE: NONE  
 DATE: 9-19-85  
 APPROVED BY: SJM  
 CHECKED BY: JD  
 DRAWN BY: PJ  
 FIGURE NUMBER DX3068  
 DIMENSIONS ARE SUBJECT TO MANUFACTURERS TOLERANCE AND CHANGE WITHOUT NOTICE  
 WE CAN ASSUME NO RESPONSIBILITY FOR USE OF SUPERSEDED OR VOID DATA

REV.	DATE	DESCRIPTION	BY	CKD. BY	WEIGHT POUNDS	VOLUME CUBIC FEET	FIGURE NUMBER
C	9-4-96	Added Millimeters	EMB				<b>DX3068</b>
B	7-12-94	Revised	EMB	BS			
A	12-3-93	Submittal Update	EMB	BS			