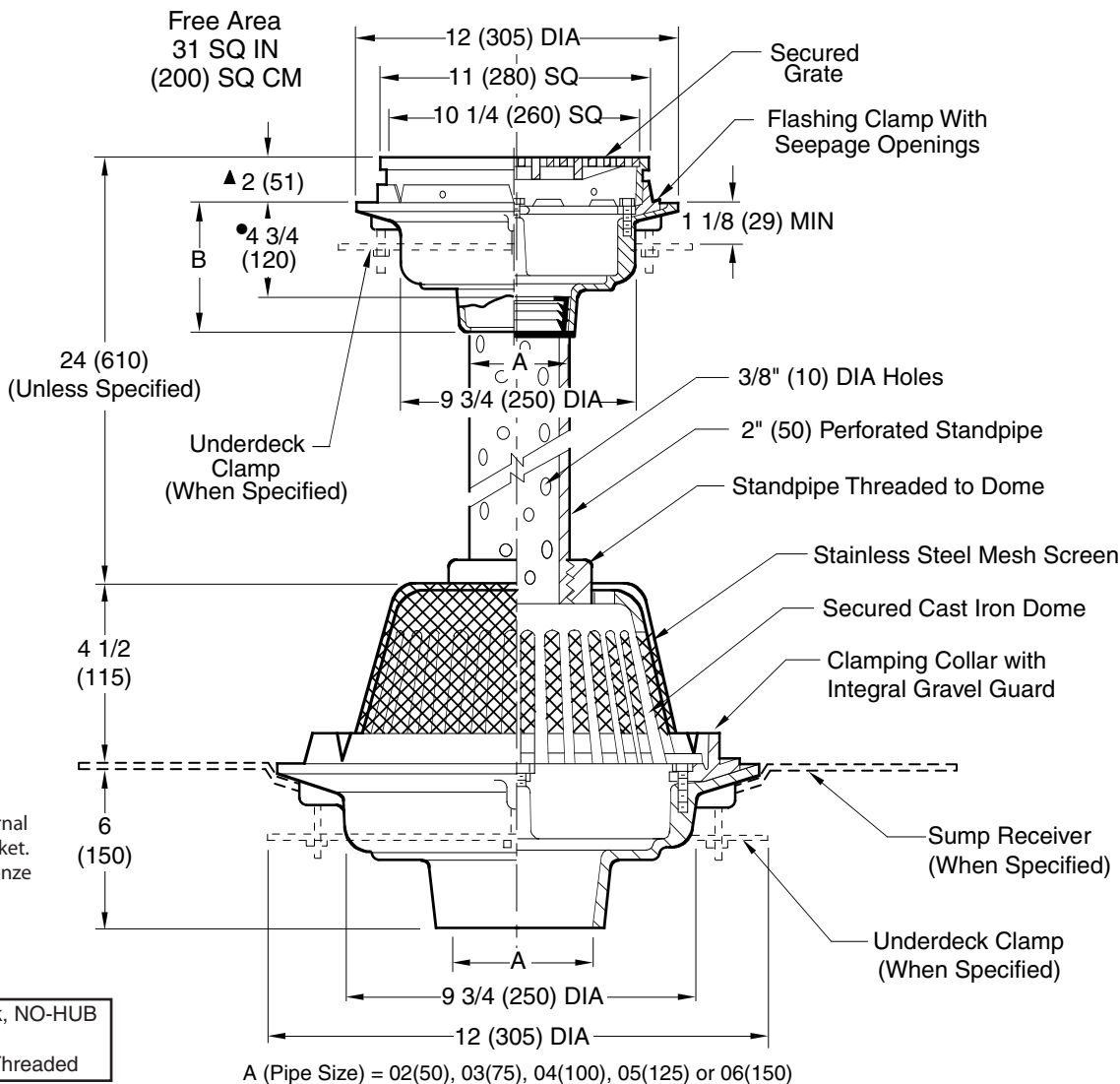




LOCATION

# PLAZA AND PLANTER DRAIN



- This Dimension to Internal Stop of Speedi-Set Gasket.
- ▲ Add 3/16" (5) when bronze top is specified.

B	6(150) for Caulk, NO-HUB and Speedi-Set 4 3/4 (120) for Threaded
---	---

Fig. 1920Y ... NO-HUB Outlet  
 Fig. 1920C ... Caulk Outlet

**REGULARLY FURNISHED:**

Upper Body Duco Cast Iron Promenade Deck Drain with Flashing Clamp, Seepage Openings and Secured Square Hole Light Duty Grate. Duco Cast Iron Lower Body with Combined Flashing Clamp and Gravel Stop with Dome Covered with Stainless Steel Mesh Screen. Upper and Lower Body assemblies Secured to Perforated Bronze Standpipe.

**VARIATIONS:**

- Sump Receiver -R
- Underdeck Clamp -C
- Vandal Proof Grate -U
- L Speedi-Set Service Weight 02"(50), 03"(75) & 04"(100) sizes only (Fig. 1450 only)
- LXH Speedi-Set Extra Heavy 02"(50), 03"(75) & 04"(100) sizes only (Fig. 1450 only)
- Secondary Flashing Clamp -C2
- T Threaded Outlet

**OPTIONS:**

- Upper Drain as Specified.
- Stainless Steel Mesh Screen over Perforated Standpipe.
- PVC Standpipe
- Ductile Iron Grate -M
- Galvanized Cast Iron -G
- Nickel Bronze Top -NB
- Polished Bronze Top -PB

**NOTE:** Dimensions shown in parentheses are in millimeters.

DRAWING NUMBER  
S1920

SIZE  
A

SCALE:  
NONE

DATE:  
1-24-07

APPROVED BY:  
AM

CHECKED BY:  
AM

DRAWN BY:  
RN

1920

DIMENSIONS ARE SUBJECT TO MANUFACTURERS TOLERANCE AND CHANGE WITHOUT NOTICE

REV.	DATE	DESCRIPTION	BY	CKD. BY
C	04/19/10	Added 24 unless specified	JJ	TK
B	03/25/10	Removed SQ note	JJ	TK
A	10/30/09	Renamed as 1920	JJ	TK

WEIGHT POUNDS	VOLUME CUBIC FEET	FIGURE NUMBER <b>1920</b>
---------------	-------------------	------------------------------