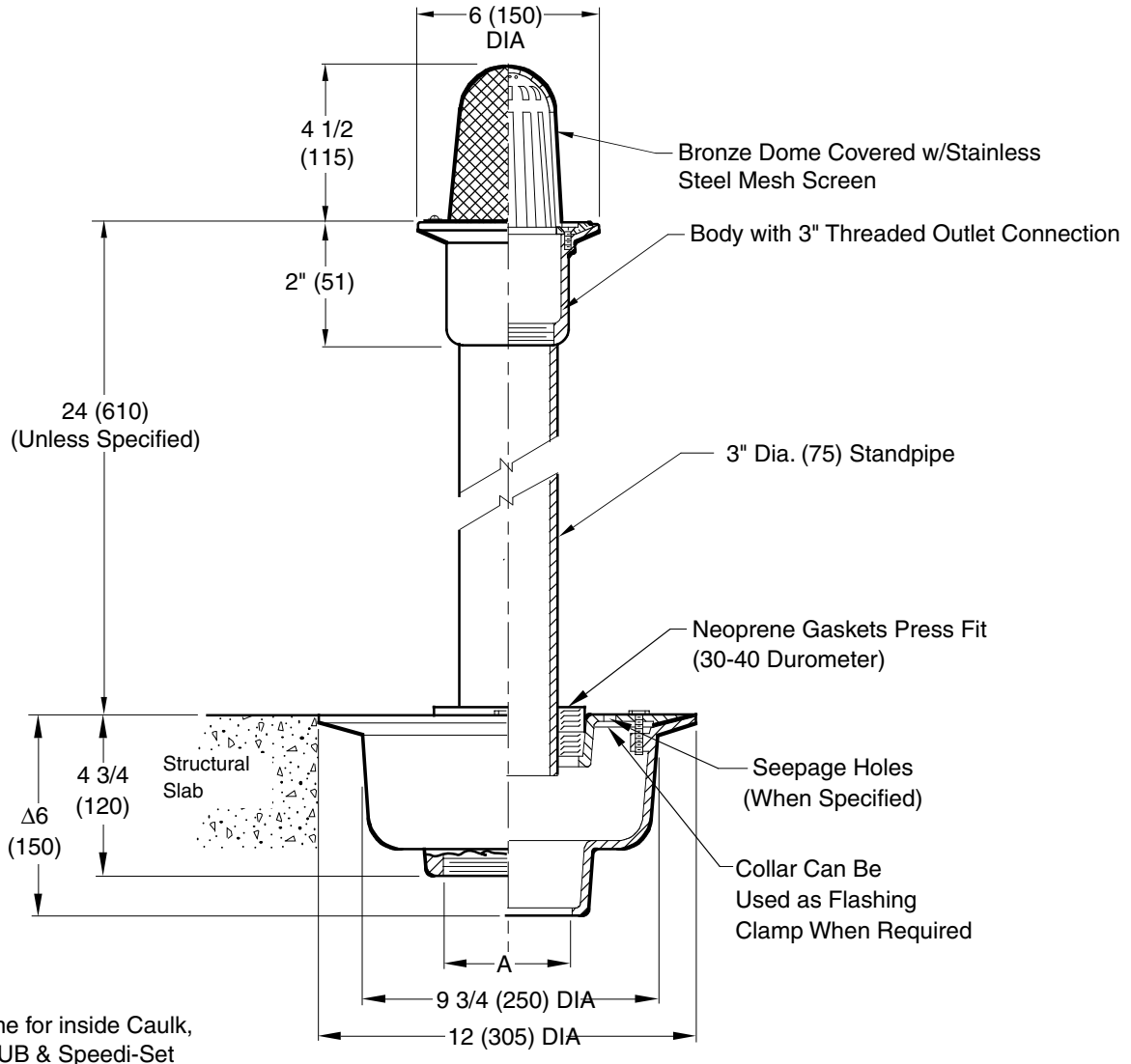




MEMBER OF:

LOCATION

ROOFTOP PLANTING AREA DRAIN



Δ Same for inside Caulk, NO-HUB & Speedi-Set

A (Pipe Size) = 02(50), 03(75), 04(100), 05(125) or 06(150)

Fig. 1906 . . . NO-HUB Outlet
 (Threaded or Inside Caulk Outlet)
 When Specified

REGULARLY FURNISHED:

Duco Cast Iron Upper Body with Bronze Flashing Clamp, Secured Bronze Dome with Stainless Steel Mesh Screen.
 Duco Cast Iron Lower Body with Combined Flashing Clamp, Adjustment Bronze Standpipe and Neoprene Isolation Gasket.

VARIATIONS:

- Sump Receiver -R
- Underdeck Clamp -C
- Vandal Proof Dome -U
- Perforated Standpipe

OPTIONS:

- Cast Iron Standpipe
- Galvanized - G

NOTE: Dimensions shown in parentheses are in millimeters.

DRAWING NUMBER
S1906

SIZE
A

SCALE:
NONE

DATE:
3-10-05

APPROVED BY:
AM

CHECKED BY:
AM

DRAWN BY:
RN

1906

FIGURE NUMBER

WE CAN ASSUME NO RESPONSIBILITY FOR USE OF SUPERSEDED OR VOID DATA

DIMENSIONS ARE SUBJECT TO MANUFACTURERS TOLERANCE AND CHANGE WITHOUT NOTICE

D	04/19/10	Added 24 unless specified	JJ	TK	WEIGHT POUNDS	VOLUME CUBIC FEET	FIGURE NUMBER 1906
C	4-1-2010	Revised 2" to 3" Standpipe	RN	AM			
B	03/25/10	Removed SQ note	JJ	TK			
A	10/30/09	Renamed as 1906	JJ	TK			
REV.	DATE	DESCRIPTION	BY	CKD. BY			