



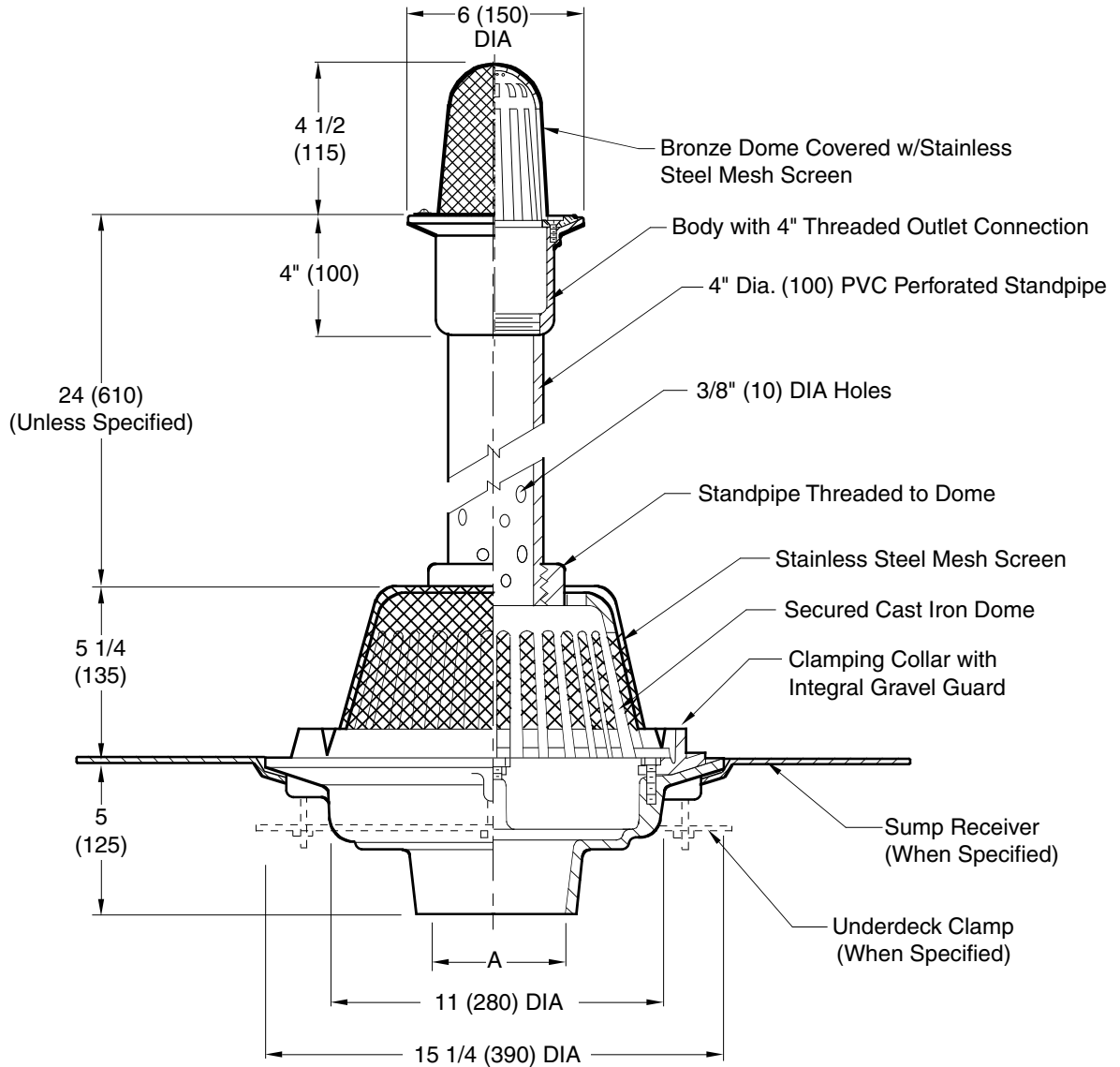
JAY R. SMITH MFG. CO.®
 DIVISION OF SMITH INDUSTRIES, INC.
 POST OFFICE BOX 3237
 MONTGOMERY, ALABAMA 36109-0237 (USA)
 TEL: 334-277-8520 FAX: 334-272-7396 www.jrsmith.com



MEMBER OF:

LOCATION

MULTI-LEVEL PLANTING AREA DRAIN



A (Pipe Size) = 02(50), 03(75), 04(100), 05(125) or 06(150)

Fig. 1905 . . . NO-HUB Outlet
 (Threaded or Inside Caulk Outlet)
 When Specified

REGULARLY FURNISHED:

Duco Cast Iron Upper Body with Bronze Flashing Clamp, Secured Bronze Dome with Stainless Steel Mesh Screen.
 Duco Cast Iron Lower Body with Combined Flashing Clamp and Gravel Stop with Cast Iron Dome Covered with Stainless Steel Mesh Screen with Dome Modified to Accept PVC Threaded Standpipe, Height as Required.

VARIATIONS:

- Sump Receiver -R
- Underdeck Clamp -C
- Vandal Proof Dome -U

OPTIONS:

- Upper Drain as Specified.
- Stainless Steel Mesh Screen over Perforated Standpipe.

NOTE: Dimensions shown in parentheses are in millimeters.

DRAWING NUMBER
s1905

SIZE
A

SCALE:
NONE

DATE:
10-24-02

APPROVED BY:
BW

CHECKED BY:
ECW

DRAWN BY:
RN

1905

WE CAN ASSUME NO RESPONSIBILITY FOR USE OF SUPERSEDED OR VOID DATA

DIMENSIONS ARE SUBJECT TO MANUFACTURERS TOLERANCE AND CHANGE WITHOUT NOTICE

REV.	DATE	DESCRIPTION	BY	CKD. BY
C	04/19/10	Added 24 unless specified	JJ	TK
B	03/25/10	Removed SQ note	JJ	TK
A	10/29/09	Renamed as 1905	JJ	TK

WEIGHT POUNDS	VOLUME CUBIC FEET

FIGURE NUMBER 1905
