

B



JAY R. SMITH MFG. CO.
 DIVISION OF SMITH INDUSTRIES, INC.
 POST OFFICE BOX 3237
 MONTGOMERY, ALABAMA 36109-0237 (USA)
 TEL: 334-277-8520 FAX: 334-272-7396 www.jrsmith.com



LOCATION

ROOF ACCESSORY

RISER SLEEVE ADAPTOR

FUNCTION: Used as an adaptor type riser sleeve. Length of sleeve may be extended by inserting pipe nipples in either end of sleeve. Integral flashing flange is provided for use in waterproofed floors.

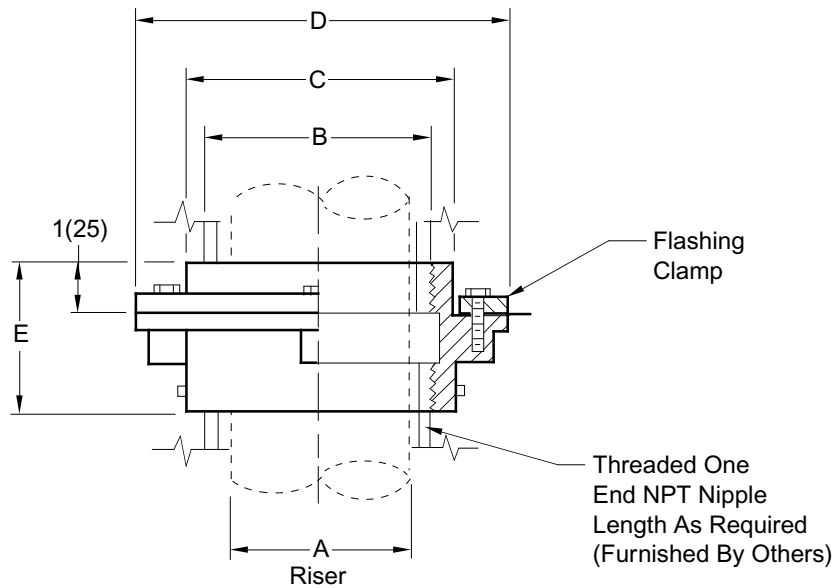


Fig. 1760T

A=RISER	0150(40)	02(50)	0250(65)	03(75)	04(100)	05(125)	06(150)
B=SIZE	2 1/2(64)	3(76)	4(100)	4(100)	5(125)	6(150)	8(205)
C=DIA	4(100)	4(100)	5(125)	5(125)	6 1/2(165)	7 1/2(190)	10(255)
D=DIA	6 1/2(165)	6 1/2(165)	7 1/4(185)	7 1/4(185)	9 1/4(235)	10 1/4(260)	13 1/2(345)
E	3(76)	3(76)	3(76)	3(76)	3 1/2(89)	3 3/4(95)	4(100)

ALWAYS SPECIFY (A - RISER) SIZE

REGULARLY FURNISHED:
 Duco Cast Iron Body with Flashing Clamp.

OPTIONAL MATERIALS:
 Galvanized Cast Iron -G

NOTE: Dimensions shown in parentheses are in millimeters.

DRAWING NUMBER
S1760

SIZE
A

SCALE:
NONE

DATE:
5-24-85

APPROVED BY:
TD

CHECKED BY:
TD

DRAWN BY:
CR

1760

FIGURE NUMBER

B	6-16-99	Added Millimeters	CMD	BS	WEIGHT	VOLUME	FIGURE NUMBER
A	7-1-94	Submittal Update	EMB	BS	POUNDS	CUBIC FEET	1760
REV.	DATE	DESCRIPTION	BY	CKD. BY			

WE CAN ASSUME NO RESPONSIBILITY FOR USE OF SUPERSEDED OR VOID DATA

DIMENSIONS ARE SUBJECT TO MANUFACTURERS TOLERANCE AND CHANGE WITHOUT NOTICE