

ROOF ACCESSORY

CAULKING TYPE ROOF COUPLING

FUNCTION: Used as a counterflashing sleeve where roofing membranes are terminated at the stack, which protrudes through the roof. Caulk joint is made between upper hub of sleeve and stack, effectively waterproofing the entire assembly.

DRAWING NUMBER **S1740**
 SIZE **A**
 SCALE: **NONE**
 DATE: **5-24-85**
 APPROVED BY: **TD**
 CHECKED BY: **TD**
 DRAWN BY: **PL**
 DIMENSIONS ARE SUBJECT TO MANUFACTURERS TOLERANCE AND CHANGE WITHOUT NOTICE

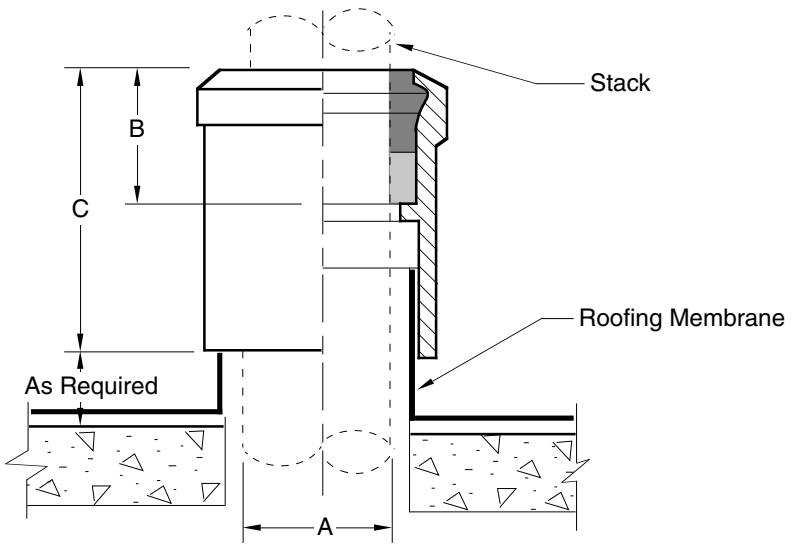


Fig. 1740C

A SIZE	"B"	"C"
02(50) & 04(100)	1 3/4(44)	3 1/2(89)
03(75), 05(125) & 06(150)	1 3/4(44)	3 3/4(95)
08(200)	2 1/4(57)	4 1/4(110)

NOTE: Dimensions shown in parentheses are in millimeters.

REGULARLY FURNISHED: Duco Cast Iron.

OPTIONAL MATERIALS: Galvanized Cast Iron -G

1740

FIGURE NUMBER	B	6-16-99	Added Millimeters	CMD	BS	WEIGHT POUNDS	VOLUME CUBIC FEET	FIGURE NUMBER
	A	6-30-94	Submittal Update	EMB	BS			1740
	REV.	DATE	DESCRIPTION	BY	CKD. BY			