

B



JAY R. SMITH MFG. CO.
 DIVISION OF SMITH INDUSTRIES, INC.
 POST OFFICE BOX 3237
 MONTGOMERY, ALABAMA 36109-0237 (USA)
 TEL: 334-277-8520 FAX: 334-272-7396 www.jrsmith.com



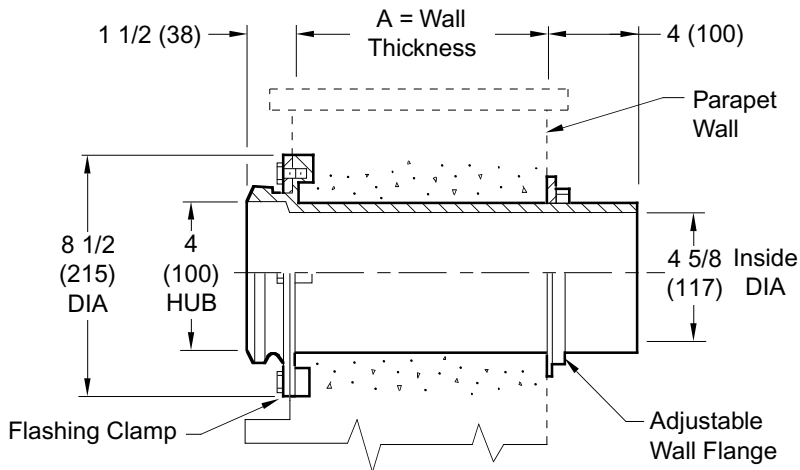
MEMBER OF:

LOCATION

ROOF ACCESSORY

PARAPET SLEEVE

FUNCTION: Serves as scupper drain allowing drainage through parapet wall. Sleeve may be flashed at parapet wall and is held firmly in place by the adjustable wall flange.



A = -0850(215), -0950(240), -1350(345), -1750(445) or -2250(570)
 (Please Specify)

Fig. 1730

NOTE: Dimensions shown in parentheses are in millimeters.

REGULARLY FURNISHED:
 Duco Cast Iron Body with Flashing
 Clamp and Adjustable Wall Flange.

OPTIONAL MATERIALS:
 Galvanized Cast Iron-G

DRAWING NUMBER
S1730

SIZE
A

SCALE:
NONE

DATE:
5-24-85

APPROVED BY:
TD

CHECKED BY:
TD

DRAWN BY:
PL

WE CAN ASSUME NO RESPONSIBILITY FOR USE OF SUPERSEDED OR VOID DATA
DIMENSIONS ARE SUBJECT TO MANUFACTURERS TOLERANCE AND CHANGE WITHOUT NOTICE

1730

FIGURE
NUMBER

B A	4-7-97 6-15-93	Added Millimeters Submittal Update	EMB EMB	BS BS
REV.	DATE	DESCRIPTION	BY	CKD. BY

WEIGHT
POUNDS

VOLUME
CUBIC FEET

FIGURE NUMBER

1730