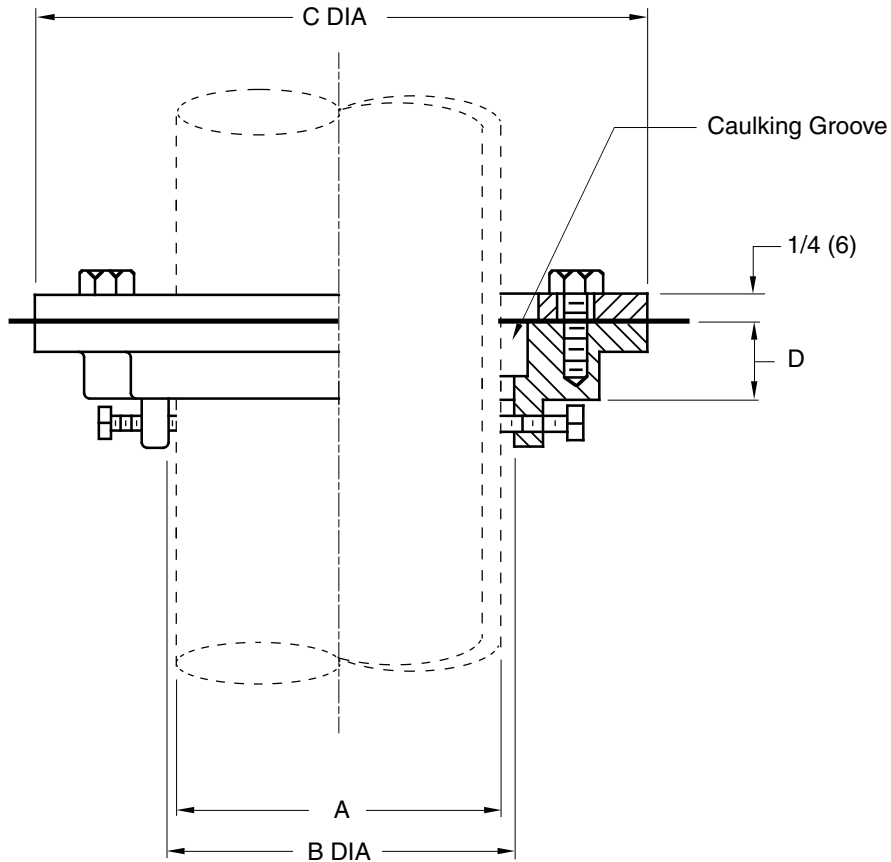


ADJUSTABLE FLASHING DEVICE

FUNCTION: An adjustable flashing flange which can be set at variable depths to accommodate waterproofing material.



| A PIPE SIZE | B DIA | C DIA | D |
|----------------|---------------|---------------|-------------|
| 02 (50) | 2 9/16 (65) | 5 9/16 (141) | 3/4 (19) |
| 03 (75) | 3 11/16 (94) | 6 1/2 (165) | 3/4 (19) |
| 04 (100) | 4 11/16 (119) | 7 1/4 (185) | 3/4 (19) |
| 05 (125) | 5 3/4 (145) | 8 1/4 (210) | 3/4 (19) |
| 06 (150) | 6 3/4 (170) | 10 5/16 (262) | 2 9/16 (65) |
| 08 (200) | 8 7/8 (225) | 13 (330) | 3 (76) |

REGULARLY FURNISHED:
 Duco Cast Iron Adjustable Flashing Flange and Clamping Device.

NOTE: Dimensions shown in parentheses are in millimeters.

DRAWING NUMBER: S1725-1
 SIZE: A
 SCALE: NONE
 DATE: 4-6-72
 APPROVED BY:
 CHECKED BY: W.Z.
 DRAWN BY: R.K.
 FIGURE NUMBER: 1725-1

WE CAN ASSUME NO RESPONSIBILITY FOR USE OF SUPERSEDED OR VOID DATA
 DIMENSIONS ARE SUBJECT TO MANUFACTURERS TOLERANCE AND CHANGE WITHOUT NOTICE

| | | | | | | | |
|------|------|-------------|----|---------|---------------|-------------------|---------------|
| REV. | DATE | DESCRIPTION | BY | CKD. BY | WEIGHT POUNDS | VOLUME CUBIC FEET | FIGURE NUMBER |
| | | | | | | | 1725-1 |