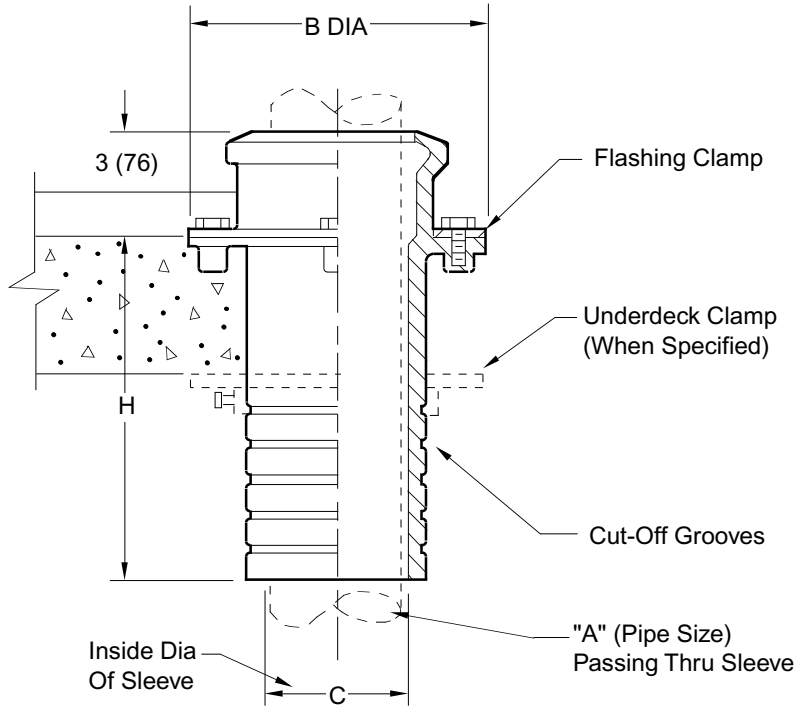


ROOF ACCESSORY

STACK OR WALL SLEEVE

FUNCTION: Used as a watertight sleeve for piping which passes through concrete floors and walls. Sleeve has integral cast flashing flange for use in waterproof floors. After riser is passed through sleeve, a waterproof caulked joint is made at the top hub. This prevents any water leakage along the riser from one floor to another.



NOTE: Dimensions shown in parentheses are in millimeters.

Fig. 1720SH
 H=-5(125), -10(255) or -14"(355)
 (Specify Height)

A SIZE	050 (15)	0125 (30)	0250 (65)	04 (100)	05 (125)	06 (150)	08 (200)	10 (255)	12 (305)
Δ	075 (20)	0150 (40)	03 (75)						
B DIA	5 (125)	6 3/4 (170)	7 1/2 (190)	8 1/2 (215)	9 1/2 (240)	10 1/2 (265)	13 1/2 (345)	15 1/2 (395)	19 (485)
C DIA	1 1/2 (38)	2 3/4 (70)	3 3/4 (95)	4 3/4 (120)	5 3/4 (145)	6 3/4 (170)	9 (230)	11 1/4(285)	13 1/4 (335)

Δ A nominal size for standard XH soil pipe or schedule 40 steel pipe.

REGULARLY FURNISHED:
 Duco Cast Iron Body with Flashing Clamp.

VARIATIONS:
 Underdeck Clamp -C

OPTIONAL MATERIALS:
 Galvanized Cast Iron -G

DRAWING NUMBER S1720
 SIZE A
 SCALE: NONE
 DATE: 5-24-85
 APPROVED BY: TD
 CHECKED BY: TD
 DRAWN BY: CR
 1720
 DIMENSIONS ARE SUBJECT TO MANUFACTURERS TOLERANCE AND CHANGE WITHOUT NOTICE

WE CAN ASSUME NO RESPONSIBILITY FOR USE OF SUPERSEDED OR VOID DATA

REV.	DATE	DESCRIPTION	BY	CKD. BY	WEIGHT POUNDS	VOLUME CUBIC FEET	FIGURE NUMBER
	6-16-99	Revised Millimeters	CMD	BS			1720
	4-7-97	Added Millimeters	EMB	BS			
	6-15-93	Submittal Update	EMB	BS			